



Weekly Newsletter

29 July 2015

Kia mau ki to Maoritanga = Hold fast to your culture

Term 3 - Issue 2

Important Dates

Thursday 30 July	FUNdraisers Meeting - 7:00pm in the Whare Iti
Wednesday 5 August	Reports and Goal Sheets come home
Thursday 6 August	BOT Meeting—7:00pm in the Staffroom
Thursday 27 August	Whanau Meeting
Tuesday 1 September	Artsplash—12 noon Practice 7.45pm Show
Thursday 3 September	FUNdraisers Meeting 7:pm Whare Iti
Thursday 10 September	BOT Meeting 7:pm Staffroom
Thursday 24 September	School Production Dress Rehearsal & Evening Show

From The Principal's Desk



Kia ora, Nameste, Talofa, Konnichiwa, Guten Tag, Gidday, Vannakkam, ni Hao, Kia orana, Hola, Salam, Sa wat dee kha, Dia Dhuit, Goeie Dag, Bonjour, Hello, (please let us know the greeting in your language if it is not here)
NZSL

This week is Māori Language week. The theme for the year **Kei Roto i te Whare - Māori Language in the Home** is being promoted and celebrated nationwide. Every week is Maori language week at Bellevue School as we honour the bi-cultural heritage of our country. We encourage you to help us use te reo at school and also to have a try at using or keep using te reo Māori in your home as well. We have a small number of booklets from Te Puni Kokiri that may support you with this. If you would like a booklet please contact the office. A barrier for many of us to overcome is whakamā (feeling shy or embarrassed) which is a natural feeling when trying something new or learning new skills. Ask your child/ren to help you as they are a great source of support and knowledge. They could teach you te reo words, songs and phrases they are learning at school as a family activity. Kia kaha koutou.

Assembly Dates

Friday 7 August	Rooms 10 & 15
Friday 21 August	Rooms 13 & 5
Friday 4 September	Rooms 12 & 1

A reminder that your child's report or goal sheet (for the Year 1 - 3 students not due their anniversary report) is coming home with the newsletter next week.

How is the Basic-Facts-a-Thon practice going at your house? Has your child been practising every day? Have they mastered their list yet? Have they secured some sponsors to reward their efforts when the big challenge day arrives next Friday?



We hope that you have a great week practising Basic Facts with your child/ren and trying out some of the te reo they have been learning too.



Ka kite
Karen

Welcome

Haere mai ki te kura o Bellevue

Welcome to Riley Crerar, Mana Maora & Kaitlyn Smith to Room 4 and Sami Laulau to Room 1.

A special welcome to the Bellevue School learning community to you and to your whānau/families.



Character Education



This term's value of **whakaute** or **respect** is focused on the attitude of caring about other people and their rights, showing consideration for others and being as concerned about them as we are about ourselves. Everyone deserves respect!

Showing respect helps keep order in families, organisations and societies. Recognising authority given to others and acknowledging the wisdom of others demonstrates whakaute. Respect enhances positive relationships, helps encourage self respect (an essential for personal well-being) and builds mutual respect that enables us to use our differences and strengths, rather than focus on weaknesses.

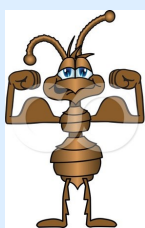
Kupu Hou (new word)

Whakamā = shy, bashful, embarrassed

Pronunciation = far-ka-mah

Māia = brave, bold, confident

Pronunciation = mah-ee-ah



Thank you

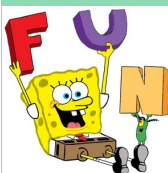
Special thanks to ...

Shona, Sarah and Jennifer for organising and cooking the sausages last Friday. We really appreciate your help each week.



FUNdraisers Meeting

We look forward to you coming along to the FUNdraisers meeting tomorrow evening at 7:00—8:00pm in the Whare Iti.



Please bring a friend and come along for a cuppa and biscuit as we work together to provide some fun events and activities that also raise funds to provide extra educational opportunities and equipment for all the students at Bellevue School

Cash or Kete - Adult Fun

On Friday 20 November the school is holding the second 'Cash or Kete' fun evening for adults. Our first one was in November 2014.



Please chat to people who attended last year to see how much fun this was. As well as raising funds for our students most of us went home with

one or more prizes... so please put the evening of the 20 November in your diary now, and ask along your friends, family and neighbours to this great night.

The FUNdraisers are currently collecting prizes for this great event. It may be an item you have at home eg: a picnic set you have never used, or a service you can offer eg: an hour's gardening, or something you can secure from another source eg: makeup donated from a sales-person.



PLEASE HELP US MAKE THIS ANOTHER GREAT EVENT FOR BELLEVUE SCHOOL

Basic Facts-a-thon

The Basic Facts-a-Thon testing will be at the end of next week, **Friday 7 August!**

We hope you are getting your children to practise their Basic Facts-a-Thon list every night using the Basic Fact-a-Thon Challenge sheet that was included in the packs that were sent home last term.

Also we hope that you and your child are managing to gather plenty of sponsors and recording their names on the sponsorship card. All funds raised will be used to improve our learning environment outside.

If you have not yet seen the Basic Facts-a-Thon pack please check in your child's book bag or check with their teacher.

If you have any particular questions please talk to your child's teacher or contact Margaret Hesketh margaret@bellevue-newlands.school.nz



We hope that you support this fundraising initiative as it supports your child's learning and raises much needed funds for the school.

Tiered Seating/stage

Help we need some tiered seating or staging for our production at the end of this term.

We are keen to have all our students seated on stage throughout the performance so you can see as much of your young stars as possible.



If you know of anywhere we might access this or anyone who might help us to locate this, please contact Karen, Michele or Amanda in the office as soon as possible.

Thanks

Term 3 Sausage Orders



If your child wants to order a sausage for Friday Lunch, please look on the website for the order form, then send this with the exact change to school **by 10:00am on Thursday 30 July (tomorrow)** to receive the sausage lunch for this Friday (31 July)

Please... if you can offer an hour of your time on Thursday morning to process the orders or a Friday lunchtime to cook or help distribute the sausages, this would be much appreciated.

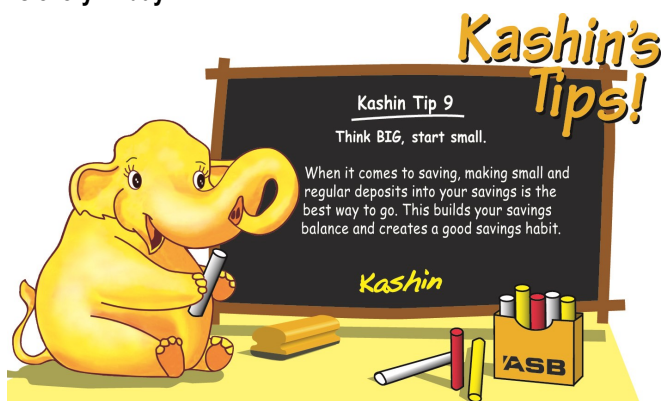
Contact Mandy or Shona on mackays.nz@gmail.com if you can help.



ASB School Banking

If you would like your child/ren to take part in the school banking programme pop into the school office and pick up an application form.

Once an ASB account is established your child will receive an exciting ASB banking pack and deposit envelopes. When your child has money to bank they put their envelope into the drop box which is located in the school office. Banking day is every Friday.



Scholastic Bookclub

Scholastic bookclub brochures were given out to all classes last Friday. All orders are due back to school by Thursday 6 August.

Please get your orders in on time as we are unable to process late orders. All orders need to be handed into the classroom so that they are written in the classroom finance book.



If you are paying by cheque, make it out to Scholastic NZ.

Intermediate Open Evening

This is being held on **Wednesday 5 August from 7.00pm - 8.15pm**. This is a student lead event and an opportunity for 2016 students and their families to look around the school and hear about teaching and learning at the Intermediate.

A **Literacy Information Evening** is also being held at the Intermediate on **Monday 17 August from 6: - 7:30pm**.

The Entertainment Book

Final days to purchase your Entertainment Book from the office or online at www.entbook.co.nz/1g04109.

We have currently made \$577 for the school, and have 14 books left for sale.

Last day for purchase is Friday 14 August.



Collecting Children

When collecting your child as they arrive back at school from a trip at the end of the day... please, please check in with your child's teacher before you take them home.

It is really important for the safety of all our children that the teacher knows your child has made it back into the school grounds, and they can check that your child leaves with their parents or approved adult.

If the bus is running late, we still require your child to come into the grounds with their class and then they will be released to you by their class teacher. We understand that this may inconvenience some people at times - especially if they have after-school lessons or other commitments they are eager to get to. However we will be insisting that every child is released from their class teacher.



We appreciate your assistance with this important safety procedure.



Bellevue Netball

Netball Results from Saturday 25 July:

Bellevue Pulse Year 4 won 7 -2
Bellevue Emeralds Year 5 lost 8 -12
Bellevue Pulse Year 6 lost 4 -17



Netball Draw for Saturday 1 August:

Bellevue Pulse Year 4 V Khandallah Stars
College 5 at 11.40am
Bellevue Emeralds Year 5 V QMC Kikorangi Int 1 at 9.10am
Bellevue Pulse Year 6 V St Bens Magic Saints 1 at 11.00am

Our Wonderful School

Neil Booth will be in school on Tuesday 4 August and is keen to talk with parents about Bellevue School. Neil is the Principal Appraiser who collects information that helps us to improve what we do. If you can spend a few minutes with him as you drop off your child that morning, he would love to speak with you.

As it is often cooler in the mornings these days, Neil will be in the library from 8:30am. Please come in to chat with him about our wonderful school — we are interested in what is working or not working



Adult Toilets at School

Just a little reminder that as an adult if you should need to use the toilet at school, please come into the office area to use the adult toilets.

Student toilets are **NOT** used by adults.

School Production

Our whole school bi-annual production is on the evening of 24 September.

Every student at Bellevue School will be part of this school production, so please diary the date now. You will not want to miss this amazing show that is written and performed by your talented children.



Peer Mediators

Hooray - our wonderful group of Peer Mediators have started to do duty at lunchtimes from this week. You may see them in their new bright green/yellow fluoro caps and vests.

Our mediators undertake a rigorous ten week training programme and need to prove their competency in mediation before they graduate. All of our current mediators have another few weeks until graduation so are training 'on the job'.

Our aim is to have these wonderful students in the playground to support other students with a problem solving process. They are a team of peacemakers in the school. As such they are available for children to ask for help or they may approach students to offer assistance if they see that there is a problem in the playground.

Our Peer Mediators reduce student



conflicts at recess and on campus!

Next week it is national PEACE WEEK. Our mediators have already started promoting peaceful relationships and problem solving in playground. They will be promoting PEACE WEEK in the school ...and working to help make every week a peaceful one in the playground!

Yummy Apples

Keep collecting all those Yummy 'Cut-out' labels from bags and the Yummy apple stickers on apples.



We still have until the end of term 3 to collect these so keep eating those apples!

The more stickers we collect, the more sports equipment we receive so please collect labels and stickers now!

If you need another copy of the sticker collection sheet let us know through the office. Any full sheets can be returned to the office.

Trips & Performances

As we are now in term 3, payment for trips and performances is due. Please make payment of \$10 for the term by sending cash along to the classroom money box in a named envelope with 'Term 3 trips' written on it, or by paying \$10 into the school account with your child's name, room number and term 3 Trip as references.

If you haven't paid for term 2 could you also do this as soon as possible as there are a number of trips coming up this term.

The school account is:
12-3223-0048283-00. Thanks



Bellevue School
Bancroft Terrace
Newlands 6037
Wellington

Phone: 04 478 7037
Fax: 04 477 3945
E-mail: principal@bellevue-newlands.school.nz

Bellevue School

e tipu e ako
where learning grows

We are on the web

www.bellevue-newlands.school.nz

Community Notices

Kids Cross Country Series 2015:

Event Dates:

Sunday 16 August -

Grenada North Park, off
Jamaica Drive, Tawa

Sunday 6 September -

From WHAC Clubrooms,
Mt Victoria, Wellington

For more information look at
the poster on the information
board in the school office or go
to www.athleticshub.co.nz or
email rama@athleticswellington.org.nz or
phone 027 3902735.



Youth Night at Tawa Pool

On Friday 31 July there is the first Youth Night at Tawa Pool.

This is aimed at kids 8 years and up (we can have kids under 8 but the parent would have to stay with them)

7-9pm

\$5 entry

DJ

Dancing

Inflatables

Sausage sizzle

Competitions and prizes



This is the first time for this event, so the better the turn out the more opportunity that they will continue once a term.

Author Visit-The Children's Bookshop

Stacey Gregg, author of The Princess & the Foal, The Island of Lost Horses and the Pony Club Series will be at The Children's Bookshop, Kilbirnie Plaza on Wednesday 5 August from 3:30pm - 4:00pm, to meet her readers and sign copies of her books. All welcome, no charge.



Tennis Tournaments in August

on Sundays for tennis players aged 5 - 12 years. There will be Red, Orange and Green stage round-robin format tournaments for each level. Beginners welcome. Play in one tournament or all three!!



Tournament Details:

Wellington Fun Tournament

Sunday, 16 August

Renouf Tennis Centre, Wellington

Hutt Valley Fun Tournament

Sunday, 23 August

Mitchell Park Tennis Centre, Lower Hutt

Tawa Fun Tournament

Sunday, 30 August

Tawa-Lyndhurst Tennis Club

All tournaments:

10:00am-12:00pm

Open to all players 5-12 years of age

\$20 entry fee* for each tournament or \$50 for all 3!

*\$15 multiple child discount for each player with 2 or more children in the same family.

There will be goodie bags for each player on the day.

Contact rdm@tenniscentral.co.nz regarding registration and entry forms.