



Weekly Newsletter

5 August 2015

Toi te kupu, toi te mana, toi te whenua = The permanence of the language, prestige and land.

Term 3 - Issue 3

Important Dates

Wednesday 5 August	Reports and Goal Sheets come home
Thursday 6 August	BOT Meeting—7:00pm in the Staffroom
Friday 7 August	Zealandia Trip for Rooms 1, 2,3,4, 5 and 6
Thursday 27 August	Whanau Meeting
Tuesday 1 September	Artsplash –12 noon Practice 7.45pm Show
Thursday 3 September	FUNdraisers Meeting 7:pm Whare Iti
Thursday 10 September	BOT Meeting 7:pm Staffroom
Thursday 24 September	School Production Dress Rehearsal & Evening Show

From The Principal's Desk



Kia ora, Nameste, Talofa, Konnichiwa, Guten Tag, Gidday, Vannakkam, ni Hao, Kia orana, Hola, Salam, Sa wat dee kha, Dia Dhuit, Goeie Dag, Bonjour, Hello, (please let us know the greeting in your language if it is not here)

Remember to look out for your child's report or goal sheet (for the Year 1 - 3 students not due their anniversary report) when they come home this afternoon. We hope you enjoy sharing this written summary of their progress, their current goals and some ideas to help at home. Please take a look at the attendance for your child or children for the first part of this year as regular, high attendance makes a positive impact on your child's learning.

Student attendance, along with effective teaching, has the greatest influence on student engagement and achievement. All students need to be present at school so they can take part in learning. We encourage all our students to be at school everyday, unless they are unwell.

Parents and Boards of Trustees are legally responsible to ensure that students regularly attend school. The Ministry of Education aim is for every child to be at school for at least 92% of the year. It is important to note that if your child has a percentage less than this it can affect their learning considerably. Students with high absenteeism are less likely to succeed in their learning. To put the percentage attendance rate on your child's report into perspective it is helpful to consider it in the long term. For example - looking at a 90% attendance rate continuing for a child's whole schooling, when this student finishes Year 10 at school they will only have attended for nine years ie: they will have missed one whole year of school! The concern is high levels of absenteeism or regular absences from school creates a difficulty for students re-engaging in their learning. So please take a look at your child's attendance rate to make sure that they are regularly attending school so that their learning is supported by being in class every day.

How is the Basic-Facts-a-Thon practice going at your house? Your child has only a few more days to keep practicing. Yes only a couple of days more to get any last minute sponsors and get ready for 'the big mathematics challenge'. Good luck for Basic-Facts-a-Thon challenge day everyone.

This week is national PEACE WEEK. We work hard to encourage students and adults to promote peaceful relationships and problem solving in our school and playground. Please help us to model this behaviour and help our students to work hard to do this too so that we can make every week a peaceful one at Bellevue School.



Welcome

Haere mai ki te kura o Bellevue

Welcome to Silas Stuart and Darsheel Mallireddy to Room 4.

A special welcome to the Bellevue School learning community to you and to your whānau/families.

Ka kite, Karen



Character Education



**Always
Love
and
Respect**

How are your discussions about this term's value of **whakaute** or **respect** going with your child/ren? We are encouraging everyone to think about how they would like others to treat them, and then treat other people with that same dignity. We also encourage everyone to express even their strongest feelings in a peaceful way. During peace week this is a good time to practise this.

When working with children we also talk to about them treating themselves in a respectful way. They are unique, special and deserve to feel valued by themselves and others.

Kupu Hou (new word)

whakaaio = peace

Pronunciation = far-kar-eye-or

Ko te kaupapa he whakaaio whenua

The theme was peace.



Thank you

Special thanks to ...

Shona, Sarah, Tracy and Jennifer for organising and cooking the sausages last Friday. We really appreciate your help each week.



The Students on Road Patrol and our Parent Supervisors who stand out in all weathers to make sure our children cross the road safely.

Cash or Kete - Adult Fun

Remember that Friday 20 November is our second 'Cash or Kete' fun evening for adults (the first was in November 2014).



Please chat to people who attended last year to see how much fun this was. As well as raising funds for our students most of us went home with one or more prizes... so please put the evening of the 20 November in your diary now, and ask along your friends, family and neighbours to this great night.

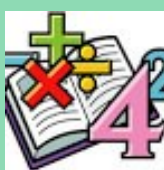
The FUNdraisers are currently collecting prizes for this great event. It may be an item you have at home eg: a picnic set you have never used, or a service you can offer eg: an hour's gardening, or something you can secure from another source eg: makeup donated from a sales-person.



PLEASE HELP US MAKE THIS ANOTHER GREAT EVENT FOR BELLEVUE SCHOOL

Basic Facts-a-thon

The testing of Basic Facts -a-thon lists will be completed **this Friday 7 August** for Te Hau Rawhiti (Junior Block) and Te Hau Tonga (Middle Block). Te Hau a Uru (Senior Block) students will be tested on **Monday 10 August**. Please make a special effort to encourage your child to get as many sponsors as they can over the next couple of days, and to practise the basic facts on their list.



It is important that all students return their plastic bag with their sponsorship card this **Friday** so teachers can record how many basic facts the students answered accurately on their card. This will be returned to them on Monday (Tuesday for Te Hau a Uru) so they can start collecting the money that their sponsors have pledged. When all the money has been collected, please return the money and sponsorship card in the sealed plastic bag provided. We would like all money returned by **Friday 14 August**.



Thank you for your on-going support of this fundraising event.

Road Patrol Supervision

This year we have had fantastic and dedicated parents supervise the Road Patrols before and after school. Sadly we have lost two parents who are unable to help us anymore so we need others to replace them.

It is a legal requirement for schools to always have an adult to stand with the Road Patrols when they are on duty. It is important that we make sure that our children always cross the road safely.

When: Mondays before or after school **OR;**

Thursdays before school **OR;**

Fridays before school.

Times: Mornings - 8:25am to 9:00am;
Afternoons - 2:55 – 3:15pm

What: We will support you and give instructions about what is expected of you.

Who: Any parent, grandparent or caregiver is welcome. Your child **DOES NOT** have to be a road patrol in order for you to volunteer for this.

The school needs your help! The more volunteers we have the better and safer for all our students.

Please email Margaret Hesketh at:
margaret@bellevue-newlands.school.nz

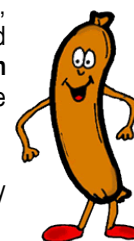
**CHILDREN
CROSSING**



Term 3 Sausage Orders

If your child wants to order a sausage for Friday Lunch, please look on the website for the order form, then send this with the exact change to school **by 10:00am on Thursday 6 August (tomorrow)** to receive the sausage lunch for this Friday (7 August).

Please... if you can offer an hour of your time on Thursday morning to process the orders or a Friday lunchtime to cook or help distribute the sausages, this would be much appreciated.

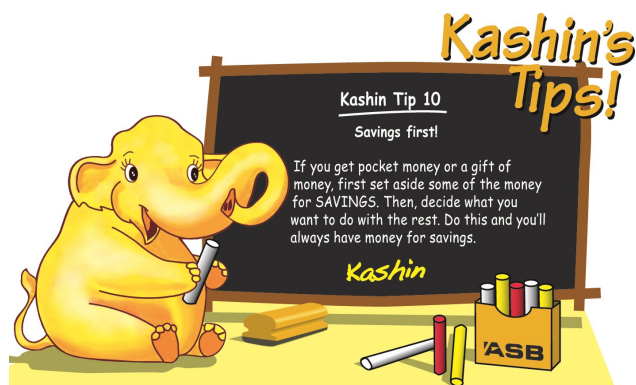


Contact Mandy or Shona on mackays.nz@gmail.com if you can help.

ASB School Banking

If you would like your child/ren to take part in the school banking programme pop into the school office and pick up an application form.

Once an ASB account is established your child will receive an exciting ASB banking pack and deposit envelopes. When your child has money to bank they put their envelope into the drop box which is located in the school office. Banking day is every Friday.



Scholastic Bookclub

All orders are due back to school tomorrow, Thursday 6 August.

Please get your orders in on time as we are unable to process late orders. All orders need to be handed into the classroom so that they are written in the classroom finance book.



If you are paying by cheque, make it out to Scholastic NZ.

Intermediate Open Evening

This is being held tonight - **Wednesday 5 August from 7.00pm - 8.15pm**. This is a student lead event and an opportunity for 2016 students and their families to look around the school and hear about teaching and learning at the Intermediate.

A **Literacy Information Evening** is also being held at the Intermediate on **Monday 17 August from 6: - 7:30pm**.

The Entertainment Book

Final days to purchase your Entertainment Book from the office or online at www.entbook.co.nz/1g04109.

**We have currently made \$577 for the school, and have 14 books left for sale.
Last day for purchase is Friday 14 August.**



Artsplash Tickets

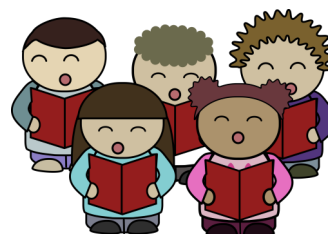


Bellevue High Notes are singing in Artsplash at the Michael Fowler Centre

September 1 2015 at 7.45pm

Tickets are \$5.00 each per person.

Tickets are available from the school office.



Bellevue Netball

Correction to last week's scores:

Bellevue Emeralds Year 5 won 12-8

Netball Results from Saturday 1 August:

Bellevue Pulse Year 4 won 7 -2

Bellevue Emeralds Year 5 lost 3 -14

Bellevue Pulse Year 6 lost 3 -19



Netball Draw for Saturday 8 August :

Bellevue Pulse Year 4 V Johnsonville

Jaguars College 6 at 11.40am

Bellevue Emeralds Year 5 V St Bens Superheroes

Intermediate 1 at 9.10am

Bellevue Pulse Year 6 V Ngaio Pulse College 1 at 11.00am

Good luck to all the teams and enjoy your netball.

The netball season is scheduled to finish on Saturday 29 August provided there are no more postponements.

Bellevue School Netball Prize Giving:

Our Prize Giving is on Wednesday 2 September. More details will be given closer to the time.

All teachers, parents, grandparents, caregivers, friends and family are welcome.

Congratulations to Mrs Needham

Congratulations on your new position Mrs Needham.



Philippa has just accepted a new position at Pukerua Bay School starting at the beginning of Term 4. This means she will be working closer to where she and her new husband are living. Although we are very sad to be saying goodbye to Philippa at the end of this term, we wish her all the best in her new school - and for the shorter travel time she will experience each day.

Please note that we will be planning a special farewell for Mrs Needham at the end of the term. We will also be looking for an equally wonderful teacher to take over in Room 6 for the beginning of Term 4. More details of these will come to you later in the term.

School Production



Our whole school bi-annual production is on during the last week of term ie: Thursday evening - 24 September.

Every student at Bellevue School will be part of this school production, so please diary the date now. You may have already heard a little from your child/ren about this event. Hearing about some of the children's ideas, believe me - it is one that you will not want to miss!

Bus Drop Off & Pick up

Please note that from this week all trips that use a bus to transport students to and from school will be using Link Road as an entry/exit point to the school.

When on school trips or EOTC (Education Outside the Classroom experiences) the buses will stop at the Link Road bus stop for everyone to board and disembark .

To ensure safety for everyone, all students, parent supervisors/helpers and staff travelling on the bus will leave the school via the gate and pathway that is alongside Bellevue Kindergarten.



Please Visit



There are some exciting things happening in our library. Please feel free to drop into the library to read with your children - especially if you arrive earlier than 8:30am in the morning and want somewhere a little warmer to wait until children can go to their rooms.



Yummy Apples

Keep collecting all those Yummy 'Cut-out' labels from bags and the Yummy apple stickers on apples.



We still have until the end of term 3 to collect these so keep eating those apples!

The more stickers we collect, the more sports equipment we receive so please collect labels and stickers now!

If you need another copy of the sticker collection sheet let us know through the office. Any full sheets can be returned to the office.

Trips & Performances

Payment for Term 3 trips and performances is \$10 for the term . Please send cash along to the classroom in a named envelope with 'Term 3 trips' written on it, or pay \$10 into the school account with your child's name, room number and term 3 Trip as references.

The school account is:

12-3223-0048283-00. Thanks

There are a number of trips coming up this term.



Bellevue School
Bancroft Terrace
Newlands 6037
Wellington

Phone: 04 478 7037
Fax: 04 477 3945
E-mail: principal@bellevue-newlands.school.nz

Bellevue School

e tipu e ako
where learning grows

We are on the web

www.bellevue-newlands.school.nz

Community Notices

Kids Cross Country Series 2015:

Event Dates:

The hugely successful Kids Cross Country Series is coming to Tawa on Sunday 16 August. These events are run around the Wellington region, with the local Olympic Harrier and Athletic Club hosting this event in partnership with Athletics Wellington. There are races for pre schoolers (Year 0s) through to year 8s. They're heaps of fun for the kids and if you register by this Sunday 9 August your child will receive a personalised race bib on the day that they get to keep as a memento of their day. Only \$7 per child to enter. Medals are awarded to those who finish in the top three, and there are certificates for team awards. With close to 600 taking part in each event so far this year it's an event not to be missed. If your child loves running give it a go. And you can find out about the local cross country club while you're there. For more details or to enter go to www.athleticshub.co.nz. If you have any questions phone Jo Murray at 021 976116 or email jo@athleticswellington.org.nz



Author Visit-The Children's Bookshop

Stacey Gregg, author of The Princess & the Foal, The Island of Lost Horses and the Pony Club Series will be at The Children's Bookshop, Kilbirnie Plaza on Wednesday 5 August from 3:30pm - 4:00pm, to meet her readers and sign copies of her books. All welcome, no charge.



Tennis Tournaments in August on Sundays for tennis players aged 5 - 12 years. There will be Red, Orange and Green stage round-robin format tournaments for each level. Beginners welcome. Play in one tournament or all three!!

Tournament Details:

Wellington Fun Tournament
Sunday, 16 August
Renouf Tennis Centre,
Wellington



Hutt Valley Fun Tournament
Sunday, 23 August
Mitchell Park Tennis Centre, Lower Hutt

Tawa Fun Tournament
Sunday, 30 August
Tawa-Lyndhurst Tennis Club

All tournaments:

10:00am-12:00pm

Open to all players 5-12 years of age
\$20 entry fee* for each tournament or \$50 for all 3!

*\$15 multiple child discount for each player with 2 or more children in the same family.

There will be goodie bags for each player on the day.

Contact rdm@tenniscentral.co.nz regarding registration and entry forms.

