



# Weekly Newsletter

4 November 2015

We work together for maximum impact = *Ka mahi ngātahi mā te tuinga nui tonu*

Term 4 - Issue 4

## Important Dates

Saturday 7 November	Christmas Craft Fair 11am-3pm in the School hall
Saturday 7 and Sunday 8 November	Family Portraits - 1-4pm in the staffroom
Friday 13 November	Year 6 Orientation to Newlands Intermediate
Friday 20 November	Cash or Kete (Adults Fun night) - 7pm
Thursday 26 November	Pack the Bus— visits Bellevue School
1 December	Year 5 Zoo Sleep-over
1 – 3 December	Year 6 School Camp
9 December	End of Year reports (years 4-6) and progress reports (years 1-3) for those due these
Wednesday 16 December	Final day of 2015 - Final assembly and 12 noon finish
Monday 1 February	First day of 2016 - 9:00am start

Please help us with the Bake Sale and Sausage Sizzle at the Craft Fair this Saturday. We need you



## Assembly Dates

Friday 13 November	Assembly - Te Puawai Amua & Choirs
Friday 27 November	Assembly led by Rooms 9 & 2
Wednesday 16 December	End of Year Presentations, Farewells and Singing

## Welcome

Haere mai ki te kura o Bellevue

We would like to welcome Madison Nguyen to Room 4.

A special welcome to our school learning community to you and to your whanau/family.

## From The Principal's Desk



Kia ora, Nameste, Talofa, Konnichiwa, Guten Tag, Gidday, Vannakkam, ni Hao, Kia orana, Hola, Salam, Sa wat dee kha, Dia Dhuit, Goeie Dag, Bonjour, Hello, (please let us know the greeting in your language if it is not here)

Thank you for supporting the school's Evacuation Practice Day on Friday. This enabled us to practice our emergency evacuation procedures in the school setting. Should any emergency occur our greatest concern is the safety of our students and staff, then re-unifying them with their families/whanau after the event. We appreciated everyone waiting to receive the text before coming to school on Friday. This enabled us to review our procedures in a more 'real' way. We also appreciated your patience as the children entered the hall before releasing staff to help you sign your children out. This enabled everyone the opportunity to experience and follow the re-unification process we will use following any emergency. Please let us know of any ideas you have that might improve what we do should there ever be an emergency that requires you to pick up your child following the event. Many thanks.

A number of students, parents and families have expressed their desire for a quick replacement of our junior school playground. Please be assured that the staff and Board are also very keen for this to occur. However we need your help. Please read the FUNdraisers newsletter accompanying today's newsletter as we need you to make these events a success. With \$20,000 already raised towards the \$100,000 playground we need each FUNdraiser to count. Please support this weekend's Craft Fair by donating some baking or some time to lend a hand to help at the Bake Sale and Sausage Sizzle. Your help is appreciated and money raised goes directly towards the playground. See you Saturday.

Ka kite  
Karen

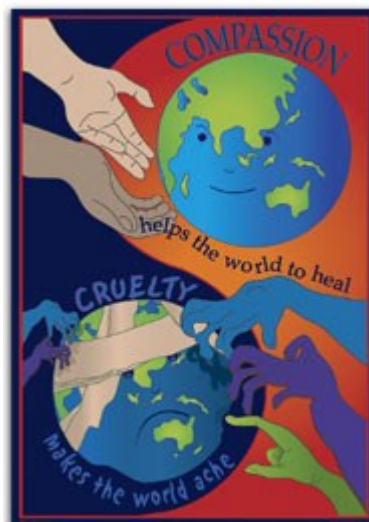


## Character Education

Empathy or compassion (aroha) helps us to be more caring, helpful and happy. This term we are focusing on looking out for and helping others in need - that is in our families, friendships, class, school and the community. We encourage everyone to do something practical for others (no matter how small) to build a little hope, provide encouragement and show others that they are not alone.

Acts of compassion have a two-way effect. Not only do they help the receiver, but they often have a powerful effect on the giver in bringing out the best in a person. According to the Dalai Lama ..  
"If you want others to be happy, practice compassion.  
If you want to be happy, practice compassion."

During this term we encourage our students to practice showing an interest in others, also to consider how they can show compassion/empathy for others through their attitudes and behaviour. We aim to help build young people who are compassionate to themselves but also interested in others (not just themselves) so they can contribute to a more caring world.



## Kupu Hou (new word)

**whai (whāia)**= to follow, to chase, to pursue  
pronunciation = f-eye (far-eh-ah)

E *whai* ana ngā tamariki i te pōro.  
The children are *chasing* the ball.

Kei te *whāia* te pōro e ngā tamariki.  
The ball is being *chased* by the children.

*Whāia* te mātauranga!  
*Pursue* education!



## Thank you

Special thanks to ...

Everyone for your participation and support during the whole school emergency evacuation. We appreciate the opportunity to check that everyone knows what to do should we ever need to evacuate the school.

Sarah Williamson who has come in to do some extra practices with some of the students going to the Athletics.

The wonderful people helping organise the Christmas Craft Fair this Saturday. Please offer to help with the Bake Sale and Sausage Sizzle as money raised goes directly towards our new junior school adventure playground.



## Congratulations

Congratulations to all the Year 5 and Year 6 students who recently prepared and then delivered some exciting speeches to their classmates as part of learning programmes in Rooms 12, 13 and 15.

The finalists from Year 5 were Allana, Ayla, Dmitry, Jade and Lamita, The finalists from Year 6 were Elijah, Isabella, Pisey and Trinity. Well done to you all for your courage and confidence in presenting your speeches.



Thank you to Ayla Duffy (Room 12) who will represent the school as our Year 5 candidate and Pisey Keat (Room 13) as our Year 6 candidate in the Newlands Schools Cluster Speech Evening this Wednesday. The speech evening starts at 6:00pm at Newlands Intermediate School.

## Cash or Kete - Adult Fun

There is only two and a half weeks until the fun adult 'Cash or Kete' evening. Get your friends, families, workmates, neighbours and acquaintances to come along to this great evening. This was a great success last year so come along and join us for a great evening.



Get your ticket now from the office - \$15 a person to come along for some laughs and to go home with some great prizes.

Included in the prizes are:-  
Make-up gift packs, a Breville Toastie Maker, \$100 florist voucher, AFL Pack, Avengers Batman pack,

bottles of wine, family tickets to the pantomime and the pool, recreation centre vouchers that include skate hire, shopping vouchers .... and more!!

This fun night is in the hall at 7:00pm on Friday 20 November. BYO cold drinks. Hot drinks and food is available to purchase at the event. There will also be some raffles and some auctions to tempt you so bring along some spare change to be in to win.

All profits go towards the upgrade of our school playgrounds.

## School Production - photos and video

Photos from "The Time Machine - Learning in 2015" are available from <http://davelintott.photoshelter.com/gallery/150924-Bellevue-School-Production/G00003AKfGiCq.5Y/C000070uH6FIZ72A>.

This is a private gallery, accessible by using the password - **bellevue2015**. This password allows free 1200px (longside) jpeg file download.

Full-size files are on sale for \$5:00 via Paypal interface on site (normal debit cards can be used), but the medium downloads should be fine for any normal use. There is a link to this on our school website.

Production videos can now be accessed through the school website. To view the videos go to: [www.bellevue-newlands.school.nz](http://www.bellevue-newlands.school.nz) and then click on:

- ◆ Our School
- ◆ School Information
- ◆ Production Videos
- ◆ Choose the Room/s you want to view
- ◆ Put in password - **bellevue2015**



A big thank you to Dave from 'Dave Lintott Photography' (Hilary's husband) who very kindly donated his time on Wednesday and Thursday to take these photos and a video of the show, also to put these on-line for you to access. Kia ora Dave. We really appreciate your expertise and generosity in doing this for us.

## Non-attendance/Holiday during term time

If you are taking your child/ren out of school during term time, we need to have written advice from you in advance letting us know where your child will be during their absence and how long they will be away from school, including the date of their return.

Please note that the law states that all children between the ages of 6 -16 years are legally required to attend school at all times that school is open for instruction.

At Bellevue School we expect that children enrolled at our school attend every day that the school is open for instruction. We work with students and their families to encourage full attendance at school as we are mindful that research shows a high correlation between absences and lower achievement for students. It may be helpful to consider if your child is away from school for five days each term (or one day a fortnight) they will miss the equivalent of one year of school over ten years - which means by the time they complete Year 10 they have only had nine years of schooling.

We appreciate that children get ill periodically but encourage you to make appointments outside school hours and to have your children attend school each day that it is open for instruction to support their learning.

## Sausage Orders

If your child wants to order a sausage for Friday, and you have not organised this for the whole term, please use the weekly order form available on our website. This needs to be sent with the exact change to school **by 10:00am on the Thursday** for lunch on **Friday**.



Please... if you can offer an hour of your time on Thursday morning to process the orders or on Friday to cook or help distribute the sausages, this would be much appreciated.

Contact Mandy or Shona on [mackays.nz@gmail.com](mailto:mackays.nz@gmail.com) if you can help.

## School T-Shirts



Bellevue School T-shirts can now be ordered from the school office. These are available in blue or green and in sizes 6 - 14 at a cost of \$20 each.

To view a sample of the T-Shirts, please take a look at them on display in the office foyer. Order yours now.

Order forms are available on line, or hard copy at the office.



## Pack the Bus



Student Council are joining with the City Mission and The Breeze to think of others less fortunate this Christmas.

This year the bus comes to Bellevue on Thursday 26 November so the Xmas tree will be in the foyer from next Thursday 12 November for you to put your gifts under. We are collecting new toys, games, books, board games, toiletries, vouchers art equipment and food items.

Please do not wrap items. If your child wants to put their item on the bus, attach their name and class number to these so that we can find this when the bus arrives. Please keep this in mind as another way that we can practise empathy, compassion and aroha this term. Posters are going up around the school this week to give you further details about this great initiative. Thanks to our wonderful student council and for supporting this.

## Newlands Intermediate Year 6 Visit

On Friday 13 November the year 6's are attending an Orientation morning at Newlands Intermediate. If your child is going to be attending Newlands Intermediate next year please complete their enrolment before the orientation visit.

Enrolment forms are available from Newlands Intermediate.



## Having Plenty to Drink

A message from the Regional Public Health Nurse:-

Children need plenty of water to keep their bodies working. They need to drink more when they are active and when it is hot. Children need lots of small drinks through the day. Keep offering drinks, as they may forget to drink when they are active and become dehydrated (ie: lose too much water) which can be serious for young children.

### Give more of these

- Water is best – it is cheap and easy to get. Keep a jug of cold water in the fridge.

- Milk is also a good drink for children because it contains energy, protein and many vitamins and minerals. Serve milk after meals or as part of a healthy snack between meals.

### Give less of these

- Fruit juice is not recommended as it is high in sugar, which can cause tooth decay. If using, dilute juice with water (at least 1/2 a cup of water to every 1/2 a cup of juice) and have it with a meal rather than on its own. This may help to protect teeth from the sugar.

- Soft drinks are high in sugar and sometimes contain caffeine.

### Don't give these

- Don't give tea or coffee to children. The caffeine in tea and coffee can affect children's sleep and cause dehydration. Other substances in tea and coffee can reduce the amount of iron children can absorb from food.

- Don't give energy drinks, energy shots or drinks containing guarana. They contain caffeine and many are high in sugar.

<http://www.health.govt.nz/our-work/preventative-healthwellness/nutrition/food-and-nutrition-guidelines>



## Family Portraits Fundraiser

FUNdraisers have organised 'Photos by Sarah' for family portraits at school on this weekend, 7 and 8 November from 1:00 - 4:00pm in the staffroom both days. Sessions take 10 minutes and cost \$10, which goes to the school. This is a great opportunity to get some fabulous colour and black and white family and individual photos. They make great Christmas presents and raise money towards our playground upgrade. Photo prices start at \$15 for a 5" x 7" photo. To make a booking please go to the website [www.schoolinterviews.co.nz](http://www.schoolinterviews.co.nz) and enter J8UNS then follow the directions. Once you have booked and pre-paid your \$10:00 session fee you will be sent information about the photos session by email.





## Weet-bix Kids TRYathlon



Bellevue are entering a team in the 2016 Kids Triathlon 2016.

This takes place at Kilbirnie Park, Wellington on 20 March 2016. Entry is \$39 per student.

The Weet-Bix Kids TRYathlon is for Kiwi kids of all sporting abilities who are aged between 7 and 15. Children can enter as individuals and do all three legs of the TRYathlon by themselves or in a team of two and do either the swim/run or bike/run with a friend.

If you are entering your child/ren outside of school you can link to Bellevue by using the code **BELL1012**

In the coming weeks a meeting will be held for students who are interested in this opportunity and more information and permission slips will be sent home.

If you have any questions, please email me on [deeann@bellevue-newlands.school.nz](mailto:deeann@bellevue-newlands.school.nz)

## Yummy Apple Stickers



A big thank you to all our families who collected the Yummy Apple stickers this year. We earned equipment a new parachute, some soccer and tennis balls which are on the way to us.

Please keep collecting the stickers for this promotion in 2016.

If you need a sheet to put the stickers on please pick one up from the office, or you can find this on our website in the Notices & Newsletters section. Thank you.



## Bell Challenge Event



Dear Students,

**Can you imagine a life without being able to see?**

There are more than 11,700 Kiwis who are blind or have low vision.

The Blind Foundation helps such people lead a more normal life.

Show your support for this amazing cause by joining the **Masquerade Day this Friday 6 November**. Wear a costume or a mask to show your support and bring along a gold coin to donate.

Aryan and Rohan Mani

## Christmas Craft Fair



**This Saturday 7 November** come along to a Craft Fair in our school hall.

If you (or anyone you know) would like to hold a stall contact Lorraine for details on:-

[bellevuefundraisers@gmail.com](mailto:bellevuefundraisers@gmail.com) or phone Lorraine on 027 600 4401. Also come along on the day to see what amazing crafts are for sale.

## Parking



Please be considerate to our neighbours by not parking in or across their drive or turning into driveways when you are dropping off or picking up your children from school. This seems to be more of a problem during bad weather. The last wet day, a concerned parent came in to say some of our children were almost run over when someone backed into a driveway to turn around.

Police advise you to record the registration number when you see this happening and report it to them. Thank you for looking out for the safety of our children, their families and our neighbours.



## Twilight Fair

At the beginning of next year we are holding a Twilight Fair so please diary 26 February 2015 from 4:00 - 8:00pm. Further information will come to you over the next few months, but start saving those books for the second hand book sale and start thinking of other stalls that would be of interest.



## A Printer in our Community?

The FUNdraising group is keen to see if there is a printer who is part of our learning community. If you have these skills we would love to hear from you.



## Community Notice

**Wellington - FREE Wild Eyes**

**Workshop at Zealandia for 8-12 years**

Saturday 5 December, 9.30am - 2.30pm

Wild Eyes is a new website launching next year offering nature missions for NZ kids. The website is being developed with support from NZ On Air's Digital Media Fund and MBIE's Nation of Curious Minds Fund.

Come along and try out some of the Wild Eyes activities! Join us for a morning at Zealandia, with activities around Tracking Tunnels, Kawakawa Tea, Nature Watching... and go on a Poo Hunt! Led by the team at Zealandia you'll hear from real scientists who work with nature, and help us collect photos for the Wild Eyes website in the process.

This free opportunity is limited to 16 participants between 8-12 years old on a first-come, first-served basis.

Contact Debbie on 027 240 2990 or at [debbie@goldthorpecreative.com](mailto:debbie@goldthorpecreative.com) for more information or to register.

