



Weekly Newsletter

17 February 2016

Ka whangaia, ka tupu, ka puawai = That which is nurtured will blossom and then grow

Term 1 - Issue 3

Important Dates

Wednesday 17 February	Picnic/Meet the Teacher Evening
Thursday 25 February	BOT Meeting - 7:00pm Staffroom
Friday 26 February	Twilight Gala 4:00pm - 8:00pm
Wednesday 9 March & Thursday 10 March	Three Way Conferences - individual meetings
Thursday 10 March	School Photos
Monday 14 March - Friday 18 March	Life Education Mobile Classroom at school
Friday 25 March	Good Friday
Monday 28 March	Easter Monday
Tuesday 29 March	Easter Tuesday
Monday 4 April	Bellevue School Athletics day
Monday 11 April	Postponement date for Bellevue Athletics day
Friday 15 April	Final day of Term 1

From The Principal's Desk



Kia ora, Nameste, Talofa, Konnichiwa, Guten Tag, Gidday, Vannakkam, ni Hao, Kia orana, Hola, Salam, Sa wat dee kha, Dia Dhuit, Goeie Dag, Bonjour, Hello, (please let us know the greeting in your language if it is not here)

NZSL

We are looking forward to catching up with you and your children at the 'Meet the Teacher' this evening. Remember if it is fine you are very welcome to come to school from 5:30pm onwards to picnic with other families. Please note the time(s) and locations for each of your children's meetings in this newsletter so that you do not miss these. They will provide you with important information to start your child's year of learning. Classrooms are open for your child and you to visit and their teachers available to chat with before/after the syndicate 'Meet the Teachers' sessions. In Te Hau Rawhiti (Rooms 1-6) you can visit classrooms after their syndicate 'Meet the Teacher' session in the library at 6:00 - 6:25pm. In Te Hau Tonga (Rooms 8-11) before/after the syndicate session at 6:30-6:55pm in Room 11, and Te Hau a Uru (Rooms 12-15) from 6:00pm before the syndicate session at 7:00 - 7:25pm in Room 12.

Please note that the Life Education Mobile Classroom is visiting our school later this term. Your child/ren will all visit the mobile classroom (with their class and teacher) twice during the time the mobile is here. Life Education is a charity that supports school programmes to provide children with knowledge to make informed choices about their health, to respect others and to learn to appreciate their uniqueness. The \$4:00 per student cost for these visits is covered by the \$10 contribution we ask for your child's Term 1 trips, performances and visits. This year is particularly exciting as the mobile classroom has new interactive technology installed since the last time it came to our school. A parent/caregiver/family/whānau session is being organised so that you can find out more about the magical experience your child/children will have during their visits. We will advise you of the details of this session once it has been confirmed with Kapa our Life Education educator. If you would like further information please look at the following website <http://www.lifeeducation.org.nz>

Assembly Dates

Friday 26 February	Assembly led by Rooms 10 & 15 - please note the change of date for this assembly
Friday 4 March	Assembly led by Rooms 8 & 13
Friday 18 March	Assembly led by Rooms 1, 2 & 11
Friday 15 April	Singing Assembly

Great news for Physical Education and Sports programmes at Bellevue School this year too. We are very fortunate to be accepted onto the 'Sport Start' initiative in 2016. This wonderful initiative began in South Canterbury schools and has involved a growing number of schools there for the last five years. It was piloted here in Wellington in 2014. Now our teachers and students are working with a specialist teacher and the amazing resources provided with this initiative in our learning programmes this year.

Please take note of the Water Safety/Swimming notice attached to this newsletter. With so many recent drownings and the proximity of a number of different opportunities to have fun in the water for children in New Zealand, we are very aware of the need to help our children understand how to be safe in and around water. Programmes are being planned to support all Bellevue school children to have the skills to do this.

See you at school later on this evening.

Ka kite
Karen



Current Email Address

Please make sure that the school has your current email address by emailing office@bellevue-newlands.school.nz

To assist us communicating directly with you please do this now.



Character Education

When learning or trying new things, perseverance (manawaroa) is a really important value to practice. It helps us to keep trying, to stick at something even when it is hard or scary, and to gain new 'tools' to further develop our abilities. Using perseverance helps us to stay focused and to become more skilled. We know that we can keep on going until we get there. Please continue to talk with your child/ren about how they can demonstrate manawaroa and how this helps them to become more successful.

GREAT WORKS ARE PERFORMED NOT BY STRENGTH BUT BY PERSEVERANCE.

Samuel Johnson
PETERBURY.COM

Helping in the school

At Bellevue School we encourage you to be actively involved in your child's learning, talk about your hopes for your child and to help out where you are able.

We are currently looking for parents, grandparents and adults in our community who can help out with some activities at school. We would like some helpers to:-

- read with students for some extra reading practice
- do some weeding with students
- help at Discovery Time (9:00—11:00am on Fridays)

If you are able to do any of these things, please contact the office with the day or activity you are able to support and the times you can help. We look forward to you helping our students become the best that they can be.

Smencils

These amazing pencils are made from 100% recycled newspaper and can be purchased from the school office. They are very durable, last for ages and have some interesting scents.



Cost= \$3:00 each or two smencils for \$5:00.

Road Patrols



Road Patrol Supervision – We need you urgently!!

Once again we have a fantastic group of Year Six students who have volunteered to be on road patrols each morning and afternoon. As part of this it is a legal requirement for the Road Patrols to be supervised by an adult while they are on

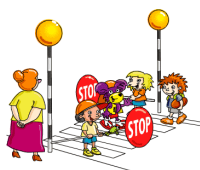
duty. **We require parents, caregivers, grandparents to help us with the supervision after school.**

Being an adult supervisor is a very easy job as the Road Patrols are very well trained in their role; adult supervisors just need to be there to reassure the Road Patrols they are doing an excellent job and to step in if something untoward were to happen. Volunteers receive an information pack about what is required and support to do this job.

Afternoon supervisors need to be at school at 2:50pm until just after 3:15pm. It would be wonderful if you could help us out as it is difficult for teachers to supervise in the afternoons as they are available to parents and have staff meetings after school hours. Please consider being a Road Patrol supervisor as it supports a group of students who have given up their time to ensure that all the students of this school get across the road safely.

If you are willing to supervise please e-mail Margaret Hesketh at: margaret@bellevue-newlands.school.nz

or ring her at school. If you are one of the parents who are carrying on from last year, thank you for your wonderful on-going support. It is very much appreciated.



Bellevue Behaviour Expectations

At Bellevue School we respect, share and care for all people and property. Everyone has the right to be respected, safe and to learn.

Our school rules are:-

- Be Kind
- Be Honest
- Be Respectful
- Be Responsible
- Be Safe

We actively promote our school values of empathy, confidence, respect, responsibility and resilience when working with students and families as issues arise for them. We also work to find ways to fix the situation/problem and think about what we can do differently next time. At Bellevue we endeavour to help children learn from any matters that arise, to cope with concerns and to become empowered to work through problems.

Kupu Hou (new word)



Kapa Haka (noun) = concert party, *haka* group, Māori cultural group, Māori performing group.

Pronunciation = cah-pah hah-cah



Te Pua wai Amua teina and tuakana (our junior and senior Kapa Haka groups) started again this Monday. Shanelle Ruka-Karauti is working with our Year 1-3 students at 1:30-2:00pm and our Year 4-6 students from 2:00-3:00pm each Monday. Kia ora Shanelle for sharing your knowledge and skills with us again this



Free Furniture

We have the following items that we are looking for a home for by Friday this week:-



- One under-desk keyboard drawer
- Three small computer tables (on casters)
- One large art table

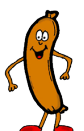
If you would like to look at these free furniture items, please contact the office. The first people to do this have first 'dibs' on this free furniture.

Sausage Sizzles 2016

Unfortunately Sausage Sizzle Fridays are not happening this term. These depend on having a committed number of people to organise, cook and distribute this lunch option.

If you can provide an hour of your time on Thursday mornings to process the orders, or on Fridays to cook or help distribute sausages in Term 2, please contact Mandy or Shona on: mackays.nz@gmail.com to help provide this much loved lunch option.

If there are sufficient people who can assist on a roster to share the work, then we can provide this lunch option for our students while raising funds for our school.



Safety



Last week the school was contacted by a resident in Longcroft Terrace who was concerned by the number of people parking illegally at the end of the corners of Longcroft when collecting or dropping off their children to school. Their concern is for safety and also how this makes it difficult for others to come in and out of the street. Please park considerably and safely when collecting or dropping off your child/ren.

If you are still turning in our driveway as you drop off your child or children please note that you are placing our other students and their parents/families at risk. It is also very difficult for our Road Patrol people to help people cross safely when you do this. Please go to the top of Bancroft Terrace to turn around so that everyone is safe.



Thank you to all our parents and caregivers who help to remind others how to park and turn safely. Our aim is for all our students and their families to make it to and from school safely each day.

Whole School Emergency Evacuation



To help us be prepared for an emergency should this occur during school time, each year we have a whole school evacuation practise. In 2016 this evacuation takes place on Friday 28 October. Further details of this will be shared with you in future newsletters. Please check the school has current emergency contact numbers and release adults details for your child/ren.

Library

We welcome visits to our library.
A reminder to our summer borrowers that books are now due back.

Overdue books:

Books are borrowed for two weeks. Years 0-2 can borrow up to 2 books, Years 3-4 up to 4 books, Years 5-6 up to 5 books. We do not charge for overdue books, but we do invoice for lost or damaged books. If your child has an overdue book, we still encourage them to borrow up to their limit.

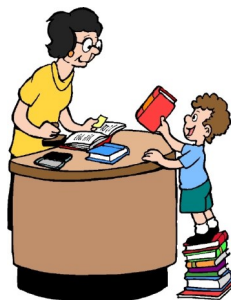
Our procedure for following up overdue books is :-

- Step 1 - Talk to the child and remind them about their overdue books
- Step 2 - Send home an overdue slip
- Step 3 - Ring parent / caregiver
- Step 4 - Letter with invoice

Your child visits the library every week with their class. The library is also open every playtime and lunchtime.

Book bags:

These are extremely useful not only for storing books but also for protecting them from food and spills. Please ensure your child has a book bag for their library visits.



If you have any concerns regarding the library, please contact Sarah on library@bellevue-newlands.school.nz

Clear and Open Communication

At Bellevue School we endeavour to work closely with students, parents and families/whānau. We know that misunderstandings can occur between home and school so ask that you work with us to resolve these. We have found that the best way to do this is to contact the school and communicate with the person who can help directly.

If parents/families have something they are not clear about or a concern, we ask that you please use the following procedure so that you are talking with the person who can best help you:-

Arrange a time to meet with the teacher to talk through your concern. If this does not clarify or resolve the issue for you, please talk with their senior teacher.

Our senior teachers are:-

Anne Smith (for teachers in Te Hau Rawhiti - Rooms 2, 3, 4, 5, 6)

Anna Borrer (for teachers in Te Hau Tonga - Rooms 8, 9, 11)

Deeann Daniels (for teachers in Te Hau a Uru - Rooms 13, 14, 15)

If your child is in Room 1, 10 or 12, then please contact either the **Principal** or **Deputy Principal** as they are the senior teachers for Anne, Anna and Deeann.

If there is still a misunderstanding or concern that has not been resolved, the next person to talk with is the Principal or in her absence the Deputy Principal.

We look forward to building clear and open communication with you to clarify and resolve any issues for you, your child and for their learning.

Give-a-Little Website for Playground

The school has a "Give-a-little" page up and running to assist in our fundraising efforts to get a new playground (and so far it is going well). If you can not get to fundraising events but want to support the school, please use this page. There may be grandparents keen to support the needs of their grandkids too? Please share the link on Facebook or with other contacts you may have. Every little bit helps and donations of \$5 or more are eligible for the IRD tax credit J.

<https://givealittle.co.nz/cause/playground4bellevue>



Breaking News



Please note that the school has been alerted to the fact that **there is whopping cough in our community**. If your child has a persistent cough please check in with your doctor or the medical centre for advice.

Our Playground - Our Fair



Supporting this Family Fair helps raise the final funds we need to see the installation of the new playground for your child's use.

Please help support this great event, and the addition of our new playground, by contacting the FUNdraisers with how YOU can help.

You can contact the fundraiser by email
fundraisers@bellevue-newlands.school.nz

Netball 2016

Thinking about playing netball this year? Netball is a fun sport that is for both boys and girls.

Northern Suburbs Netball are running the Future Ferns program for Years 1 to 4. This program has a skills based component and a game component. It encourages parent participation in running the sessions. Support for the parents is provided prior to the season starting. Players register directly with Northern Suburbs Netball.

Northern Suburbs Netball will be running it's usual Saturday Seven-aside netball for Years 5 and 6. This is coordinated by Bellevue School.

Those thinking about coaching or managing a Year 5 or 6 team should contact Jo Johnston – 027 2232020, email jo.johnston@outlook.com.

Without coaches or managers the teams will not be able to participate. More detailed information will be in the school newsletter in the following weeks.



Support for Schools

If you are a parent, staff member or member of the school community and you draw down a new ASB loan of \$150,000 or more, ASB will donate \$1,000 to your chosen participating school, so please think of Bellevue School if you are doing this.

To take up this offer, your new home loan application must be received, approved and then documented in a facility agreement, along with the completion of a school donation voucher, between 1 February 2016 and 30 April 2016.

Other terms apply. For full details and to download the voucher visit: asb.co.nz/schoolbanking



Comedy Night Fundraiser

Grab a group of friends and come along to a night of fun and laughter! Friday 4th March @ 8pm at the Johnsonville Club. The headline act is Wilson Dixon. Tickets are \$30 waged / \$25 unwaged and half the ticket price goes to the school to help build our much needed playground.



Please put your order and payment into a named envelope and send it to your child's class. The orders are sent to the office for processing by the Fundraising Committee and then tickets are sent home with your child.

School Photos



School Photos are being taken by 'School Memories' on **Thursday 10 March.**

A photo information leaflet has been sent home with the newsletter today. All students have their photo taken and a payment envelope featuring your child's photo will be sent home after photo day. NB:- **You are under no obligation to purchase any photos.**

PLEASE DO NOT MAKE ANY PAYMENTS FOR ANY OF THE PHOTOS BEFORE YOU GET YOUR PROOF ENVELOPES AFTER PHOTO DAY.

If you would like to order photos from the proofs received please send your order and payment back to your child's class teacher. The school office does not handle any photo payments or give change. If change is required it will be sent back by 'School Memories' with your photo order.

All payments for photos are made to School Memories, not Bellevue School.

Wheels/Scooter Days

Thank you parents/whānau for making sure that your child/ren have a helmet to wear on your child's wheels day. Students must wear their helmet to take part at lunchtime, and must be using their own scooter.

Thanks also to everyone who reminds students to wheel their scooters from the entry gate to the scooter rack, and from the scooter rack until they are outside the school gate. This helps make sure that pedestrians are safe inside the school grounds.



Scholastics Book Club

All orders are due in by Tuesday 1 March. Payment can either be by cash, credit card (details on Bookclub form) or by cheque made out to Scholastic Bookclub. Please take your order directly to the classroom and not to the office.

School Banking

Just a little reminder that children's banking is available through our school. ASB works with Bellevue School to encourage students to save.

School banking day is on Fridays. Our students can put their deposit envelopes in the 'drop box' in the office foyer during the week for delivery to the bank.

Please contact Amanda in the office if you would like a starter pack for your child to begin banking.



Meet the Teacher

Please join us this evening - if it is a lovely night we encourage you to come along with your family/whānau for a picnic in the school grounds from 5:30pm with other whānau/families and our teachers, followed by a **Meet the Teachers** time from 6:00 - 7:30pm.

Meeting times are:-

6:00pm - **Te Hau Rawhiti** (Rooms 1, 2, 3, 5 and 6) in the library.

6:30pm - **Te Hau Tonga** (Rooms 8, 9, 10 and 11) in Room 11.

7:00pm - **Te Hau a Uru** (Rooms 12, 13, 14 and 15) in Room 12.

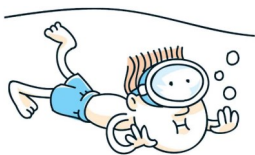
Please note that:

- times are staggered so that you can attend each meeting if you have children in different areas of the school.
- these meetings are a great chance for you to meet your child's teacher, the senior teacher in their area as well as finding out how things work in your child's room/area of the school and the teachers expectations for the year of learning.
- you can visit your child/ren's room before and after the syndicate 'Meet the Teacher' times to view their room and chat with their teacher

We look forward to catching up with you this evening to share some important information for your child/ren this year.



Swimming and Water Safety Programmes



In New Zealand we are very fortunate to be close to the sea, lakes and rivers which results in so many opportunities for us to have fun in the water. You will be aware that over summer there have been significant numbers of people coming into difficulties in the water and sadly many who have drowned. (see the news clip from <http://www.watersafety.org.nz> below)

When reviewing our school programmes we are aware that children need to learn the skills to keep safe in and around the water. Therefore Bellevue School's Health and Physical Education (PE) programmes include both 'water safety' and 'swimming'.

In 2016 our school is focusing on 'water safety'. This includes safety lessons in the classroom and some practical sessions eg: Beach Education. Then in 2017 all students take part in swimming lessons during school time at a local pool. From this year our Health and PE programmes alternate between 'water safety' (in even years) and 'swimming' (in odd years).

Last year it was optional for children to take part in swimming at school. Many parents/caregivers also took their children to private swimming sessions at our local pools in addition to those lessons provided as part of the school Health and PE programmes.

We are letting you know at this early stage of the year that in 2016 we are not going to be taking our students swimming during school, and next year all students will be swimming. Parents/caregivers/whānau may wish to organise after-school swimming lessons for their child/ren this year, and the years that the school does not provide these. They may also choose to organise additional after-school swimming lessons in the years that swimming is part of school programmes too.



Further details about the 'water safety' aspect of our programmes will be shared with you as the year progresses.

Holiday Drowning Toll Up on Five Year Average - 05/01/2016

Ten people died by drowning in New Zealand waters this official Christmas holiday period (4pm Christmas Eve until 6am this morning) – the same as last year's grim holiday toll and three more deaths than the five-year average of seven.

Water Safety New Zealand Chief Executive Matt Claridge says this year's holiday toll is a tragic result, particularly after a widespread call for water safety pre-Christmas through the launch of the 'Stop and Think before you Go near water' campaign, supported by ACC.

"It's a simple message (Stop, Think, Go) but ensures that thinking about water safety – and the risks associated with the water, including your own limitations – is a top priority. This can be the difference between life and death.

"The toll is gut wrenching. So many families have lost loved ones – a toddler, sons, daughters, friends – and while there's a whole community of people, including Coastguard to Surf Lifeguards, Maritime Officers and many others, working hard to keep New Zealanders safe in the water, we can't do it alone. We need all New Zealanders to make water safety a priority today if we're to bring our horrific drowning toll down."

COMMUNITY NOTICES

STELLAR FITNESS LOSE-WEIGHT-FOR-WINTER 12-WEEK WEIGHT LOSS CHALLENGE

Join the Weight Loss Challenge Where You Can Lose Weight and Win Cash. Prizes are paid to the 3 biggest losers based on the % of weight lost. Why not shape up and cash in?

This challenge is designed for women in the community who want to lose weight, lead a healthier lifestyle, or want to maintain weight loss that has already been achieved.

Whether you are just starting out on your weight loss journey, or just want a little extra motivation losing the extra couple of kilos, this challenge can help you get there!

Time to turn your resolutions into a reality!!!

Only \$40 for the whole 12 weeks! STARTS: Monday, 29TH FEBRUARY, 2016

LIMITED SPACES – REGISTRATIONS CLOSE FRIDAY, 26TH FEBRUARY, 2016

More information/to register: www.stellarfitness.co.nz



MOGMUSIC Private tuition available

PIANO BEGINNERS from age 5

RECORDER BEGINNERS from age 7

GUITAR BEGINNERS from age 8

UKULELE BEGINNERS from age 7

TRUMPET BEGINNERS from age 8

VIOLIN BEGINNERS from age 5



Places available now.

All lessons held at MOGMUSIC studio in Brooklyn.

Please phone MOGGIE GRAYSON 3848-213 to book in.

\$20 will be donated to the school for each new enrolment.

NORTH WELLINGTON JUNIOR FOOTBALL CLUB

Registrations are now open for children who would like to play at the North Wellington Junior Football Club, on the following link: <http://www.northwellingtonfootball.com/juniors/registration/>
The football season commences on Saturday 18th April. Trials for 9th – 14th grades (children turning 9 – 14 this year) will be held on Sunday 8th and Sunday 15th February at Alex Moore Park. Children wishing to attend trials will need to be pre-registered by Thursday 5th February.

Please contact the Club Manager on administrator@northwellingtonfootball.com for queries or come down and see us at our trial days if you would like to know more about the Club.



Free Back Pack Checks

Improper backpack use has been linked to back pain in children. It is important to have a back pack with two shoulder straps that are padded and about 4cm wide. Children should always use both shoulder straps and pull them tight to keep backpack firmly against their back. Ideally backpacks would have a waist strap and have good padding to stop things sticking into their back. The weight of the school bag should be no more than 10% of their body weight and should never be so heavy that it forces the child to lean forward for balance. Ensure your child always knows to tell a parent if they have back pain or discomfort.

Dr David Kelly (at Kelly Chiropractic, 12 Moorefield Road, Johnsonville) is offering free back pack checks for Northern Suburbs school children. They are also offering a free postural and scoliosis check at the same time. Call within the next week on 4786194 to book in for a free backpack check for your child.

