



Weekly Newsletter

11 May 2016

He aha te mea nui ō te ao? He tāngata. = What is the most important thing in the world. It is the people.

Term 2 - Issue 2

Important Dates

Thursday 12 May	FUNdraisers Meeting 7:00pm Whare iti
Thursday 19 May	BOT Meeting 7:00pm Staffroom
Friday 20 May	Board nominations close (noon) Playground Opening 2:30pm Student Council 'I wish I was' Day
Tuesday 31 May	Northern Zone Cross Country
Friday 3 June	Board Election - poll closes for voting (noon)
Monday 6 June	Queen's Birthday (school closed)
Tuesday 7 June	Teacher Only Day (school closed)
Friday 10 June	New Board takes office
Wednesday 15 June	Matariki Evening - 6:15pm in school hall
Thursday 16 June	FUNdraisers Meeting 7:00pm Whare iti
Thursday 23 June	BOT Meeting 7:00pm Staffroom
Wednesday 6 July	Reports go home
Friday 28 October	Annual whole school emergency evacuation (in Term 4)



Assembly Dates

Friday 13 May	Assembly led by Rooms 6 & 12 - 2:15pm
Friday 3 June	Assembly led by Rooms 3 & 14 - 2:15pm
Friday 17 June	Assembly led by Rooms 10 & 5 - 2:15pm
Friday 1 July	Te Puawai Amua & Choirs - 2:15pm

Welcome

Haere mai ki te kura o Bellevue.

We would like to welcome Lucy Foster to Bellevue school.

A special welcome to our school learning community to you and to your whanau/family.



From The Principal's Desk



Kia ora, Nameste, Talofa, Konnichiwa, Guten Tag, Gidday, Vannakkam, ni Hao, Kia orana, Hola, Salam, Sa wat dee kha, Dia Dhuit, Goeie Dag, Bonjour, Mabuhay, Bula Vinaka, Hello, (please let us know the greeting in your language if it is not here)

NZSL

What a shame that the run of great weather has been broken. Consequently there are some very disappointed students who could not use their new playground today. Thank you to all those people who have let us know how great they think the playground is for your kids. Already we have noticed some skill development and growing confidence in using it in some creative ways. Our senior student helpers have been wonderful in supporting our younger students when it is their day on the swings, seesaw and playground. Staff have also worked with their classes to raise awareness of possible uses and safety on these new playground structures. If your child is using playgrounds after 3:00pm, or outside school hours please can you help monitor safety for your child/ren too.

Please note that we have a special opening celebration for this wonderful new addition to our grounds at 2:30pm on Friday 20 May. An invite is attached to the newsletter today asking you to join us for this great occasion. We are also asking some other important people who have helped fundraise or provide grants to join us at this event. See you next Friday at 2:30pm at this community celebration.

Have a great week everyone.

Ka kite
Karen



Character Education

Keep up the great conversations about the value of Honesty or Pononga with your children. Being honest helps us do the right thing. We know we are practicing honesty when we:

- * Say what we mean,
- * Make promises we can keep
- * Admit our mistakes
- * Refuse to lie, cheat or steal
- * Tell the truth tactfully
- * Are true to ourselves and do what we know is right.

Being honest
never hurts anyone.
Being a liar
hurts only you.

When we are honest we can fix up any mistakes we make much more quickly and easily. If we lie about what we did then it takes longer to sort something out and repair any damage to relationships or property.

Sometimes it is hard to tell the truth when we have let ourselves or others down, but admitting our mistakes means half of the problem is already solved... Keep up the great work of practising telling the truth - even when this is hard to do.

Trips and Performances

Thank you to those parents who have already paid their Trips and Performances contribution for this term. The amount is \$10 per child per term. To pay this contribution you can either pay online or send it along to your child's classroom teacher.

Please do not pay directly to the school office as it needs to be recorded via the class finance book.

If you have not paid for Term 1, please do this at the same time. To date each child has paid \$3 towards Life Education visits, and the remaining \$17 from T1 and T2 is going towards trips this term. Please look out for further information from your child's class teacher and teams ie: Te Hau Rawhiti, Te Hau Tonga and Te Hau a Uru.



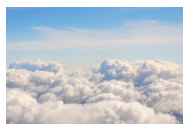
Star Writers

Love our Earth where..
Broken glass mountains try to look icy
Where small dripping mist bites me
Where the sunset explodes pale colors
Where crystals flicker and twinkle in the deep blue sky
I love our earth where...

Pitch black, never ending tunnels surround me
Where fluffy, mushy clouds feel as soft as a pillow when you lay lazily in the sky

Where the burning hot sun gleams at us
Where the blooming flowers grow

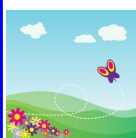
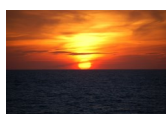
By Munroe Cook, Room 10



I love our earth where..
Bubbles of dew drip down our colourful leaves
Where small wavy rock pools have tiny sea animals and bits of shells with broken up bits of rocks
Where white white snow sprinkled pointy mountains
I love our earth where..
Bubbles of dew drip down our colourful leaves
Where small wavy rock pools have tiny sea animals and bits of shells with broken up bits of rocks
Where white white snow sprinkled pointy mountains
Where graceful water dances over misty waves.

I love our earth where..
Fluffy clouds are so cuddly you can sleep on them
Where the sunset has many bright colours like, apricot orange, rose red, and lemon yellow
Where Waterfalls drop gracefully
Where leaves scatter across the ground.

By Dani Steel, Room 10



The seed quietly floated to the ground like a little leaf. It twirled like a flash and twinkled like a shimmering fairy in the peaceful air. It spun so fast that it's wings smoothly took it to the ground.

Grace Patterson, Room 6

'I Wish I Was' Day

On Friday May the 20 the Student Council is be organising an 'I Wish I Was Day' to raise funds for the Make a Wish Foundation.

The Make a Wish Foundation provide wishes for very sick children in New Zealand. We can support them by getting dressed up and bringing a gold coin donation on the day.

We look forward to seeing all your creative dress-ups!



Lost Property

We have a large amount of lost property which will be put on display outside the hall this **Friday 13 May** before and after assembly. If it is wet this will be on display in the covered veranda areas of Rooms 1 - 6.

Please come along and check for any items that your child/ren may have misplaced or may be missing from home.

All unclaimed items by the end of school on **Friday 13 May** are donated to charity.



Kupu Hou (new word)

kai(nga): eat / food
Pronunciation = kye (ngah)

E **kai** ana te pēpi i ngā rīwai.
The baby is *eating* the potatoes.

Kainga tāu āporo!
Eat your apple!



Thank you

To Cendrine for running a yoga class during the holidays and adding a healthy donation to our playground fund.

To Sheree Harris for collating the pizza orders, counting the money and delivering pizzas on Pizza day on the last day of Term 1 and Adrienne Avery for helping with the pizza deliveries.

Thank you to Tracy Steel, Lynelle Howell, Brenda Johnston and Nita Glew for your assistance on the Cross Country race day and to all the parents who came to cheer and support the children. Also thank you to all our wonderful teachers for working together to make this event successful.

Jo Johnston for all her hard work in organising teams, coaches, managers and umpires for netball teams. We know how much hard work goes into doing this each year! Thanks also to Liane who came to school to do some extra coaching during lunchtime with the girls.

Kia ora koutou.

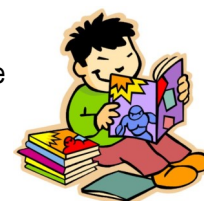
Thank You!

Scholastic Bookclub

All orders are due in by Thursday 19 May. Payment can either be by cash, credit card (details on bookclub form) or by cheque made out to Scholastic Bookclub.

Please take your order directly to the classroom and not to the office.

Late orders cannot be accepted.



Bellevue School Netball – Years 5 & 6

The results from Saturday 7 May:

Y6 Emeralds lost 7-10

Y5 Pulse won 13-0

The draw for Saturday 14 May:

Y6 Emeralds v QMC Burgundy Newlands College Court 1 at 11.00am

Y5 Pulse v Ngaio Steel Newlands College Court 5 at 12.20pm

Cancellations will be posted on the Northern Suburbs website from 7.30am www.nsnetball.co.nz

Good luck and enjoy your netball!



The Entertainment Book

Bellevue School is selling Entertainment Books this year to help fundraise the last \$5000 to upgrade the playground. \$12 of every book sold comes directly to the school. We are selling the traditional book and the new digital version. Order online by using the link below, and feel free to post this link to your facebook page to spread the word (you can get the link from the newsletter online).

<http://www.entbook.co.nz/1g04109>

Also if you would like a poster for your workplace, see the school office or contact Heather Lange on phone 478 3692 or email at heatherandmattlange@gmail.com

The entertainment books have arrived and are available from the school office.



School Trustee Elections

The School Trustee Elections are being held this year, and we need you to get involved.



Our school is governed by a democratically selected group of people called the Board of Trustees. These trustees make important decisions about our school's strategic direction, student progress, management, school culture and more.

Being a trustee is an important and rewarding role. Parents, caregivers and people from the wider community can all be trustees. We are looking for a range of people with a variety of skills and experiences, who believe in making a positive difference to our children's learning.

Our Election Day is 3 June 2016.



Make sure your vote counts – vote for the candidates who bring the best skills to the table. All parents of full-time students can be nominated and should vote in the elections.

Give-a-Little Website for Playground

The Give-a-little site has so far raised \$1075.00 towards the new playground. Please remember to share the link with friends and family (and on social media) to help raise more funds. Remember all donations of \$5 or more are eligible for a tax credit.

<https://givealittle.co.nz/cause/playground4bellevue>



FUNdraisers

Please note that our next meeting is at 7:00pm this Thursday 12 May in the Whare Iti. Come along and join us as we plan some fun events that support important projects and help provide extra learning opportunities for our students. We are currently raising the final funds for the new playground and for upgrading/renewing the safety surface under the playground next to the kindergarten.

Coming home with your newsletter today is a flier for a special promotion for Norwex cleaning products that enable you to clean without chemicals. Please note that this promotion runs from today until 31 May.

Our Give a Little Website is still up and running, the Entertainment Books are available from the office or on-line, as are our school T-shirts. All funds from these fundraisers support the upgrade to the playgrounds for your child/ren to use.

See you at tomorrow evening's get together.



Cross Country

Congratulations to all our students who participated in the Cross Country on Tuesday. You showed determination and perseverance in completing your run. Well done!



Thank you to Tracy Steel, Lynelle Howell, Brenda Johnston and Nita Glew for your assistance on the day and to all the parents who came to cheer and support the children. Also thank you to all our wonderful teachers for working together to make this event successful.

Cross Country Results

Year 6 Boys:

Dmitry Joffe-Devoy (1), Hamish Browne (2), Ryan Mackay (3)

Year 6 Girls:

Allana Caldwell (1), Kaitlyn Russell (2), Jade Bennie (3)

Year 5 Boys:

Jacob Etti (1), Finlay Graham (2), Noah Williams-Harris (3)

Year 5 Girls:

Lily Welling-Noble (1), Brody Cooke (2), Maia Commerford (3)

Year 4 Boys:

Benji Holden (1), Brett Edgecombe (2), Benjamin Moodie (3)

Year 4 Girls:

Keita Abraham (1), Danielle Steel (2), Lynne Farah (3)

Year 3 Boys:

Will Graham (1), Liam Boyd-Smith (2), Savar Baldeo (3)

Year 3 Girls:

Helen Jobson (1), Niqui De Leon (2), Daisy Clark (3)

Year 2 Boys:

Jacob Bartrum (1), Luca Nicholls (2), Phoenix Carter (3)

Year 2 Girls:

Grace Patterson (1), Seren Mawby (2), Josie Lange (3)

Year 1 Boys:

Silas Stuart (1), Riley Crerar (2), Mana Maora (3)

Year 1 Girls:

Clare Geursen (1), Callie Sims (2), Danyelle Subecz (3)



Playground Opening

Please mark your diary for the afternoon of 20 May. There is a special community opening ceremony for the playground that is being installed.

This event starts at 2:30pm and finishes with a shared afternoon tea. An invitation has been sent with the newsletter today.

We hope that you can join us to help celebrate the amazing effort our great community has made to replace the old, unsafe playground that had to be removed at the end of last year. Well done everyone who helped with this. Due to your hard work we were only without the playground for one term and one week.

Keep up the great work of fundraising for the last dollars for this amazing asset for our students to use.



Bellevue School
Bancroft Terrace
Newlands 6037

Phone: 04 478 7037
Fax: 04 477 3945
E-mail: principal@bellevue-newlands.school.nz

**Bellevue
School**

e tipu e ako
where learning grows

We are on the web

www.bellevue-newlands.school.nz

Community Notices

Community notices are included as space allows, and are limited to no more than 100 words. Every effort is made to present accurate information, however the board does not accept responsibility for any inaccuracies. The Board is unable to accept responsibility for goods or services advertised.

Norwex Fundraiser:

Reduce the chemicals in your home with Norwex
Save money, time & the environment!

5% discount to you

30% to the school

View the catalogue in the school office or online:

<https://melissabartram.norwexbiz.nz/>

Call or text Melissa for
questions or
orders 021 340 661.



Newlands Fun Fit Camp - only \$2 per session!

There are 2 sessions a week and we welcome all fitness levels.

For your \$2 you get:

- * A fitness session in a fun and friendly environment
- * Nutritional advice
- * Personal Wellness
- * Profile to track your progress



Join our Facebook page for more information:

www.facebook.com/groups/Newlandsfunfitcamp/

Kids Cross Country Series - come along and have some fun

Athletics Wellington is again running the **Kids Cross Country Series** in partnership with Les Mills and the Shoe Clinic over the winter months at various venues around the Wellington region. First up is Karori Park on Sunday 15 May. Other venues are Upper Hutt, Petone, Tawa and Mt Victoria. Races for pre schoolers though to year 8s. This event has grown in the past few years with up to 600 kids taking part, so come along and have some fun.

For more information or to enter go to:

<https://www.athleticshub.co.nz/our-programmes#kidsxcountry>



Visiting Author - Liz Pichon, author of the **"Tom Gates"** series of books for children will be at The Children's Bookshop in Kilbirnie Plaza on Wednesday 11th of May between 3.15pm and 4pm to meet her readers and sign books. Bring your copy to be signed. All welcome, no charge.

