



Weekly Newsletter

8 June 2016

He rā whatiwhati kō = A day of hard work

Term 2 - Issue 6

Important Dates

Thursday 9 June	Votes counted for Board election
Friday 10 June	New Board takes office
Wednesday 15 June	Matariki Evening - 6:15pm, school hall. In consideration for Kapai Kids, please <u>do not enter hall before 6:15pm</u>
Thursday 16 June	FUNdraisers Meeting 7:00pm in Whare iti
Friday 17 June	Magnetic Times Table orders due in
Thursday 23 June	BOT Meeting 7:00pm in Staffroom
Friday 24 June	Te Hau A Uru Fundraiser Sausage Sizzle
Wednesday 6 July	Reports go home
Friday 8 July	Last day of Term 2 Pizza lunch day at school
Friday 28 October	Annual whole school emergency evacuation (in Term 4)



Assembly Dates

Friday 17 June	Assembly led by Rooms 10&15 - 2:15pm
Friday 1 July	Te Puawai Amua & Choirs - 2:15pm

Welcome

Haere mai ki te kura o Bellevue.

We would like to welcome Neve Nicholls to Room 4 and Denise Copley who has joined the teaching team to work as release teacher in Rooms 1-6.

A special welcome to our school learning community to you and to your whanau/family.

From The Principal's Desk



Kia ora, Nameste, Talofa, Konnichiwa, Guten Tag, Gidday, Vannakkam, ni Hao, Kia orana, Hola, Salam, Sa wat dee kha, Dia Dhuit, Goeie Dag, Bonjour, Mabuhay, Bula Vinaka, Hello,
(please let us know the greeting in your language if it is not here)
NZSL

Welcome back to school after the longer weekend with your children. We hope that you managed to enjoy this extra time away from work - especially when the weather was so great! Our wonderful teachers were at school yesterday to further develop their professional learning. Having a whole day to work on this is a bonus as often teachers do this at staff meetings after a full day in the classroom. We also know that this professional learning improves what we do as teachers so has a direct impact on further developing your child's skills, knowledge and abilities.

Today is national Support Staff Day so we would like to take this opportunity to thank our wonderful office staff, teacher aides, librarian and the people who do our cleaning and grounds work. These amazing people work alongside teachers and parents to help make our school a wonderful learning place for your children. Thank you to our great support team at Bellevue School.

Attendance Matters! When reports come home at the end of this term you will note an attendance percentage for the first part of this year. The reason for this is that it is very important for your child to attend school every day that they are well. Research shows attendance as one of the most important factors that impacts on your child's learning, along with effective teaching and student engagement. If your child has been away regularly then there is less chance that they will attain the expected level of achievement for their age. For example, if your child's attendance sits at 90% in most school years, some parents think this seems a reasonable attendance rate. However by the time that they reach the end of Year 10, they have only attended school for 9 years so have missed the equivalent of one full year of learning/schooling.

With a special Matariki evening next Wednesday, please check out the notice later in this newsletter as we would love you to join us for this fun event.

Next week our Room 4 New Entrant room is in action full time with Mrs Charlesworth as the class teacher. If your child is in Room 3 they will receive a note this afternoon to let you know who is their afternoon teacher. We welcome Denise Copley who is the wonderful person who is working as release teacher in the Te Hau Rawihiti (Rooms 1-6) from Monday to Thursday afternoons when Mrs Gullen is teaching Reading Recovery.

Have a great week everyone.

Ka kite
Karen



Character Education

Thank you for continuing to support your child/ren to practice and demonstrate their understanding of the value of honesty, truthfulness or pononga. Please continue to acknowledge them when you see them being honest ...especially when they do something they are not proud of or they know has upset you.

At school we often talk with children about a problem being half solved when we tell the truth about our part in this. We also encourage children to understand that honesty and truthfulness are important attributes to resolve issues as these arise. Without honesty it is hard to trust others, build relationships and make friends, so Pononga helps us build our sense of belonging too.

BEFORE YOU SPEAK
THINK

T – is it TRUE?
H – is it HELPFUL?
I – is it INSPIRING?
N – is it NECESSARY?
K – is it KIND?

Kupu Hou (new word)

Whetū = star

Pronunciation = feh-too

Tekau ngā whetu e tīrama ana i waho.
There are *ten* stars twinkling outside.

Ko Meremere-tū-ahiahi te **whetū** tuatahi o te pō.
The first **star** at night is Meremere-tū-ahiahi.



Thank you

Thank you to...

Celia Wade-Brown who donated eight balls for use in our playground when she could not make the Playground Opening earlier this term.

Room 14 parents/caregivers/whanau who joined their children and Kendra for a get together after assembly on Friday - also for making a great effort to welcome Kendra to our school and learning community. Kia ora koutou.

Cameron Yip (R9) and Ethan Roper (R8) who demonstrated the values of caring, consideration, duty or service when they were picking up rubbish that was left in the playground last week. Tino Pai Rawa!

Our teachers who worked very hard at Teachers Only Day yesterday, and continually show their commitment to our learners by going the extra mile to adjust their teaching to improve student learning. Mahi pai!

Our amazing support staff team who support student learning at Bellevue School. Tu meke!

Honesty Heroes

At Assembly last week the following students were acknowledged for demonstrating honesty or pononga:

Jiya Lal (Room 1)
Atrisa Aghamohammadi (Room 2)
Olive Anderson (Room 3)
Riley Crerar (Room 5)
Kylie Wylie-Kershaw (Room 6)
Aria Horsfall-Whioke & Tiernan Finn-Burke (Room 8)
Belinda Tan & Alyana Campbell (Room 9)
Jess Foster (Room 10)
Benjamin Tibby (Room 11)
Pomare Dickson (Room 12)
Joel Head & Phoenix Virtue (Room 13)
Owen Merdler & Finley Graham (Room 14)
Cyprus Kinzett (Room 15)



We also acknowledged the graduating Peer Mediators for their honesty in training and working with others in the playground:



Allana Caldwell (R12)
Andrew Cheng (R13)
Ashleigh Howell (R12)
Gaure Sharma (R13)
Harry Baker (R15)
Jessica Curry (R13)
Lily Welling-Noble (R13)
Rohan Mani (R14)
Seth Stoneham (R14)
Tessa Mawby (R12)



FUNdraisers

FUNdraiser's 'How Can You Help?' Form:

Thank you to the people who have returned their form offering to help with fundraising events. If you haven't returned your form yet it is not too late! Please send your form to your child's class. New forms can be printed off the school website if it has been misplaced or email nerys_roberts@yahoo.com to let us know how you can help.



Magnetic Times Table Fundraiser:

We are selling a times table magnet for \$6.00. The magnet can be put on your fridge or turned into a puzzle. Make learning the times table fun by ordering yours now! Order forms were sent home last week with the newsletter.



Orders due in by Friday 17 June.

Please send your order form and money to your child's class. A sample is available in the office for viewing.

Give-a-Little Website for Playground

The Give-a-little site has so far raised \$2,150 towards the new playground. Please remember to share the link with friends and family (and on social media) to help raise the remaining funds to pay off our new playground.

Remember all donations of \$5 or more are eligible for a tax credit.

<https://givealittle.co.nz/cause/playground4bellevue>





Enviro Group



This week Enviro Group planted lots of flower seeds including Asters, Violas, Sunflowers and Salvias in small containers. We hope to plant them out in spring time. We also wrote ideas for how we can stop people damaging the plants around the school.



Hanging out indoors Twiglands Garden Centre kindly donated magazines to our group. This issue was full of tips on storing and caring for your plants, including how to decorate your room with a homemade air plant hanger. To do this, you put little plants into chopped up drinking straws.

Did you know houseplants help keep us healthy by cleaning our air? They do this the same way that outside plants do, by turning carbon dioxide into oxygen.

By Ruby Bennie



Traffic and Student Safety

Following several 'close-calls' as a few of our parents/whanau make u-turns or turn into driveways to turn around quickly, many parents and the school have alerted the Police and Parkwise. You may notice their presence outside the school gates at various times in the future. Be assured that they will take action for unsafe driving behaviours.

Please follow the road rules and drive carefully - especially in wet or less desirable weather. We would hate to see haste or less sensible driving decisions leading to one of our children being run over.

Please look out for all our students and their whanau by going to the top of Bancroft Terrace to turn around. It is better to have a wet child or two than one that has been hit by a car rushing to turn quickly.



Matariki Fun - next Wednesday

Bellevue School is celebrating Matariki!

Please join us for our whakahari/festivities in the school hall on Wednesday 15 June at 6.15pm.

Come along and see some of the things that your children have been learning about Matariki.

We invite you to bring along kai/food for your whānau/ family and a rug or cushions to relax on as you enjoy some waita/songs and paki/stories.

We look forward to seeing you there.



Saving Awards

Congratulations to Levi Good-Turner, Tyler Good-Turner and Pakawa Moldon for receiving an ASB award for reaching their savings goals. If you wish to find out about School Banking for your child, please make enquiries at the office as they have starter packs for children who wish to do this.

A reminder that Friday is the day that banking is taken to the bank. You can deposit your book in the ASB post box in the foyer area by the office.



Maintenance Contractor Bellevue School - Newlands

Skilled, experienced building maintenance person required for 16 hours service delivery per week. Ability and commitment to keep school environment well maintained and well presented.

For further information, an application pack or to arrange a visit to the school: phone (04) 478-7037 or principal@bellevue-newlands.school.nz

Netball 2106

Draw for Saturday 11 June:

Y6 Emeralds v Thorndon Black,
Newlands College Court 1
at 11.40am

Y5 Pulse v St Bens Stars
Newlands Intermediate Court 2
at 10.10am

Cancellations will be posted on the
Northern Suburbs website
from 7.30am www.nsnetball.co.nz

Good luck and enjoy your netball!

Year 1 and 2 Future Ferns Netball Programme Term 3 2016:

Northern Suburbs Netball is running the Future Ferns programme for Y1 and Y2 boys and girls. It will be run on Sunday afternoons and held inside at Nairnville Recreation Centre. It will run for all of term 3. If you haven't already please register your child's interest to jo.johnston@outlook.com

Further information will be sent out once you have registered your interest.



BOT Elections

Thank you to everyone who voted in the 2016 elections.

Nominees will be informed of the results this Friday and the final results shared with the community after this.

Full results will appear in next weeks newsletter and the Independent Herald.

Amanda Beauchamp
Returning Officer



Entertainment Books

We are selling through the office for \$60 - with \$12 from each sale going directly to the school. There are thousands of dollars of savings at restaurants, retail outlets and family activities.



Order the book or go digital and have them available on your phone.

<https://www.entertainmentbook.co.nz/orderbooks/1q04109>

Nits

If these little nasties are making you and your child's life a misery, please note that the school has a Robi Comb and two nit combs that you can borrow to help get rid of them. Please contact the school office to access these combs.



Oophs

Teachers are currently planning EOTC events (ie: school trips and visits) for the rest of 2016.



Please note that information about these will come to you from your child's class teacher or via their syndicate teams - ie: Te Hau Rawhiti, Te Hau Tonga Te Hau a Uru.

Although many people have forwarded the \$10 for trips and performances for this term, or have paid \$40 for the year, we respectfully ask you to please check in with the office if you are unsure whether you have paid for your child for Term 1 and Term 2. Please as we rely on these funds to pay for the buses (at \$7 per bus trip) and to cover the entry fees to events or places.



Bellevue School
Bancroft Terrace
Newlands 6037

Phone: 04 478 7037
Fax: 04 477 3945

E-mail: principal@bellevue-newlands.school.nz

Bellevue School

e tipu e ako
where learning grows

We are on the web

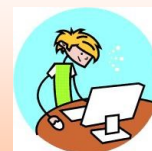
www.bellevue-newlands.school.nz

Community Notices

Community notices are included as space allows, and are limited to no more than 100 words. Every effort is made to present accurate information, however the Board does not accept responsibility for any inaccuracies. The Board is unable to accept responsibility for goods or services advertised.

School Holiday Computer Classes

For ages 5 – 15 in Minecraft, Create 3D Games, Coding, Web Design, Video Editing, Animation and Building a PC and if young the Discovery Computer Class.



For further information call 499 2211 or go to www.grandtraining.co.nz.

Tawa All Good Adult Colourers are meeting again this Sunday morning!

We meet up every last Sunday of the month, at the Tawa Community Centre Boardroom, \$2 to cover costs, thanks to Tawa Community Centre!

I will bring my resources to get you started colouring and zendoodling. You can also bring your own pencils and projects. No artistic skills needed! So bring a friend, get a break, relax, have a chat, a coffee and be creative!!



You have to let me know if you are coming along, as places are limited :-). Just txt/call 021 134 7541/email monique@easynowmindfulness.com. Looking forward to see you there!

Quiz Night Fundraiser:

In support of 2-club football 2016 Juniors player development trip to Argentina with Boca Juniors.

When: Sunday 31 July

Time: 6:30pm, quiz starts at 7:00pm

Where: 1841 Bar & Restaurant,
1 Disraeli, Johnsonville

Cost: \$15 per person - selling fast

Get your sports team or work group on board for a fun night!

Quiz, Auctions, Prizes

Contact Gareth to reserve your tickets:
ggr888@gmail.com or
text 021 364314

