



Weekly Newsletter

4 February 2015

Hauī e! Hui e! Taiki e!
= Join! Gather! Intwine

Term 1 - Issue 1

Important Dates

Friday 6 February	Waitangi Day –School closed
Wednesday 11 Feb	Powhiri for new teachers and students - 10:45am in hall
Thursday 12 February	'Meet the Teacher' Evening for Parents/whanau + students
Friday 13 February - Friday 27 March	Weekly swimming lessons
Wednesday 18 Feb	First school assembly (on Wed in Term 1 as swimming on Fridays)
Thursday 19 February	BOT meeting—7:00pm in staffroom
Thursday 12 March	School Photos
Monday 16 March	Teacher Only Day - School closed
Thursday 2 April	Last day of Term 1
3 - 19 April	Easter and school break at end of Term 1
20 April	9:00 - Term 2 begins

Assembly Dates

18 Feb - 2:15pm	Rooms 6 & 8
4 March	Rooms 10 & 15
18 March	Rooms 13 & 5
1 April	Rooms 12 & 1

From The Principal's Desk



Kia ora, Nameste, Talofa, Konnichiwa, Guten Tag, Gidday, Vannakkam, ni Hao, Kia orana, Hola, Salam, Sa wat dee kha, Dia Dhuit, Goeie Dag, Bonjour, Hello, (please let us know the greeting in your language if it is not here)

NZSL

Welcome back to the school year everyone. What a joy to see such re-energised students and teachers - and their great passion for learning! The friendly greetings, anticipation and enthusiasm have made for a fantastic start to school for us all. Emma Cummings and Deean Daniels are welcomed additions to our teaching team too.

Please make a point of adding next Thursday (12 February) into your diary or phone to "Meet the Teacher" and find out how your child's classroom learning programmes will work this year. You are welcome to bring your child/ren with you to this. Rooms 1-6 are meeting at 6:00-6:25pm, Rooms 8-11 at 6:30-6:55am and Rooms 12-15 at 7:00-7:25pm. If you are waiting for the later meeting, you are very welcome to come into the staffroom and help yourself to a cup of tea or coffee while you wait. We look forward to working with you over the next 11 months to support your child/ren's growth, development and learning.

Learning is a life long process which includes the school day along with the many and varied other opportunities/experiences outside this time. Teachers work to provide opportunities for connecting new learning with prior experiences so that students can make the links to build on their existing skills, capabilities and knowledge. We endeavour to provide authentic learning connections with students' worlds while also providing opportunities for them to be actively engaged in their learning. While all learning is worthwhile, it can also be hard work at times. We encourage children to know/understand that trying new things can be challenging; also that making mistakes, having set backs and putting in the effort are all natural parts of learning. One of the things that we adults can do is to keep encouraging children to value learning and talk about this with them.

We look forward to catching up with you over the next few days and at the 'Meet the Teacher' evening next Thursday. Please note that these meetings are a great way for you to meet your child's teacher and their parents too.

A reminder that children are expected to arrive at school between 8:30am and 9:00am. If required please note Kapai Kids run a before school programme that releases your child at 8:30am. We ask that students are not at school before 8:30am so that teachers can get prepared for the day of learning.

Ka kite, Karen 😊

Welcome

Haere mai ki te kura o Bellevue

We would like to welcome the following students to the Bellevue School community:

Room 1: Sameera Praveen, Mason Baker, Harper Cook, Eden Flood

Room 2: Decius Howarth, Ruby Dawson, Seren Mawby, Leo Sargeant, Danae Russell, Sienna Moir, Naizak Haleem, Nuhaik Haleem, Allergra Mounter

Room 3: Ty Nguyen Room 8: Tyla Dawson

Room 10: Faith Vasilimiratu Room 12: Tawera Corbett

Room 13: Lea Kingsford

A special welcome to our school learning community to you and to your whanau/families.



Character Education

At Bellevue School we concentrate on one value a term as part of focusing our students for their life of learning. Using Character Education values we focus on ideas that are universal across cultures, spiritual and moral groups. This helps us build up an environment of caring and respect to support our students to learn and grow.

The value that we are celebrating and cultivating in Term 1 is **Honesty/Truthfulness** or **Pono-nga/ Whakaata-pono**.

Honesty is about telling the truth – no matter what. It is about encouraging each other to admit our mistakes even when we know someone might be disappointed or angry. We encourage children to know that as humans (and part of this 'human-ness') we make mistakes and will face obstacles in our lives. When we are learning it is natural for mistakes and setbacks to occur. So please talk with your child/ren about why we encourage honesty and what this involves. When we are honest we don't try to fool ourselves or others. As Horton (the Dr Seuss character in 'Horton Hatches an Egg') says we need to say what we mean and mean what we say... and only make promises we know that we can keep. Enjoy talking with your child/ren about examples of honesty and truthfulness over the next nine weeks.

Kupu Hou (word of the week)

Kura = School **Pronunciation** = coo-rah

He pai tōku **kura**.
My school is a good *school*.



Te **kura** o Bellevue =
The school of Bellevue or Bellevue School

Kāore e roa ka tīmata anō te **kura**.
It won't be long until *school* starts again.

Thank You to ...

Anna, Sheree & Mandy for assisting the office and support staff with the processing and delivery of stationary orders to classrooms this week.

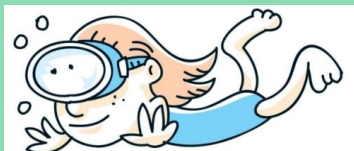
Thanks also to our wonderful staff who have been at school over the past weeks preparing for a great start to the academic year for your children.

Swimming 2015

Swimming lessons are on Fridays starting from next week (13 February).

A notice accompanies this newsletter to advise you of your child's swimming time and organisation. As of today we are unable to accept any further registrations for swimming this year.

If enrolled your child will need to bring their togs and towel each Friday. Please check that you have paid the \$20 tuition fees to the school office before 13 February. The cost of travel to the pool by bus is covered by a grant the school successfully applied for.



Stationery

Many thanks to those parents who have paid for their child/ren's stationery so that they are already using their books for learning from this week. If you wish to purchase your stationery from school please give your order directly to your child/ren's teacher so that it can be recorded by the classroom teacher in their finance book before sending it along to the office for processing. Thank you.

School Trips, Performances and Visits

To minimise the number of times that the school requests permission slips and money from parents for these experiences, we are requesting parents/whanau to sign a generic permission slip and pay an amount per term to cover the costs...rather than to do this several times during the year.

Please find attached to this newsletter a notice with further details and the permission slip - it is one that will last for the time that your child is at Bellevue School. Please note that trips, performances and visits for your child will be advertised in advance so that you can notify the school if you do not wish them to attend, and should you require a refund for the cost.

In Term 1 the School Picnic is the first trip which is in a fortnight's time. If it is unable to go ahead due to the weather then an alternative trip or performer will be arranged. Please find the permission slip and the notice for the School Picnic attached to this newsletter.

Term Dates 2015

Term 1: Monday 2 February - Thursday 2 April (open)
Waitangi Day- Friday 6 February (School closed)
Teacher Only Day - Monday 16 March (School closed)

Term 2: Monday 20 April - Friday 3 July (open)
Monday 27 April - Anzac Day Holiday
Queen's Birthday holiday - Monday 1 June (School closed)

Please note the change Tuesday 2 June (see below)

Term 3: Monday 20 July - Friday 25 September (open)

Term 4: Monday 12 October - Wed 16 December (open)
Labour Day- Monday 26 October (School closed)

Dates to Note

Please note

From 2014 both Waitangi Day and Anzac Day were 'Monday-ised', which means when they occur on a Saturday or Sunday, there is a public holiday on the following Monday. Therefore the school is also closed on 27 April (Term 2).

On Tuesday 3 June the school **is open for instruction**. At the end of last year we advertised this as a Teacher Only Day, however the teachers are going to attend a course for the Teacher Only Day during the July break instead. Consequently Tuesday 5 June is a day when the school is open as usual for learning for your child to attend.

The school will hold their annual whole-school Emergency Evacuation on Friday 30 October this year. In response to feedback from last year we are letting people know now so that parents/caregivers have advance warning. As a school and community we need to be aware that an emergency could occur at any time, and as such this whole school evacuation is one way that the school prepares for this. At the beginning of each year it is always helpful for parents to check their emergency release adult list is current, just in case there should ever be the need to evacuate the school.

Invitation - Welcome Powhiri

Haere mai koutou

You are warmly invited to join us in the school hall at 10:45am next Wednesday (11 February) for a special welcome to our new teachers, students and their families.



School Lunches

The first day for **Monday school lunches** is next week, Monday 9 February. Lunch orders should be written on the front of an envelope with your child's name and room number and payment enclosed. It needs to be put into the class lunch box as soon as your child arrives at school. Lunch menus are available at the school office.



Safety To/From School - Please Help

Important
to Know

ROAD PATROLS

This year a School Patrol (Kea Crossing) will be operating on Bancroft Terrace. The Kenmore Street pedestrian crossing is available for those who cross there. Thank you to the parents who have offered to assist Margaret/Karen and will be supporting our trained Road Patrol students on crossing duty. We appreciate this donation of services to help.

To assist the safety of people before and after school we ask everyone to use the pedestrian gate/entry to the school. There is no vehicle entry to the school carpark when the Road Patrols are in operation

PLEASE

Remember that on very windy or blustery days, it is not safe for the Road Patrollers to use the 'lolly pop' signs as students may be dragged on to the road by the wind. On these windy days a staff member will assist the adult who is rostered for Road Patrol. These two adults will be wearing the high visibility coats and be using their arms instead of the signs.



SCOOTERS, BIKES, SKATEBOARDS - WHEELS TO SCHOOL

Please note that if your child is riding wheels to school - they must wear a safety helmet as a Health and Safety requirement. Our new locking scooter racks are located on the quad area/netball court for all students to park their scooter when they arrive at school. It is locked at 9:05am/unlocked at 2:55am by our bell monitor each day.

Children may bike to school if they are a Year 5 or Year 6 student on receipt of written permission from their parents/whanau. Bikes are locked to the fence outside the staffroom during the day, with the student's own lock.

PLEASE....

To protect everyone's safety in the school grounds we ask you to help remind child/ren that bikes/scooters/skateboards/wheels are not ridden in or through the school grounds during the busy times from 8:30am - 3:30pm, unless there is as a special event or supervised 'wheels day' activities.

SCHOOL CARPARK

Due to the limited space available and the entry/exit safety issues in the school car park, we ask parents to refrain from using these parks during school hours. If you have a health issue and require entry via the car park or need to use a park during the day, please contact the school office to arrange this.



Class Organisation 2015

We hope that everyone is finding their rooms with the renumbering. Each class has their number displayed in the window to help us adjust to the new names.

Room 1

- New Entrant/Year 1 - Anne Smith

Room 2

- New Entrant/Year 1 - Lesley Waite

Room 3

- Year 1/2 - Anne Gullen &
Kathryn Charlesworth

Room 4

- additional teaching space

Room 5

- Year 1/2 - Emma Cummings

Room 6

- Year 2 - Philippa Rogers -

Room 7

-additional teaching space

Room 8

- Year 3/4 - Anna Borrer

Room 9

- Year 3/4 - Fiona Campbell

Room 10

- Year 3/4 - Hilary Lintott

Room 11

- Year 3/4 - Andy Groom

Room 12

- Year 5/6 - Deeann Daniels

Room 13

- Year 5/6 - Andy Yates

Room 14

- additional teaching space

Room 15

- Year 5/6 - Maria Church

Also the 'Old Dental Clinic' is now called *Whare Iiti* (the small house) as it is a few years since it has been used as a Dental Clinic. *Whare Iiti* is a space that is used for learning groups, teacher planning and meetings.

From this year each block is named after one of the four winds. The Papakainga o Paparangi is called *Nga Hau e Wha* (the four winds) so we have used the four winds to name our four areas in the school.

Juniors

Te Hau **Rawhiti** - the **East** wind

Middles

Te Hau **Tonga** - the **South** wind

Seniors

Te Hau **a Uru** - the **West** wind

Administration/Office/Staffroom

Te Hau **Raki** - the **North** wind

Staff Names

In schools we work to involve students and staff in learning programmes that encourage people to follow their passions, also to provide some individual choice.

This year staff have chosen the name that they prefer students to call them at school. These are as follows:-

Teaching Staff

Karen Hardie	- Ms Hardie
Margaret Hesketh	- Margaret
Anne Smith	- Mrs Smith
Lesley Waite	- Mrs Waite
Anne Gullen	- Mrs Gullen
Kathryn Charlesworth	- Mrs Charlesworth
Emma Cummings	- Emma
Philippa Rogers	- Mrs Rogers
Anna Borrer	- Anna
Fiona Campbell	- Fiona
Hilary Lintott	- Hilary
Andy Groom	- Andy
Deeann Daniels	- Deeann
Andy Yates	- Mr Yates
Maria Church	- Mrs Church

Support Staff

Michele Clarke	- Mrs Clarke
Amanda Beauchamp	- Mrs Beauchamp
Trish Boswell	- Mrs Boswell
Carlos Diaz	- Carlos
Mandy Toms	- Mrs Toms
Lin Latorall	- Lin
Lovina Barlett	- Mrs Bartlett
Shay Waikawa	- Shay
Jan Virtue	- Jan
Kirsty Walker	- Kirsty

Summer Reading

Thank you to all those students who borrowed for Summer reading.

All books have been returned on time.

Kapai Kidz

Operates from 7.30am - 8:30am for before school care, and 3:00 pm - 6.00pm for after school care.

All enquiries to Linda Robinson on 021 409641 or 973 5099 or Linda @kapaikidz.co.nz.

Community Notices

Girl Guides - Join the Fun:

All girls 5-13 years are invited to join us at Girl Guides.

Current meeting times for units:

***Pippins (5-7yrs)** Saturdays 10.30 – 11.30am at the Baptist Church Hall, Newlands

***Brownies (7-10yrs)** Mondays 6.30 – 8.00pm at Paparangi School Hall or Tuesdays 6-7.30pm at St Oswalds, Newlands

***Guides (10-13yrs)** Tuesdays 6.30-8.30pm at the Baptist Church Hall, Newlands or Wednesdays 7 – 8.30pm at Paparangi School Hall

Girl Guide biscuits will be on sale from 28 February 2015.

Any Queries email sbrockie@xtra.co.nz or phone 4787638.

The Music Learning Centre in Tawa has vacancies for piano students.

Craig Utting (M.Mus., LTCL) is a professional composer, pianist, violist and typesetter (in Sibelius).

Email: info@musiclearning.co.nz –

Web: www.musiclearning.co.nz –

Ph: 04-232-1231 – Mob: 027-630-7435

New Music Studio in Robert Street, Newlands.

Walking distance from school!

Katrin Eickhorst (BMus, GradDip teach, Dip RST)

Tabea Squire (BMus, GradDip, Hons):

Two highly qualified and internationally experienced music teachers offer tuition in:

Violin (beginner to advanced)

Cello (beginner to advanced)

Recorder (beginners to advanced)

Keyboard skills (beginner)

Music theory (beginner to advanced, incl.

NCEA tutoring)

Composition

Vocal training (beginner)

Chamber music: formation, sourcing of repertoire, coaching, mentoring

We draw from a combined practice record of over 20 years teaching' at:

New Zealand School of Music ,

New Zealand secondary schools, Champs,

Young Musicians Programme of NZSM,

Hawkes Bay Orchestra "Or-ches-trate"

Contact: the studio on 04 970 9385,

studio.es.wellington@gmail.com

DancePointe Academy New Beginners Ballet class for 5 and 6 yr olds commencing Term 1 2015 in Johnsonville and Churton Park. Limited spaces available in classes of higher levels. For information with regards to levels/fees/uniform/enrolment/trial class – Contact Sharon: dancepointenz@gmail.com

www.dancepointe.co.nz

021 2151222