



# Weekly Newsletter

11 February 2015

Ko te tamariki te uptake o te kaupapa  
= The child is the heart of the matter

Term 1 - Issue 2

## Important Dates

Thursday 12 February	'Meet the Teacher' Evening for Parents/whanau and students - 6:00 - 7:30PM
Friday 13 February - Friday 27 March	Weekly swimming lessons
Wednesday 18 Feb	First school assembly (on Wed in Term 1 as swimming on Fridays)
Thursday 19 February	BOT meeting—7:00pm in staffroom
Thursday 12 March	School Photos
Monday 16 March	Teacher Only Day - <b>School closed</b>
Thursday 26 March	BOT meeting—7.00pm in Staffroom
Thursday 26 March	Bellevue School Athletics
Thursday 2 April	Last day of Term 1
3 - 19 April	Easter and school break
Monday 20 April	9:00am - Term 2 begins
Thursday 30 April	Bellevue Cross Country
Tuesday 19 May	Northern Zone Cross Country
Friday 3 July	Last day for term 2

## Assembly Dates

18 Feb - 2:15pm	Rooms 6 & 8
4 March	Rooms 10 & 15
18 March	Rooms 13 & 5
1 April	Rooms 12 & 1

## Welcome

### Haere mai ki te kura o Bellevue

We would like to welcome Katherine Ruyters to Room 1 and to the Bellevue School community:

A special welcome to our school learning community to you and to your whanau/family.



## From The Principal's Desk

*Kia ora, Nameste, Talofa, Konnichiwa, Guten Tag, Gidday, Vannakkam, ni Hao, Kia orana, Hola, Salam, Sa wat dee kha, Dia Dhuit, Goeie Dag, Bonjour, Hello, (please let us know the greeting in your language if it is not here)*

NZSL We hope that your child/ren have had a great start to the year and are settling into their new classroom and learning programmes. We are looking forward to catching up with you at the 'Meet the Teacher' evening this week - ie: on Thursday 12 February. Please note that these meetings are a great way for you to meet your child's teacher and other parents too. The details of the times and location for each meeting can be found later in this newsletter.

Although school starts at 9:00am we ask children to arrive at school between 8:30am - 9:00am so that they can greet their teacher/friends, organise and prepare themselves for their day of learning. We ask that students are not at school before 8:30am so that teachers can get prepared for the day of learning. Teachers are in and around their classrooms from 8:30am so are available to students and their families from then. If required please contact Linda at Kapai Kidz for a before school programme in the school hall which releases your child at 8:30am.

School times are:- 8:30am - students may start arriving at school, 9:00am - school starts, 11:00am - morning break/playtime, 12:30pm - lunch break/playtime, 3:00pm - end of school day.

Next Thursday is our whole school picnic which is looked forward to. Please check that you have returned your generic permission slip for school trips, performers and visits by next Wednesday as we require these for everyone attending, also the \$10 to cover this term's trips, performances and visits. If the weather is terrible and the picnic cancelled, there will be an alternative trip, performance or visit organised for Term 1. We will keep you informed about this trip/event should the weather turn nasty for the school picnic next Thursday.

Please remember to keep in touch with your child's teacher and the school. The school is keen to work closely with you to promote the best possible learning experiences and opportunities for your child/ren. As teachers, we are very aware that we learn with, from and about our students as we actively seek to increase connections and their sense of belonging in our learning community. The concept of ako (learning from each other) is valued in our work with you and your children. We look forward to seeing you all on Thursday evening. Have a great week.

Ka kite,



Karen



## Character Education

The value that we are celebrating and encouraging everyone to further develop this term is **Honesty/Pono-nga and Truthfulness /Whakaata-pono.**

When we practice honesty and truthfulness we:-

- ♥Do the right thing
- ♥Follow through with what we say we will do
- ♥Do not take things we do not deserve eg: praise, credit for ideas, money
- ♥Are sincere and mean what we say
- ♥Show others the real us ie: we don't exaggerate or pretend to be someone we are not

Honesty and truthfulness to help us to see and experience things as they are ie: without distortion, wishful thinking avoidance or denial. When talking about honesty there are challenges involved in the struggle we all face in being honest when we make mistakes. One way of talking with children about this is that even though it is hard to admit when we have done something we wished we had not - when we tell the truth (no matter how hard that is) it helps to solve the issue. If we are dishonest or do not admit to these mistakes, often it makes the problem a bigger one to solve. At school we acknowledge when children tell the truth, rather than try to cover up mistakes. We know that we all make mistakes and that making them provides us with further opportunities to learn.

## Kupu Hou (word of the week)

**Kaukau** = to swim or to bathe

**Pronunciation** = cow-cow

I *kaukau* ngā tamariki i te whanga.  
The children *bathed* (swam) in the bay.

E mōhio ana koe ki te *kaukau*?  
Do you know how to *swim*?



## Sunhats at School

A reminder that in Term 1 and Term 4 each year students need to wear a sunhat when outdoors. Please check your child has a named sunhat at school each day. They may also wear sunglasses and sunblock.

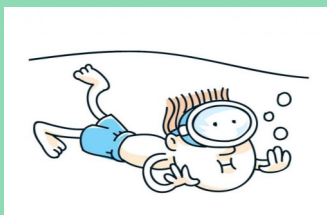
We encourage everyone to do this to protect themselves from harmful UV rays when outside at school during the summer months.

## Swimming 2015

Swimming lessons are on Fridays starting this Friday - ie: 13 February.

Unfortunately we are unable to accept any further registrations for swimming this year as enrolments closed last week.

If enrolled your child will need to bring their togs and towel each Friday. If your child does not attend swimming lessons they are participating in an alternative physical education programme at school.



## Clothing and Belongings

Please make sure that all your child/ren's clothing items, bag, books and belongings that they bring to school are clearly named. This enables us to return items that may have become separated from their owners, rather than them collecting in a pile that is then taken to a charity shop at the end of each term.



## School Trips, Performances and Visits

Please note that this year we request parents/whanau to sign a generic permission slip and pay \$10 per term to cover the cost of school trips, performances and visits. If you have not already done so please can you return the permission slip and money for Term 1 as next Thursday is the school picnic.

We hope that minimising the number of times that the school requests permission slips and money from parents for these experiences makes this more manageable for families. It also enables the school to budget for and prioritise the trips, performers and visits we undertake during each term.

Please find attached to this newsletter the permission slip - it is one that will last for the time that your child is at Bellevue School. This slip can also be located on the school's website.

## Term Dates 2015

**Term 1:** Monday 2 February - Thursday 2 April (open)  
Monday 16 March - Teacher Only Day (School closed)

**Term 2:** Monday 20 April - Friday 3 July (open)  
Monday 27 April - Anzac Day Holiday  
Monday 1 June - Queen's Birthday holiday (School closed)

**Please note that school is open for instruction on Tuesday 2 June**

**Term 3:** Monday 20 July - Friday 25 September (open)

**Term 4:** Monday 12 October - Wednesday 16 December (open)  
Monday 26 October Labour Day - (School closed)  
Wednesday 16 Dec—last day of term (School closes 12:30pm)

## Important Notices

Please note that on Tuesday 2 June the school **is open for instruction**. At the end of last year we advertised this as a Teacher Only Day, however the teachers are now going to attend a course for the Teacher Only Day during the July break instead. Consequently Tuesday 2 June is a day when the school is open as usual for learning.

This year the school's whole-school Emergency Evacuation is on Friday 30 October. In response to feedback from last year we are letting people know now so that parents/caregivers have advance warning.

While an emergency could occur at any time, this evacuation is one of the ways that the school prepares should this occur during the school day. Please check that your emergency release adult list is current, and that your emergency release adults are likely to be close by (rather than the other side of the gorge) just in case there should ever be the need to evacuate the whole school.



## Meet The Teacher

We are looking forward to catching up with you and your children at school tomorrow. If it is a lovely evening please feel free to bring a picnic and have dinner in the school grounds before the meetings. You may also like to come to the staffroom and help yourself to a cuppa if you are waiting between 6:30pm to 7:00pm meetings.

Meetings begin at 6:00pm with Te Hau **Rawhiti** (Juniors) meeting in the hall. Please note that we can not enter the hall until 6:00pm as Kapai Kidz does not finish until then.

Meetings are located as follows:-

6:00 - 6:25pm - Te Hau **Rawhiti** (Juniors) (Room 1 - 6) in hall  
6:30 - 6:55pm - Te Hau **Tonga** (Middles) (Room 7 - 11) in Room 11  
7:00 - 7:25pm - Te Hau **a Uru** (Seniors) (Room 12 -15) in Room 14

We hope that you can make this great opportunity for your child to introduce you to their teacher and for you to find out more about what is happening and what is expected in their class this year

All teachers are at school in their rooms between 6:00pm and 7:30pm for you to talk with before or after your 'Meet the Teacher' time.

## Scholastic Bookclub

Scholastic Brochures were given out to classes on Monday.

Bookclub orders from these are due back to school by Thursday 19 February. Unfortunately late orders cannot be accepted as once the order is processed/sent we are not able to put in further orders. Therefore please get your orders in before 19 February.

Payment for orders can either be by cash, credit card (details are to be included on your Bookclub form) or by cheque. If you are paying by cheque please make it out to Scholastic Bookclub. Please give your order directly to your classroom teacher so that it can be recorded by the classroom teacher in their finance book before sending it along to the office for processing.



## Safety To/From School - Please Help



Be Safe

### Bancroft Street Parking

Please do not double park or park on the yellow lines outside the school as this inhibits the Road Patrollers view and causes a safety concern outside the school.

A reminder also to drive up to the top of Bancroft Terrace to turn around, rather than risk hurting people trying to turn into driveways as students/whanau are walking to and from school.

To assist the safety of people before and after school we ask adults and children (ie: everyone) to use the pedestrian gate/entry to the school. Please enter and leave the school using the footpath. Do not walk through the carpark area as you drop off or pick up your children as often there are cars entering and leaving. Even though there is no vehicle entry to the school carpark when the Road Patrols are in operation we ask that you model safe behaviour by using the pedestrian footpath at all times when coming into or leaving the school.



### SCOOTERS, BIKES, SKATEBOARDS - WHEELS TO SCHOOL

Please note that if your child is riding wheels to school - they must wear a safety helmet as a Health and Safety precaution.

To protect everyone's safety in the school grounds we ask you to help remind child/ren that bikes/scooters/skateboards/wheels are not ridden in/through the school grounds during the busy times from 8:30am - 3:30pm, unless there is a special event or supervised 'wheels day' activities.



### SCHOOL CARPARK ....

A reminder - Due to the limited space available and the entry/exit safety issues in the school car park, we ask parents to refrain from using these parks during school hours. If you have a health issue and require entry via the car park or need to use a park during the day, please contact the school office to arrange this.





## Library

The Library is now open for student borrowing and classes are time-tabled to visit the library each week:

Monday: Rooms 3 & 12

Tuesday: Rooms 10, 11, 8, 9, 2 & 1

Wednesday: Rooms 5 & 6

Thursday: Room 13

Friday: Room 15

These times may change occasionally to accommodate other programmes.

Children in the Te Hau **Rawhiti** (Juniors) are issued with one or two books at their teacher's discretion. Students in the Te Hau **Tonga** (Middles) and Te Hau **a Uru** (Seniors) classes may borrow two books for two weeks. Books are returned via the classroom, on or before the date stamped on the slip in the back of the book. We do not have fines for late returns, but ask that out of consideration for other borrowers books are returned on time and in the same condition as when they were issued.

Library books are to be carried to and from school in a waterproof library bag to protect them from rain, food, craft materials, etc. If needed, library bags can be purchased from the school office or from discount stores. At home, please find a place to keep books safe from younger children and pets.

Occasionally accidental damage does occur – **please do not repair books at home** as we use specialized library materials for mending. It would be helpful to mark the damaged page with a slip of paper and ask your child to point it out to the teacher when returning the book. A charge may be made for avoidable damage and lost books.

Please help your child to care for their library books by handling them with clean hands, turning pages from the corners and keeping them in a safe place.



## School Rules

Any rules we have at school are designed to enable everyone to feel safe and be safe at school. We encourage everyone in our learning community to look out for others and treat each other well - both children and adults.

**At Bellevue School we respect, share and care for all people and property.**

**Everyone has the right to be respected, safe and to learn.**

The language we use and guiding principles for talking about managing behaviour include:-

- 😊 Be kind
- 😊 Be respectful
- 😊 Be Honest
- 😊 Be safe

## Te Puawai Amua

Kapa Haka begins again next Monday (ie: 16 February) in the afternoon. This year we are starting a junior Kapa Haka group from 1:35 - 1:55pm. For the first two weeks all Rooms 1 - 6 will be going to this so they know what this is about before having the opportunity to choose to take part in this for the remainder of the term. Te Puawai Amua meets in the hall following junior Kapa Haka ie: 2:00 – 3:00pm. Kia ora Shanelle.



Bellevue School  
Bancroft Terrace  
Newlands 6037  
Wellington

Phone: 04 478 7037  
Fax: 04 477 3945  
E-mail: principal@bellevue-  
newlands.school.nz

## Bellevue School

e tipu e ako  
where learning grows

We are on the web

www.bellevue-  
newlands.school.nz

## Community Notices

### Learn Rhee Taekwondo:

The **safe, fun and challenging** way for all the family to learn skills, get fit and gain confidence with a splash of discipline and respect!

Celebrating its 39 year anniversary in NZ lead by World Master Chong Chul Rhee  
**Amesbury School Hall, Churton Park:**  
Mondays 6.30pm - 7.30pm

**Johnsonville Community Centre Hall:**  
Tuesday and Thursdays 6.00pm - 7.00pm  
First three lessons **free** - try before you pay anything. Fees from **only \$11** per week all inclusive.

**Contact:** Gareth on 021 364314 or email  
gareth@rheetaekwondo.org.nz  
<http://www.rheetaekwondo.org.nz>

### North Wellington Junior Football Club:

Registrations are now open for children who would like to play at the North Wellington Junior Football Club, on the following link:

<http://www.northwellingtonfootball.com/juniors/registration/>

The football season commences on Saturday 18 April. Trials for 9 - 14 grades (children turning 9 - 14 this year) will be held on Sunday 8 and Sunday 15 February at Alex Moore Park. Children wishing to attend trials will need to be pre-registered by Thursday 5 February.

Please contact the Club Manager on [administrator@northwellingtonfootball.com](mailto:administrator@northwellingtonfootball.com) for queries or come down and see us at our trial days if you would like to know more about the Club.

### Stellar Fitness Lose-Weight for Winter 12 Week Weight Loss Challenge:

Join the Weight Loss Challenge where you can lose weight and win cash. Prizes are paid to the 3 biggest losers based on the % of weight lost. Why not shape up and cash in?

This challenge is designed for women in the community who want to either lose weight, lead a healthier lifestyle, or want to maintain weight loss that has already been achieved. Whether you are just starting out on your weight loss journey, or just want a little extra motivation losing the extra couple of kilos, this challenge can help you get there! It's never too late to start on your New Years Resolutions!! Next Summer's bodies are created NOW!!

**Only \$35 for the whole 12 weeks!**

**STARTS: Monday, 23 February**

**More information/to register:**

**[www.stellarfitness.co.nz](http://www.stellarfitness.co.nz)**