



# Weekly Newsletter

27 November 2019

He taonga rongonui te aroha ki te tangata = Goodwill towards others is a precious gift

Term 4 - Issue 7

## Important Dates

Thursday 28 November	Dental Van visiting school for the day
Thursday 28 November	Board meeting - in staffroom at 7:00pm
Friday 29 November	All Bell Challenge work shared with class teacher by today
Friday 6 December	Fundraiser's Pizza Lunch
Friday 13 December	- Helpers morning tea - 10:30 - 11:30am - Festive Bake Sale & Sausage Sizzle 3:00pm
Monday 16 December	Year 6 Leavers dinner
Wed 18 December	- 11:30am Final Assembly and Farewell to Year 6 students - Last day of school year - 12:30pm finish

## From The Principal's Desk



Kia ora, Nameste, Talofa, Konnichiwa, Guten Tag, Gidday, Vannakkam, ni Hao, Kia orana, Hola, Salam, As-salaamu 'alaykum Sa wat dee kha, Dia Dhuit, Goeie Dag, Bonjour, Hello, (please let us know the greeting in your language if it is not here)

NZSL

Happy Diwali to all of you who are currently celebrating this special occasion. Diwali, Divali, or Deepawali is the Hindu festival of lights which typically lasts five days.

Also, please note that all donations for 'Pack The Bus' need to be at school by next Monday 2 December. Thank you to our councillors who are encouraging us to think of others at this time of year, and those of you who have already sent along a donation to this worthy cause. Pack the Bus is another way that we can practice manaakitanga, aroha and empathy by considering others at the end of the year. Kia ora koutou to our Student Council for this initiative. Students are encouraged to wear something festive or sparkly on Monday to greet the Pack the Bus visitors eg: - a Christmas hat, earrings, headband.

## Term 4 Assembly Dates

Friday 29 November	Te Puawai Amua/Choir - 2.10pm
Friday 13 December	Presentations - 2.10pm
Wed 18 December	Final Assembly - 11.30am

Remember that on Friday 13 December (from 10:30 - 11:30am) the staff warmly invite everyone who has helped the school this year to come along to a morning tea in the hall to acknowledge our appreciation for your support. Invites are coming home this week so please look out for these. Just in case your invite gets lost or missed, please put the date in your diary or on your calendar so that you join us at 10:30 - 11:30am that day to join the staff for a special morning tea to say thank you for your support during 2019.

Nga mihi nui

From Karen 😊  
and the Bellevue School Team

Remember the Bake Sale  
and Sausage Sizzle  
after school  
on Friday 13 December

## WELCOME

### Haere mai ki te kura o Bellevue

Welcome to the following student and their family/whānau. It is great to have you in Bellevue School's Learning Community.

Milo Sleep in Room 1.



## Character Education

*"Confidence comes  
not from always  
being right but  
from not fearing to  
be wrong."*

inspiration800.com

As we focus on nurturing māia or confidence this term, it is exciting to see students use courage to try new learning activities, to make mistakes and then use these as opportunities for further learning.

Many of the children have made comment in their written reports that they know how important it is to try new things and their understanding that they probably will not get these right on their first try... and that this is perfectly OK. This knowledge that effort and trying new strategies to persevere to succeed is what a growth mind-set is all about; and is what learning is about too. It is this knowledge that also helps us to have confidence in ourselves and in what we do. It is when we fail or we listen to feedback to improve what we do, that we need to demonstrate confidence to enable us to try again or keep going until we achieve to a higher level.

Hub 5 students experienced this recently when undertaking then sharing their Passion Projects, also when writing and presenting their speeches.

## Kupu Hou (new word)

**tekoteko** = carved figure at the apex of the meeting house

*pronunciation = teh-kor-teh-kor*

Ko te **tekoteko** te whakairo kei te tāuru o te whareniui.  
The **tekoteko** is the carving at the top of the meeting house.



## Thank you

### Special thanks to...

Will Graham and Quinn Murdoch who represented us so well at the Newlands Speech Celebration last week.

The Year 4-6 students who made it into the Inter-zone Athletics yesterday. Thank you Will, Jacob, Ethan D-G, Seren and Phoebe who were great athletes and represented Bellevue well at this event.

All those people who have already donated goods for Pack the Bus next Monday.



## BELL Home Learning Challenge

Many students have been working away all year on the Bellevue BELL Home Learning Challenge. Finished portfolios showing evidence for all completed challenges need to be brought in and shared with your classroom teachers by **this Friday 29 November**.

Every completed challenge needs to be signed off by the student, parent and teacher.



## Road Patrols in 2020

For 2020, we require support for these new Road Patrol teams in the mornings from 8.25 - 9.00 am, and/or afternoons from 2.50pm - 3.15pm.

If you are available any day of the week at these times and would be willing to help our student leaders keep our tamariki safe as they journey to and from school next year, please get in touch in Term 4.

Please contact Deeann Daniels by giving the office a call or at:

[deeann@bellevue-newlands.school.nz](mailto:deeann@bellevue-newlands.school.nz)



## Enrolment Information - Zoning

### Important information about the adoption of the enrolment scheme (zone):

If you have pre-schoolers at home that you are planning to enrol at Bellevue School in the future, here are a few important things to know and put into action:

**If you are living outside of the Bellevue School enrolment zone, then your pre-schooler(s) will need to be processed as an out of zone application.** Please let us know, if you haven't already, of any future enrolments at Bellevue School from your family. It helps greatly with our planning to know well in advance. And if we know then we can also prompt you as to when you need to get your out of zone application in.

**Even if your pre-schooler(s) are in zone, please get your paperwork in to us as soon as possible to enable us to plan ahead.** We need this information to be able to work out how many out of zone applications we can accept in each enrolment period.

If you have any questions or are unsure about anything, please call or come into the school office and talk to Amanda.

## Sports News

### Inter Zone Athletics

Congratulations to Jacob, Ethan D-G, Seren, Will and Phoebe who represented Bellevue School at the InterZone Athletics event yesterday at Newtown Park. This event was held for the top performers at each zone event and represented schools from the wider Wellington region. Well done to all of the five athletes who were chosen to attend this event.

### Feedback from our athletes:

- \* We got to do different activities. It was great to watch other people do events we don't do at our athletics day like shot put and discus. It was really fun!
- \* It was exciting when we waited for our race.
- \* It was fun and all the people who went to InterZone loved it!

## A Request from Bellevue Kindergarten

Bellevue kindergarten have asked that if your children are playing in the kindergarten grounds after school that they be accompanied by a parent.

Can you please supervise your children and ensure that kindergarten property and equipment is used appropriately and kept safe.



## Library Donations

In previous years, some families of Year 6 leavers, and others leaving Bellevue School, have wished to mark their time here by donating a book to the library.

We are holding a number of fiction, non-fiction and picture books suitable for a wide range of ages and interests. We make these available for donation at about half the retail price. The cost to donors ranges from about \$7.00 - \$20.00.

A library donation plate showing the name(s) of the donor will be placed in the front of the book which will be available for borrowing by the donor after cataloguing and covering.

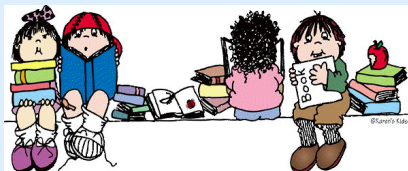
If you wish to make a donation to the library in this way, the books may be viewed at the school office.

Thank you to those families who have already made a donation to the library.



## Donation to Library

A BIG THANKYOU to Alana Haines for a comprehensive and incredibly generous donation of picture books to our school library.



## Sunhats



Remember that your child needs a sunhat at school every day during Term 4 and also Term 1. It is compulsory to wear a sunhat when outside during the summer months for protection from the sun's harmful rays.

Please help your child to have a named sunhat at school each day. They may wish to have a school sunhat that they leave at school. If your child does not have a sunhat next term they will need to work and play under the covered veranda areas.

## Carpark

Please do not use the carpark as a pedestrian to enter or exit from the school. The people currently doing this are placing themselves and others at risk. We may have to use a lock on this gate while road patrols are on duty to enable our students and road patrol adults to focus on their job, rather than explain to people why it is not safe for them to be using the vehicle entry at this time.

Please, please think of your safety and the safety of our children.



## Pack the Bus

The Student Council are joining with the City Mission and The Breeze again this year to think of others less fortunate at Christmas. **This year the bus comes to Bellevue on Monday 2 December.** That means only a few days left to organise a little something for another child or family at Christmas

We encourage our students and learning community to practise empathy and manaakitanga by donating a little something to help children and whānau less fortunate so that their families can have a more enjoyable festive season.

The Student Council invites you to send along new toys, games, books, board games, art equipment, vouchers, cans of food or festive food to place under the tree at school. A list of suggested items from Wellington City Mission is included below.



### Essential Items:

Spreads and Muesli bars  
Weetbix, Oats & Muesli  
Sugar and Milk Powder  
Pasta Sauce  
Tinned Soup/fish/meat  
Biscuits and Crackers  
Body Wash and Deodorant  
Baby Food, Wipes and Nappies  
Laundry Powder and Dishwashing Liquid

### Christmas Items:

Small Christmas Cakes  
Fancy biscuits/crackers  
Fancy relishes/sauces  
Salts/roasted nuts  
Chippies  
Toiletries for the whole family  
Retail vouchers

### Toys: (new toys only please - and unwrapped)

Construction Toys - Lego/Meccano  
Art equipment  
Educational toys and books  
Puzzles  
Baby toys for 0-2yr olds  
Diaries/Calendars  
Board games



If you wish your child to place the item your family/they have donated on the bus, please put their name and class number on this gift but please do not wrap the gift (a request from the organisers).

### Please note

The Christmas tree is now in the foyer so please place any gifts you are donating or non-perishable food and festive food under the tree. **There is only two-three days left for you to bring along your gifts (marked or unmarked as mentioned above) to place under the tree.**

Thank you in advance from the School Council, The Breeze and The City Mission for thinking of others and practising empathy, aroha and compassion for those less fortunate.





## Swimming Feedback



If you are a parent/whānau of a child from Room 2, 3, 4, 5, 6, 10/11A, 10/11B or 10/11C who is currently going swimming or has just finished swimming this term, you are invited to fill in the survey that was attached to the newsletter last week by the end of next week ie: **by 3:00pm on Friday 6 December.**

At the end of swimming lessons each year, we ask our teachers, students and their parents/whānau for feedback to help us and the pool providers to improve what we are doing for our students learning.

Please note that your feedback will be combined with the feedback from parents/whānau in our senior school area ie: Hub 5. This feedback was returned earlier this year after they completed their swimming lessons in Term 2. The combined feedback is considered by our staff for how we might improve the provision of swimming lessons for Bellevue students in the future.



## End of Year Reports

With the removal of National Standards, this is a timely reminder that we now report against National Curriculum Levels as indicated by this chart (NB:- this chart is also on the front of your child's written report).

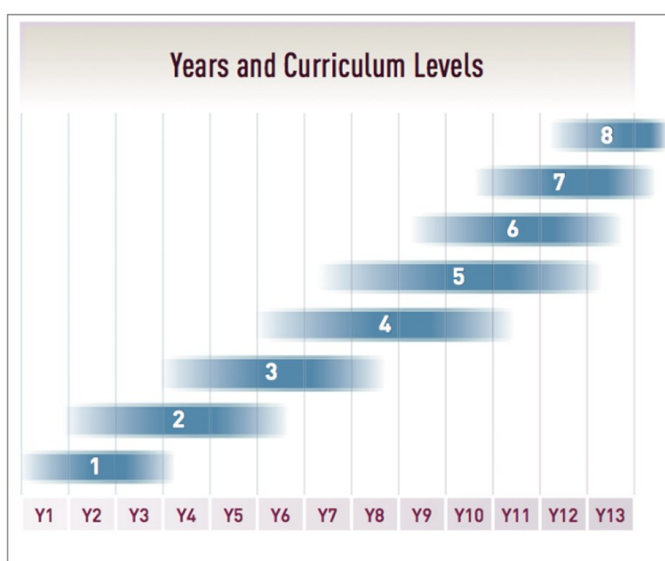
Please note that the language used in reports reflect the change to reporting against the curriculum level too. The code for 'Achievement against expected curriculum level' in each of the subject areas (Reading, Writing and Mathematics) now indicates whether your child is:

**WT** - Working towards the expected curriculum level

**WW** - Working within the expected curriculum level

**WA** - Working above the expected curriculum level

You will see these codes **WT** and **WW** and **WA** in your child's written report that is coming home to you on Wednesday 11 December.



## Term Dates 2020

**Term 1: Monday 3 February – Thursday 9 April**

Waitangi Day – Thursday 6 February

Easter Break (during holiday break)

Anzac Day – Monday 27 April

**Term 2: Tuesday 28 April – Friday 3 July**

Queen's Birthday – 1 June

Teacher Only Day -2 June

**Term 3: Monday 20 July – Friday 25 September**

**Term 4: Monday 12 October – Wednesday 16 December**

Teacher Only Day – Friday 23 October

Labour Day – Monday 26 October



## Pizza Fundraiser

At the end of each term our wonderful FUNdraisers group organise with Hell's Pizza, an opportunity for you to order pizza lunch as a special treat for your child/ren.



The last Pizza Fundraiser for the year will be on Friday 6 December. Order forms were sent home on Monday 25 November. **All orders need to be into the school office by 9:00am this Friday 29 November** so they can be processed and the pizzas ordered for the following Friday. Please note one order form for each child is required.

Please put order forms and money in the money box in the office foyer. We are unable to give change and any overpayment will be accepted as a donation.

Due to the large number of orders we can only accommodate genuine dietary requirements (dairy-free or gluten-free), not preferences like BBQ sauce.



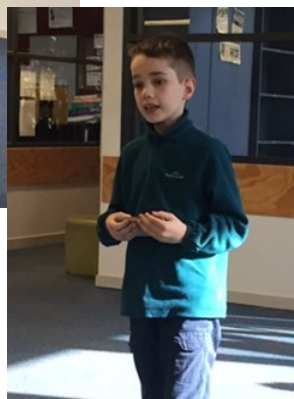
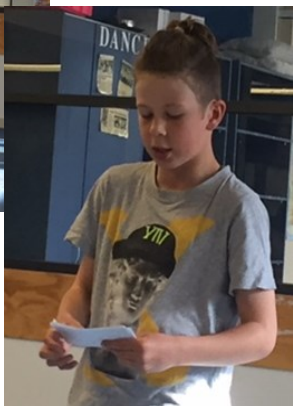
A special thanks to all those people who come along to process the orders, count the funds and make sure that the correct order goes to each student.

The funds raised will go towards the Jubilee Corner.

## Newlands Speech Celebration

Congratulations to Quinn Murdoch and Will Graham who demonstrated courage and confidence when they presented their speeches at the Newlands Speech Celebration at Newlands Intermediate School last week. Also to their respective families/whānau who came along to support them at this event.

Kia ora koutou and well done boys.

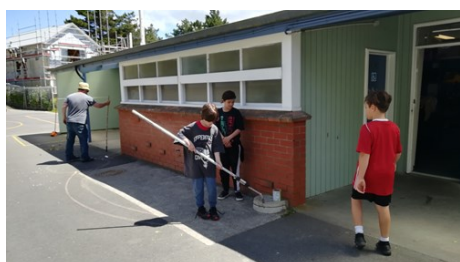
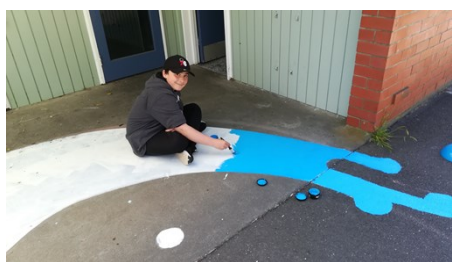


## Creative Minds Sensory Pathway

Work has begun on the Sensory Pathway in Hub 5!

Over the course of the year a small group of Hub 5 students have been working collaboratively on an exciting project. They had heard about how 'Sensory Pathways' can be helpful for students to calm themselves and re-focus for learning. They have researched these pathways in other schools and surveyed the Hub 5 students to find out what helps them to calm themselves. Finally, they explored what would be needed to create their own and the cost involved. At the end of Term 3 they presented their research and proposal to the Board of Trustees.

The Board kindly approved the project and provided the funds for the students to work alongside an artist, Dan Mills (<http://www.danmillspaintings.com/>) to paint the pathway (like a mural but on the concrete patios). Dan worked with the students last week to get them started and they have been getting busy this week adding the blocks of colour before Dan returns to help them with the details. Lots of messy fun!



# Community Notices

Community notices are included as space allows, and are limited to no more than 100 words. Every effort is made to present accurate information, however the Board does not accept responsibility for any inaccuracies. The Board is unable to accept responsibility for goods or services advertised.

## **School Holiday Computer Classes and Minecraft Parties**

Small classes for ages 5+ in Minecraft, Learn to Code in Scratch, Python or Java, Web Design, Animation, 3D Game Design and more. Also weekend 2½ hour Minecraft parties. For more details visit [grandtraining.co.nz](http://grandtraining.co.nz) or call 499-2211.

## **Artrageous Kids Holiday Programme**

Aimed at children aged 5-12 years. Our classes provide a space for all children to explore at their own pace; chaotic or careful, gingerly or with gusto, tiptoeing or tromping. Our aim is to draw out their creativity, not stuff things in! Find out more about us on our website [artrageouskids.co.nz](http://artrageouskids.co.nz).

**Bookings essential!**

**Creative Christmas programme: 16 – 23 Dec 2019**

**Summer Adventure programme: 6 – 31 Jan 2020**

**Venue: Poneke Dojo, Prince of Wales Park, Salisbury Tce, Mt Cook, Wellington**

**8.30am–3:00pm \$69 and after care 3:00pm-5.15pm \$15**

**Bookings available at [enrolmy.com/artrageous-kids](http://enrolmy.com/artrageous-kids)**



## **Kites at Christmas**

The Rotary Club of Courtenay Place is inviting children and families to a Kite Flying event at Liardet Park (Berhampore) on Sunday 15 December (10.a.m. to 2.00 p.m.)

\$5 per entrant. Prizes for construction, artwork and flying skills!

Come out in the fresh air and take advantage of our Wellington winds.

For more details check us out at [rcpp.org.nz](http://rcpp.org.nz), or ring Geoff Henry (3883536)



## **Holiday Programme – Drama Remedy**

We have an exciting line-up for your children over the Christmas (18<sup>th</sup>, 19<sup>th</sup> & 20<sup>th</sup> December) and Summer (16<sup>th</sup> & 17<sup>th</sup> January 2020) holidays. To find out more visit [www.dramaremedy.co.nz](http://www.dramaremedy.co.nz) Spaces are limited!

To enrol or for more details contact (04) 478 5962 or 022 027 3316 [dramaremedy@gmail.com](mailto:dramaremedy@gmail.com)

A beautiful opportunity for families and kids,  
to learn more about their Muslim friends!

## **Acceptance for Peace**

Quizzes, Free Face painting, Henna painting,  
Arabic calligraphy & delicious food.

Join us Wednesday 4<sup>th</sup> of December  
6:00-8:00 pm, in Johnsonville school hall.  
RSVP by 1<sup>st</sup> of Dec: [sherine.balaha@gmail.com](mailto:sherine.balaha@gmail.com)

