



# Weekly Newsletter

18 March 2020

Tē tōia, tē haumatia = *Nothing can be achieved without a plan and way of doing things.*

Term 1 - Issue 7

## Important Dates

Monday 2 - Friday 21 March	Māehe Manawa Ora - Moving March
Monday 16 March - Wednesday 25 March	Life Education mobile classroom is at Bellevue
Thursday 26 March	Bellevue School Athletics day - pp date later in the year - Juicies Fundraiser
Friday 27 March	- Wacky Shoe Day - Sausage Sizzle
Monday 30 March - Wednesday 8 April	Pedal Ready - Hub 5
Thursday 9 April	Final day of Term 1 - break includes Easter + Anzac Day
Tuesday 28 April	Teacher Only Day - for most Newland schools
Wednesday 29 April	First day Term 2 (Monday 27 April annualised Anzac Day + 28 April Teacher Only Day)
Thursday 30 April	FUNdraisers Meeting - Whare Iti 7pm
Thursday 11 June	FUNdraisers Meeting - Whare Iti 7pm
Tuesday 23 June	School Photo Day

## From The Principal's Desk



Kia ora, Nameste, Talofa, Konnichiwa, Guten Tag, Gidday, Vannakkam, ni Hao, Kia orana, Hola, Salam, Sa wat dee kha, Dia Dhuit, Goeie Dag, Bonjour, Hello, (please let us know the greeting in your language if it is not here)

NZSL

With the huge amount of information currently coming through about the Covid-19 virus it is up to us as adults to reassure our children that given the extremely low rate of infection in New Zealand - school is open and is a safe place to be.

We also need to be positive, encourage our children (and each other) to be forward looking and to keep on having fun. The following quote from Patch Adams is worth considering

"The reason **adults** should look as though they are having **fun**, is to give kids a reason to want to grow up."

With this in mind we are enjoying having Marsha Chiet, the Life Education Educator and Harold in our school over the next two weeks. If your child has visited the mobile classroom already, talk with them about what they have learnt and what they enjoyed the most about their visit.

Also coming up is Wacky Shoe Day, so you may wish to work with your child/ren on designing some minor adaptations to some shoes to wear to school on 27 March to celebrate a month of moving March. It has been really exciting seeing our students embrace this Greater Wellington promotion by walking or wheeling to school each day. The amazing number of scooters in the rack this week is testament to how active our students have been.

Have a great week everyone, and keep smiling



Nga mihi nui



Māehe Manawa Ora  
Movin'March

2-31 March 2020 | movinmarch.com



A reminder that children are **not to be at school before 8:30am** .... unless they attend Kapai Kids 'Before School' programme in the hall.

## Welcome

Haere mai ki te kura o Bellevue.

We would like to welcome the following student to Bellevue School:

Navika Singhai in Room 3.

## Assembly Dates

Friday 20 March	<b>Cancelled</b>
All assemblies	<b>Cancelled until further notice</b>

RESPECT



## Character Education

As we focus on bringing out the best in others, we are nurturing manaakitanga, whakaute or respect.

To be respectful, we do not have to share the same opinions, we do not have to agree with others or even like others, but we do need to treat them well. As we are not all the same, we need to honour our differences and to treat others kindly.

While everyone of us is different, each and everyone one of us is special in different ways. When we notice others differences, remember to celebrate these, respect them and treat them well.

Respectful behaviour helps connect people and build relationships - at school, at work and in our private lives. Thank you for reinforcing these important messages and behaviours with your child/ren and with everyone in our learning community, so we continue to connect with others and become stronger together.

## Kupu Hou (new word)

pānui(tia) = read

**Pronunciation** = pah-noo-ee (tea-ah)

He pai ki a koe te pānui pukapuka?  
Do you like to read books?

Kāore ia i pānui i tāna mahi-ā-kāinga.  
He didn't read his homework.

Kei hea ngā pānui mō tēnei ahiahi?  
Where are the notices for this afternoon?



## Thank you

### Special thanks to...

Sami for coming in the weekend to help dismantle a desk and remove it from the Reading Recovery room.



Nicola, Caitlin and Melissa who have started the big job of deadheading all the agapanthus plants in the school grounds. Nicola and Caitlin are doing this for their Bell Challenge as a service to their community.

A special thank you to Moiz (Zain's dad) who worked with Hub 5 on the 12th and 17th of March to share his expertise on eyes and how we see colour. This led to a fun turn on Moiz's computer programme that allows you to control a spaceship and blast asteroids with your eyes. Kia ora Moiz.



## Teacher Only Days - 2020

The local schools in Newlands have attempted to align Teacher Only Days where possible. Please take note of the start date for Term 2 as this has been adjusted to accommodate the Teacher Only Day that most Newlands Schools have scheduled for the start of term.

### Teacher Only Days 2020

**Tuesday 28 April** - the start date for Term 2 is Wednesday 29 April

**Tuesday 2 June** - this is the Tuesday after Queens Birthday Weekend and aligns with the Intermediate School Teacher Only Day

**Friday 23 October** - the Friday before Labour weekend



## Pōwhiri

Our apologies that the pōwhiri scheduled to welcome our new students and staff has been cancelled due to health and hygiene advice from the Ministry of Health and Ministry of Education.

Unfortunately any larger scale events that involve people being in very close proximity are cancelled until further notice. Please note that apart from managing or postponing assemblies, camps and travel for sporting and cultural events, it is **business as usual**.



## Enrolment Information - Zoning

### Important information about the adoption of the enrolment scheme (zone)

If you have pre-schoolers at home that you are planning to enrol at Bellevue School in the future, here are a few important things to know and put into action:

**If you are living outside of the Bellevue School enrolment zone, then your pre-schooler(s) will need to be processed as an out of zone application.** Please let us know, if you haven't already, of any future enrolments at Bellevue School from your family. It helps greatly with our planning to know well in advance. And if we know then we can also prompt you as to when you need to get your out of zone application in.

**It is very important that out of zone applications are received by the application deadline. The next round deadline is 9:00am Friday 5 June 2020, for enrolment from Saturday 4 July to Tuesday 15 December 2020.** We cannot accept any out of zone applications if they are not received by the deadline advertised for the enrolment period your child is due to start school in. The deadline can sometimes be up to six months prior to your child actually starting school.

**Even if your pre-schooler(s) are in zone, please get your paperwork in to us as soon as possible to enable us to plan ahead.** We need this information to be able to work out how many out of zone applications we can accept in each enrolment period.

If you have any questions or are unsure about anything, please call or come into the school office and talk to Amanda.



# Sports News

## Netball

Please get your notices into the sports notices box **by tomorrow, Thursday 19 March** for Lorraine Laulau and Lisa Holden who are our coordinators this year.



## Umpire Development Programme 2020

Are you interested in developing your umpiring and starting your umpire qualifications this season?

Northern Suburbs Netball (NSN) is offering an umpire development programme which is open to any person who wants to receive umpire coaching and start on the pathway to being a qualified umpire. This programme would suit anyone from Year 9 (age 13) and up - both college students and adults who want to work towards their introductory badge.

At only \$10 per person, there will be 4 consecutive weeks of training starting Tuesday, 24 March, 31 March and 2 additional development sessions on the 7 April and 5 May (both Tuesdays) at NIS staff room, regular mentoring at your games, and the opportunity to be assessed for your introductory badge.

Registrations are now open. \$10 payment will be due on acceptance into the programme. Registrations will close on 20 March.

Register your interest by emailing Philippa Starke - [philippas@outlook.co.nz](mailto:philippas@outlook.co.nz)

## Important Dates

We are gearing up towards another fabulous netball season. Here are some key dates for your diaries. Please note that grading and games are all played at Newlands College unless otherwise specified:

**Netball grading:** Years 5 to 8 only - 2 May

**Mid-week training:** Years 5 to 8 only - day and timing to be advised

**Years 5 to 8 season:** 2 May to 22 Aug excl. school holidays

**Years 3 and 4 season:** 9 May to 15 Aug plus 2 rain days excl. school holidays

**Umpiring intro training:** 24 March, 31 March, 7 April, 5 May - 7pm to 8 pm, Newlands Intermediate

**Future Ferns (Star Helpers) coaches session:** 29 April - 6pm, St Brigids library.

More information will follow as we receive it.

If you haven't done so already, please register your child and pop the subsidy payment through to the school. Also, please remember that we need Team Managers and Umpires/Star Helpers (like Umpires but for Years 3 and 4). Without this help we can't register the teams to play. Training is provided as detailed above.



## Northern Suburbs Netball - Volunteer needed

We are looking for a volunteer Treasurer for two years (2020 and 2021) to join our NSN team. We use Xero as our accounting package so the work won't be as hard as you might imagine, plus you'll get on the job training from our outgoing Treasurer. We estimate it will take 2 hours a month, plus monthly meetings during the school term. If you are interested in giving back to our community, keen to join a friendly team and know that you have the skills and experience. Please email our NSN secretary with your details to: [secretary@nsnetball.co.nz](mailto:secretary@nsnetball.co.nz)

## Movin' March

We are already half way through Movin' March and we have been blown away with the number of students who have decided to take up the challenge and become sustainable with the way they are travelling to school this month.



We were lucky enough last Friday to have the Movin' March coordinator Kirsty Barr come and visit our year 4-6's who are participating in a movie making competition and student council who are organising a Wacky Shoe Day, a celebration of all the hard work the students have done in the month of March.

A reminder when your child enters the school grounds they do need to walk their scooter, bike or skateboard to their classroom, so that we can keep our tamariki safe.

## Sanitarium Weet-Bix Kids TRYathlon

If your students missed out on their local Sanitarium Weet-Bix Kids TRYathlon event but still want to get out there and give it a TRY - and get their medal - why not organise a DIY TRY of your own?

They can go for a swim, bike or run, or all 3. All you have to do is send us a video or photo of your students doing their #TRYDIY by 31 March and we will send you out their (hard earned) Weet-Bix Kids TRYathlon Medals, thanks to the team at Toll!

To submit your Video/Photos please head to our website and fill in the form with your details <https://tryathlon.co.nz/try-diy/>

There will also be some extra spot prizes awarded to Kids/Teachers, thanks to our amazing sponsors! We hope that your students can still get out there and have fun with their #TRYDIY

T&C's Apply <https://tryathlon.co.nz/try-diy/termsandconditions/>

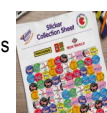
# Yummy Apple Stickers



A reminder to please collect these stickers from apples and the voucher from bags of 'Yummy Apples' for our school. Each year we 'cash these in' to receive a significant amount of extra equipment to support our Sport and PE programmes. A sheet that you can use to collect these over the next six months can be located on our website or you can get a hard copy from the office.

Each year we ask you to forward these filled sheets to the school around September, when they are sent off to the company promoting this. The equipment is then forwarded to the school and put to good use.

Thank you for thinking of us each time that you save these stickers and vouchers for PE equipment.



## Head lice

We have been advised that we have some cases of head lice in the school.

### What are head lice?

Head lice are small flat insects, about 2–3 mm long. They live on the scalp. Headlice lay their eggs (nits) on strands of hair.



**Anyone can get head lice** it doesn't matter how clean or dirty a person's hair is. Head lice spread by crawling from one person's hair to another's – usually between people who are in close contact, such as family or school classmates.

### What do head lice look like?

Head lice can be white, brown or dark grey. They are usually in the hair at the back of the neck or behind the ears. Female head lice lay about 7–10 eggs each night. The eggs are small and hard (like a grain of salt) and are normally pale grey in colour. Eggs are laid close to the scalp and are normally pale grey in colour. Eggs are laid close to the scalp and are firmly glued to strands of hair. After hatching, the empty egg cases are white. Eggs hatch in 9 days, and head lice live for 40 days.

**Checking for head lice** - In school-age children check for head lice often, at least once a week. Scratching, scratch marks or a rash can be a sign that your child has head lice. But not all children complain of itchy heads. If you find head lice or eggs, you will need to treat them.

**Chemical treatments** - Chemical treatments use a special shampoo or lotion that kills the head lice and the eggs. Follow the instructions that are supplied with the chemical treatments. Always do a second treatment 7–10 days after the first. This is to kill any head lice that may have hatched after the first treatment.

**Stop head lice from spreading** - It's not possible to completely prevent head lice because they're very common. But there are things you can do to stop head lice from spreading.

- Brush hair every day. This may help kill or injure head lice and stop them from laying eggs.
- Don't share brushes, combs, headbands, ribbons, hairclips, helmets or hats – anything that touches someone's head.
- Having short hair – or wearing hair in a ponytail if it's long – makes it less likely you or your child will catch head lice.
- Children should hang their clothes on their own hook at school.
- Children should keep their clothes apart from other children's in swimming or sport changing rooms.
- If you do get head lice in your family, everyone that has them should be treated at the same time.
- Let the school and any other close friends know that your child has been treated for head lice.

## School Payments

There is a locked box in the Office foyer for parents/caregivers/students to put any payments that need to be made to school (eg. stationery items, stationery contributions, school donation, trips fees, etc.). These must be put in a sealed envelope with your child's name and room number, as well as what the payment is for.

**Payments can also be made to school online to ASB 12 3223 0048283 00 and must include:**

- Child's name and room number
- Reference, eg. trips



There's no need to complete a paper form this year because you can now claim donation tax credits online in a myIR account, Inland Revenue's secure online service.

- You'll receive your refund much sooner.
- Your receipts can be electronic receipts, or photos or scans of paper receipts.
- Your receipts can be uploaded anytime during the year.

You can find more information on [ird.govt.nz/donations](http://ird.govt.nz/donations).



## Wacky Shoe Day

On Friday the 27th of March we will be having a Wacky Shoe day to celebrate the success of Movin' March. Please come to school wearing crazy shoes. All hubs will be included. Just make sure you can walk!

If you want you could wear two different kinds of shoes:-)

Organised by the Student Council



## Bellevue Athletics Sports Day - Still On

Next Thursday (26 March) is Bellevue School Athletics Day... and this **will go ahead** (unless we are advised otherwise by the Ministries of Health and Education before then). There is limited 'close proximity' for this event, so it will take place as planned.

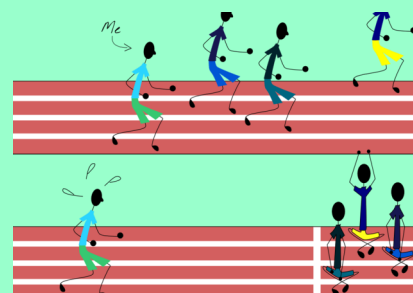
### Hub 3, Hub 4 and Hub 5

Their athletics events start at 9:45am and finish around 2:45pm. All students from these hubs are involved in the rotations marked on the rotation that is attached to today's newsletter.

### Hub 1 and Hub 2

Their athletics' will start at 11:30am and finish around 12:30pm. All students from these hubs are involved and their events will take place on the Newlands Park field, closest to the school.

We welcome all parents, caregivers and whānau/family members who would like to come along, to join us for this fun event next Thursday ie: 26 March.

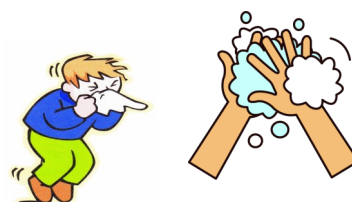


# Coronavirus Update

The Ministry of Health continues to announce any new confirmed cases of COVID-19 in New Zealand and update us with the latest information. If a staff member or student contracted COVID-19, the process would be to trace and track the people they have been in contact with so that those people can be isolated. Removing assemblies and travel reduces the number that would have to be isolated.

Apart from managing or postponing assemblies, camps and travel for sporting and cultural events, it is **business as usual** with an increased awareness of practising good hygiene as the most important way to stop the spread of infections, including the coronavirus (COVID-19). This includes:

- hand hygiene – that is, washing hands regularly with soap and water, or cleansing with hand sanitiser
- staying at home if you are sick
- coughing or sneezing into a tissue or your elbow and then performing hand hygiene
- cleaning surfaces regularly
- Keeping a distance from others where possible (1 to 1.5 metres)



There is currently **no reason that children should not be going to school**, unless they are unwell.

A decision to close a school, would be made by the local Officers of Health. If a case of Covid-19 appears in a school, then the Ministry of Education, in partnership with the Ministry of Health, will track, trace and manage the contacts of the individual with the help of the school community. A school may be closed for several days whilst this happens. Such cases will be dealt with on a school by school basis.

This approach is designed to quickly manage the virus. Should the virus move to widespread 'person to person' transmission then this approach would most likely change. We would take immediate advice in such a situation.

Please find two further links you may find useful when talking with your children:-

1. a video for children and to support you when talking with your child/ren if they are concerned about the coronavirus:-

<https://mail.google.com/mail/u/0/#inbox/FMfcgxbwHMPshnrLMHFXksSHBLbJgTlf?projector=1>

2. an information sheet written specifically for children:-

[https://mcusercontent.com/5a59d05ef35a7506fd0668b/files/859967c7-292f-427b-885e-061fcf09480f/Pages\\_from\\_CoronavirusSocialStory.pdf](https://mcusercontent.com/5a59d05ef35a7506fd0668b/files/859967c7-292f-427b-885e-061fcf09480f/Pages_from_CoronavirusSocialStory.pdf)

Other links for you to find current information are:-

<https://www.ccdhb.org.nz/your-health/covid-19-how-you-can-look-after-yourself/>

<https://www.health.govt.nz/our-work/diseases-and-conditions/covid-19-novel-coronavirus>

A reminder that if you have any concerns you can ring Healthline (for free) on a new dedicated 0800 number specifically for health-related calls about COVID-19 (novel coronavirus) which is on [0800 358 5453](tel:08003585453) at any time. If you have developed symptoms of fever, cough or shortness of breath then seek medical advice by phoning this Healthlines dedicated COVID-19 or contact your GP, including phoning ahead of your visit.

## Life Education - Invitation to Parents

The Life Education van is at school from Monday 16 - Thursday 26 March and is parked outside Rooms 1 - 3.

Marsha Chiet (The Life Education teacher) **invites parents** into the classroom from **8:45 - 9:15am this Friday (ie: 20 March)** and also **next Monday (ie: 23 March) from 2:30 - 3:00** to take a look at the mobile classroom that your child is visiting twice over the next two weeks, and to ask answer any queries you may have about the Life Education programmes being delivered at Bellevue School this year. Come along to meet Marsha, Harold and look at the amazing learning space your child has been visiting.

Please note that the cost of \$4:00 per student to visit the mobile classroom is covered from the \$10:00 donation per term we ask for Trips, Performances and Visits.

We appreciate your contributions to enable your child/ren to participate in these extra educational experiences to enrich their learning.



## School Closures

We know that some parents have concerns about their child/ren attending school, some of which may be due to what is in the media about a school student contracting the virus and a 48-hour school closure in Dunedin.

The current advise from Ministry of Education and Ministry of Health is - if students are unwell (whether or not their illness relates to COVID-19) they should stay at home. **Students** who are **not unwell** should **continue to attend school**.

The Ministry of Education advises that while we are seeing large-scale school shut downs elsewhere in the world, in New Zealand we still have no community transmission. Consequently, any decisions about school closures will be made on a case by case basis. In the meantime, unless students are unwell themselves, then parents should keep sending them to schools and early learning centres as these environments continue to be safe and the best place for them to continue their learning.

Schools continue to be provided with the latest information and guidance from the Ministries of Health and Education so that Principals and Boards can make well-informed decisions based on their particular circumstances.

## Swimming 2020



Please note that every child goes swimming every year as part of their Health and Physical Education programmes at Bellevue School.

Hub 4 and Hub 5 parents/whanau have already been contacted regarding lessons that start in Term 2. Rooms 12, 13, 14 and 15 begin their lessons on Monday 4 May through to, and including, Friday 15 May. Hub 4 (Rooms 5 and 6) are swimming from Monday 18 May through to Friday 29 May. In Term 4, Hub 3 (Rooms 7, 8 and 9) will begin their lessons on Monday 2 November through to, and including Friday 13 November. Hub 1 and Hub 2 will also be swimming in Term 4.

Hub 1 and Hub 2 have lessons from Easy Swim at the pool at Rewa Rewa School. Hub 3, Hub 4 and Hub 5 have swimming sessions at Keith Spry pool in Johnsonville. All students are transported by bus to these lessons. If your child is unable to go swimming, then they will accompany their class to the pool with books or activities they can do while their class/hub is swimming that day.

The cost of lessons and buses to the pool is \$50 per student. This cost covers 10 sessions (two assessment and eight teaching lessons), also the cost of transport to/from the pool. This \$50 can be paid as a one off cost, or can be paid in installments.

Please note that the school applies for grants to assist with the cost of the buses and to keep the costs of these sessions more manageable for parents/whanau. However, if you are unable to meet the costs of lessons, please contact Amanda (our accounts person) in the office by phone or by emailing:

[Amanda@bellevue-newlands.school.nz](mailto:Amanda@bellevue-newlands.school.nz) so that your child/ren can still benefit from these lessons.



## Juicies Fundraiser- Term 1

The Bellevue FUNdraisers Committee is offering juicies (frozen iceblocks) as part of lunch on Athletics day which is being held on Thursday 26 March (the fundraiser will go ahead even if Athletics day is postponed).



Order forms were sent home on Monday (16 March) and need to be **back at school by 9:00am this Friday, 20 March.**

Orders can be paid online (please label with 'Juicies' and return the order form to school) or with correct cash accompanying the order form (placed in a named envelope and clearly labelled 'Juicies')

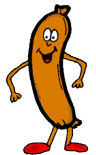
## Sausage Sizzle - Term 1



Please note that the Term 1 sausage sizzle is on Friday 27 March - the same day as the Wacky Shoe Day that signals the end of 'Moving March' activities at school.

Order forms for the Sausage Sizzle were sent home on Monday (16 March) and need to be **back at school by 9:00am this Friday, 20 March** so that orders can be processed in time.

Orders can be paid for online (please label with 'sausage sizzle' and return the order form to school) or with correct cash accompanying the order form (placed in a named envelope and clearly labelled 'sausage sizzle')



## Pizza Lunch - Term 1



We are running a fundraising lunch of pizza to raise funds for the 'Jubilee Corner' landscaping project. We are encouraging children to order and pay for a \$7 pizza, of which \$2 is donated to our school. All of these pizzas are made by our local Hell's Pizza.

Order forms will come home next Monday (ie: 23 March) and need to be **back at school by 9:00am on Friday 27 March** so that orders can be processed in time. Orders can be paid for online (please label with 'Pizza' and return the order form to school) or with correct cash accompanying the order form (placed in a named envelope and clearly labelled 'Pizza')



## Community Notices

*Community notices are included as space allows, and are limited to no more than 100 words. Every effort is made to present accurate information, however the Board does not accept responsibility for any inaccuracies. The Board is unable to accept responsibility for goods or services advertised.*

### KAPAI KIDZ - Holiday Programme

We will be operating from the school hall from 14-24 April inclusive. Hours are from 7.30am - 6.00pm. Enrol via our website [www.kapaikidz.co.nz/programmes](http://www.kapaikidz.co.nz/programmes). All enquires to Linda Robinson 021 409641 or [linda@kapaikidz.co.nz](mailto:linda@kapaikidz.co.nz)



### SQUASH - The healthiest sport in the world

KIDS, learn a new sport and have fun. Junior Club nights Friday 5pm - 7pm (check our facebook for variations)

MUMS - Drop the kids at school and try out a brand new sport through MUMS N BUBS SQUASH (bubs not compulsory - feel free to come alone). Thursdays from 9:30 - 11. First week free, then \$5. Child friendly area. Tawa Squash Club, 67 Main Road, Tawa (next to St Francis Xavier School) 232 8200.



### Wonderplay drama classes

Places are available this term for 5-8 year olds (Saturdays) and 9-12 year olds (Tuesdays), also ask about our famous Wellington Young Actors class for teens (Tuesday). Classes held at Churton Park Community Centre. First lesson is free to try.

Please contact Debs [debs@wonderplay.co.nz](mailto:debs@wonderplay.co.nz) 021-172-2836, [www.wonderplay.co.nz](http://www.wonderplay.co.nz)

