



Weekly Newsletter

20 May 2020 Whakapuputa mai o manuka kia kore ai e whati = Cluster the branches of the Manuka so they will not break

Term 2 - Issue 1

Week 6

Important Dates

Tuesday 2 June	Teacher Only Day POSTPONED until later in the year. Date to be confirmed.
Thursday 11 June	FUNdraisers Meeting - Whare Iti - 7pm
Tuesday 23 June	School Photo Day
Thursday 30 July	Board of Trustees meeting - 7:00pm in staffroom
Friday 3 July	End of Term 2
Monday 20 July	Start of Term 3

From The Principal's Desk



Kia ora, Nameste, Talofa, Konnichiwa, Guten Tag, Gidday, Vannakkam, ni Hao, Kia orana, Hola, Salam, Sa wat dee kha, Dia Dhuit, Goeie Dag, Bonjour, Hello, (please let us know the greeting in your language if it is not here)

NZSL

How wonderful it is to be back at school with our lovely students. It was fantastic to see them again after such a long break, also their smiles and enthusiasm as they came through the gate on Monday morning.

A huge thanks to all you amazing parents/caregivers and whānau/families too. The discussions and preparation you did with your children, and promptness in letting them go at the gates really helped for a settled start to the re-entry to school at Alert Level 2. Again we would like to acknowledge and express our appreciation for your understanding of the need to restrict extra adults on the school site at this time.

With the national message ringing in our ears "**We are all in this together**", we know that together we can continue encouraging our children (and each other) to be positive and empathetic to each other, forward looking and to keep on having fun.

"The reason **adults** should look as though they are having **fun**, is to give kids a reason to want to grow up." - Pat Adams

With this in mind we are intending to have some fun over the next few weeks as we adjust to school routines and learning on site again within the Alert Level 2 guidelines.

Have a great week everyone, and keep smiling

Nga mihi nui
Karen



BACK TO SCHOOL



A reminder that children are **not to be at school before 8:30am** unless they attend Kapai Kids 'Before School' programme in the hall. **Also we are staggering start and finish times for the first few weeks back at school.**

Arrival times are:-

8:30am - Hub 5 students (+ any younger siblings)

8:45am - Hub 3 + 4 students (+any younger siblings)

9:00am - Hub 1 + 2 students

Welcome

Haere mai ki te kura o Bellevue.

We would like to welcome the following student to Bellevue School:
Alexander Toomata in Room 10/11 A, also welcome to his family into our Bellevue Learning Community.

A warm welcome to Briar Parker who joined the teaching team as Room 10/11B whānau teacher when Marlaina Myers moved into the position of The Resource Teacher of Literacy for all the schools in North Wellington. Kia ora Briar, and we wish Marlaina well in her exciting new position too.

Assembly Dates

All assemblies **Cancelled until further notice**

Character Education

The value we are focusing on nurturing with students this term is Resilience or Manawaroa.

Resilience is "The ability to become strong, healthy or successful again after something bad happens".

Also "**Resilience** is our ability to regain original form, to thrive and fulfil potential in spite of adversity or difficult circumstances. When **life** situations get out of kilter, it is the quality and **skill** we need most to get us through the difficult times." - J Calais.

So as we currently move through the COVID-19 Alert Levels to resume our lives in a safe way we are all practising and nurturing manawaroa. While working to increase our resilience, it is important that we are forgiving of ourselves and of others as we face challenges in our lives.

At Bellevue our focus is on working together with you to support your child/ren, everyone at school and others in our learning community to help overcome this unexpected event and move forward. By continuing to connect with each other and striving to become stronger, we can do this collective resilience building together and thrive during these interesting times. Kia kaha.

He eke waka noa = we are all in this together. This whakatauki refers to acting as a collective, working in unity and leaving no one behind.



Kupu Hou (new word)

whiti(a) = shine
Pronunciation = fee-tee (ah)

E **whiti** ana te rā.
The sun is *shining*.

Kei te **whiti** te rā.
The sun is *shining*.

E **whitia** ana au e te rā.
I am being *shone* on by the sun.

Haria ngā kākahu ki waho kia **whitia** ai e te rā.
Take the clothes outside so that they can be *shone* on by the sun.



Thank you

Special thanks to...

The Lange and Cooke whānau who sent along some treats for the staff on our first few days back. Your kindness and empathy for the staff mahi over the past few weeks is very much appreciated. Kia ora koutou.

All our parents/whānau who helped prepare their children for the return to school, also to the staff who were on the gates welcoming back students this week (along with some other 'friends') so that there were smiles as children said 'goodbye' and came into the school grounds. Tino pai rawa koutou.



Monday's welcoming committee



Tuesday's welcoming committee



Wednesday's welcoming committee

Thanks to the team of adult supervisors that Hannah and Deeann organised to help cross students over Bancroft Street this week. Thank you to Hannah, Nerys, Kris, Emma, Jo, Heather, Cendriene, Nik, Jennifer, Nita, Debi and Tracy for willingly helping watch that people were safe as they crossed over the road to the main gate of the school in lieu of our Road Patrol students. Tuameke koutou.

Thank you Feta, Seyclean Lawnmowing and our Crestclean cleaners who did a great job of preparing the school for Alert level 2 return to school for students and the staff - also for their ongoing work to keep our school site safe.



Teacher Only Days - 2020

The local schools in Newlands have attempted to align Teacher Only Days where possible. Please take note of the change to these dates

Teacher Only Days 2020

Tuesday 28 April - during lockdown

Tuesday 2 June - the Tuesday after Queens Birthday Weekend
- now **POSTPONED** until later in the year. Date to be confirmed.

Friday 23 October - the Friday before Labour weekend



School Gatherings

Unfortunately due to health and hygiene advice from the Ministry of Health and Ministry of Education we are not able to hold any larger scale events that involve mass gatherings or being in close proximity to others. Please note that this means we have postponed assemblies, pōwhiri, choir, our annual Matariki Evening celebration, production and travel for sporting and cultural events for the time being.

As we evolve new ways of working and connecting, we will let you know how we decide to welcome our new students and staff to Bellevue School in the interim.



Enrolment Information - Zoning

Important information about the adoption of the enrolment scheme (zone)

If you have pre-schoolers at home that you are planning to enrol at Bellevue School in the future, here are a few important things to know and put into action:

If you are living outside of the Bellevue School enrolment zone, then your pre-schooler(s) will need to be processed as an out of zone application. Please let us know, if you haven't already, of any future enrolments at Bellevue School from your family. It helps greatly with our planning to know well in advance. And if we know then we can also prompt you as to when you need to get your out of zone application in.

It is very important that out of zone applications are received by the application deadline. The next round deadline is 9:00am Friday 5 June 2020, for enrolment from Saturday 4 July to Tuesday 15 December 2020. We cannot accept any out of zone applications if they are not received by the deadline advertised for the enrolment period your child is due to start school in. The deadline can sometimes be up to six months prior to your child actually starting school.

Even if your pre-schooler(s) are in zone, please get your paperwork in to us as soon as possible to enable us to plan ahead. We need this information to be able to work out how many out of zone applications we can accept in each enrolment period.

If you have any questions or are unsure about anything, please call or come into the school office and talk to Amanda.

COVID-19 Update

Continued practise of good hygiene is the most important way to stop the spread of infections, including the coronavirus (COVID-19). This includes:

- hand hygiene – that is, washing hands regularly with soap and water, or cleansing with hand sanitiser
- staying at home if you are sick
- coughing or sneezing into a tissue or your elbow and then performing hand hygiene
- cleaning surfaces regularly
- Keeping a distance from others where possible (1 to 1.5 metres)



There is currently no reason that children should not be going to school, unless they are unwell or have a compromised immune system (or someone in their family who has this).

If a case of Covid-19 appears in a school, then the Ministry of Education, in partnership with the Ministry of Health, will track, trace and manage the contacts of the individual with the help of the school community. A school may be closed for several days whilst this happens and the school is cleaned.

Other links for you to find current information are:-

<https://www.ccdhb.org.nz/your-health/covid-19-how-you-can-look-after-yourself/>

<https://www.health.govt.nz/our-work/diseases-and-conditions/covid-19-novel-coronavirus>



A reminder that if you have any concerns you can ring Healthline (for free) on a new dedicated 0800 number specifically for health-related calls about COVID-19 which is [0800 358 5453](tel:08003585453) at any time. If you have developed symptoms of fever, cough or shortness of breath then seek medical advice by phoning the Healthline number dedicated for COVID-19 or contact your GP, including phoning ahead of your visit.

School Payments

There is a locked box in the Office foyer for parents/caregivers/students to put any payments that need to be made to school (eg. stationery items, stationery contributions, school donation, trips fees, etc.). These must be put in a sealed envelope with your child's name and room number, as well as what the payment is for.

Payments can also be made to school online to - ASB 12 3223 0048283 00 and must include:

- Child's name and room number
- Reference, eg. trips



There's no need to complete a paper form this year because you can now claim donation tax credits online in a myIR account, Inland Revenue's secure online service.

- You'll receive your refund much sooner.
- Your receipts can be electronic receipts, or photos or scans of paper receipts.
- Your receipts can be uploaded anytime during the year.



Yummy Apple Stickers



A reminder to please collect these stickers from apples and the voucher from bags of 'Yummy Apples' for our school. Each year we 'cash these in' to receive a significant amount of extra equipment to support our Sport and PE programmes. A sheet that you can use to collect

these over the next six months can be located on our website or you can get a hard copy from the office.

Each year we ask you to forward these filled sheets to the school around September, when they are sent off to the company promoting this. The equipment is then forwarded to the school and put to good use.

Thank you for thinking of us each time that you save these stickers and vouchers for PE equipment.



Fun Friday - this week

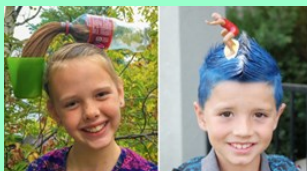


For a bit of fun this Friday we are encouraging everyone to join in our Funny Hat/Hair day. Your child may have a funny hat at home already, or one that they can add something creative to, or they may even wish to make a hat!

They might even like to have some fun by trying to create a 'social distancing' hat as children in other countries have done.



Or - your child might try something creative with their hair...



As part of promoting a fun end to the first week back in Alert Level 2, we hope that everyone can use their creativity to come along with something that is fun in their hair or on their head.

