



Weekly Newsletter

5 August 2020

Me whakamātua = We work hard to achieve together.

Term 3 - Issue 3

Important Dates

Tues 11 August	Vision & Hearing Technician visiting school
Tues 11 August	Newlands Intermediate School In Action Morning - 9:00 - 10:30:am
POSTPONED until 2021	Mobile Dental Van visit
Wed 19 August	ICAS Science
Wed 26 August	ICAS English
Wed 2 September	ICAS Maths
10 September	Board of Trustees Meeting - 7pm
26 Sept - 11 Oct	Term Break
Monday 12 Oct	First day of Term 4
Tuesday 15 Oct	NZ 'Shake Out' drill/practise
Friday 23 October	Teacher Only day
Tuesday 10 Nov	Whole School Evacuation/ Reunification practise.



From The Principal's Desk



Kia ora, Nameste, Talofa, Kia orana, Konnichiwa, Guten Tag, Gidday, Vannakkam, ni Hao, Kia orana, Hola, Salam, Sa wat dee kha, Dia Dhuit, Goeie Dag, Bonjour, Hello, (please let us know the greeting in your language if this is not here)
NZSL

As we reflect on what is happening in the rest of the world regarding the COVID-19 pandemic, we can appreciate how fortunate we are that for many of us life is almost back to normal and, despite the Covid-19 pandemic still raging overseas, we are able to gather with friends and for events. However it is noticeable that the pandemic lockdown and post-COVID period has impacted on people, and is still doing so. We need to be mindful that many people show signs of becoming agitated more quickly and have a tendency to get angry more easily. Research tells us that this is perfectly normal following any traumatic event or time of crisis. It indicates that people can be more volatile (ie have a 'short fuse'), also that external events can often act as a trigger for anger. This can be difficult if you are on the receiving end of these reaction(s).

Advice from researchers and people who work in the area of wellness, is that when this happens try to stay calm yourself, step back and take time to cool off. They suggest we try to understand the other persons perspective, also to talk about the issue once everyone has calmed down and can look at things more rationally. You may have seen notices in supermarkets and public spaces reminding us that we have been through this traumatic period and to continue to be kind/stay kind to others. We encourage our students (and staff) to do this each day too.

Please note that all our staff are continuing to do their very best to work with you and your child/ren for the best of their education, so please continue to treat them with patience and respect as you share any issues. Please understand that while things are almost back to normal, this is a work in progress. Together we are working to best support your child/ren through these different times.

Have a great week everyone.

Ngā mihi nui
Karen 😊

Character Education

As we continue our focus on manaakitanga, aroha or empathy we continue to promote the many other values that contribute to developing empathy:-

- * Caring
- * Compassion
- * Consideration
- * Courtesy
- * Kindness
- * Forgiveness
- * Gentleness
- * Helpfulness
- * Patience
- * Respect
- * Self-discipline/Self-management
- * Service
- * Tolerance
- * Understanding

Thank you for modelling these behaviours, talking with your child about examples of these attributes and acknowledging them when you see them practising empathy through one of these.



EMPATHY IS SIMPLY LISTENING, HOLDING SPACE, WITHHOLDING JUDGMENT, EMOTIONALLY CONNECTING, AND COMMUNICATING THAT INCREDIBLY HEALING MESSAGE OF "YOU'RE NOT ALONE."

Welcome

Haere mai ki te kura o Bellevue.

We would like to welcome the following student and their family to Bellevue School:

Jack Kennard to Room 4.



Assembly Dates

Friday 7 August	Assembly led by Hub 5 - 2.15pm
Friday 21 August	Assembly led by Hub 2 - 2.15pm
Friday 4 Sept	Assembly led by Hub 1 - 2:15pm
Friday 18 Sept	Singing Assembly - 2:15pm

Kupu Hou (new word)

Whaikōrero = to make a speech, main speech

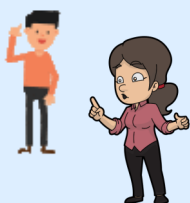
Pronunciation = f-eye-cor-reh-ror

E **whaikōrero** ana te koroua.

The elderly man is *making a speech*.

Kei te whakarongo au ki te **whaikōrero**.

I am listening to the main speech.



Thank you

Special thanks to...

Rachel Worboys for the lovely treats she brought along for the staff to enjoy last week. We really appreciate you thinking of us.

Shona and Mandy for their generous donation of whiteboard pens and highlighters to the school for student use. Kia ora korua.

Newlands Intermediate News

School in Action Morning - Tuesday 11 August

Come along **between 9:00am - 10.30am** and see what Newlands Intermediate does. This is an opportunity to see Newlands Intermediate working as it does each day.

All enrolments for 2021 should be made online by 31 August 2020 at www.newlandsint.school.nz.

The Board of Trustees determines how many out-of-zone places we will have for 2021 after 1 September. Please check the website for this announcement but this information will also be shared with local schools and through a notice in the local newspaper.

Orientation Morning - Friday 13 November

Students who are enrolled, or planning on attending Newlands Intermediate in 2021 are invited to take part in this Orientation morning.

Cook Islands Language Week

This year marks the ninth Cook Islands Language week.

The theme for 2020 is "Kia pūāvai tō tātou Reo Māori Kūki 'Āirani i Aotearoa" which in English means "That the Cook Islands Māori language may blossom throughout New Zealand." This theme was developed by the Cook Islands Teachers & Educators Collective New Zealand (CITECNZ).

Please see the community notices for the Newlands Pasifika Festival coming up next month.



Election Day - Saturday 19 September

Our school will once again be a Voting Place for the General Election in September. The Ōhāriu Electorate is looking for good people to staff the Voting Place, and there are also opportunities to work before and after Election Day. These are paid roles and full training is given.

See elections.nz/jobs for more details. If you wish to work on Election Day, please help the recruitment team by stating your preferred Voting Place when you apply.



Scholastic Bookclub

Scholastic bookclub booklets have been sent home to all families.

Orders are due in tomorrow, Thursday 6 August.

Payment is either by cash, credit card (details on the bookclub form) or by Cheque made out to Scholastic Bookclub.



Please place your order in the locked box in the Office foyer.

Orders must be put in a sealed envelope with your child's name, room number and Scholastic Bookclub written on the outside of the envelope.

Enrolment Information - Zoning

Important information about the adoption of the enrolment scheme (zone)

If you have pre-schoolers at home that you are planning to enrol at Bellevue School in the future, here are a few important things to know and put into action:

If you are living outside of the Bellevue School enrolment zone, then your pre-schooler(s) will need to be processed as an out of zone application. Please let us know, if you haven't already, of any future enrolments at Bellevue School from your family. It helps greatly with our planning to know well in advance. And if we know then we can also prompt you as to when you need to get your out of zone application in.

It is very important that out of zone applications are received by the application deadline. The next round deadline is 9:00am Friday 30 October 2020, for enrolment from Wednesday 16 December 2020 to Friday 9 July 2021. We cannot accept any out of zone applications if they are not received by the deadline advertised for the enrolment period your child is due to start school in. The deadline can sometimes be up to six months prior to your child actually starting school.

Even if your pre-schooler(s) are in zone, please get your paperwork in to us as soon as possible to enable us to plan ahead. We need this information to be able to work out how many out of zone applications we can accept in each enrolment period.

If you have any questions or are unsure about anything, please call or come into the school office and talk to Amanda.

Booster Wine Group LP - Wine Offer Fundraiser



This offer closes on Friday 14 August 2020.

Booster Wine Group LP will donate \$40:00 per case which will go towards fundraising for the Jubilee Corner outdoor learning and play space at Bellevue School.

Your support is greatly appreciated.

Fundraisers Update

Book Fair

Postponed until 2021. Please start putting any surplus 'as new' books that are in good condition aside at your home. The Fundraisers will call for these to be donated/brought to the school early next year.

Wine Orders

Please note Booster Wine Group LP donates \$40:00 per case. This offer closes on Friday 14 August 2020.

Sausage Sizzle Lunch at School

The next Sausage Sizzle is on Friday 14 August. Order forms were sent out on Monday and orders close 9:00am this Friday 7 August.

Entertainment Book Memberships

Available throughout the year. You can purchase at entertainmentbook.co.nz/orderbooks/1g04109. The school receives at least \$14 for each book sold.

Calendars and Cards

Your child/ren's artworks are on these products. Parents can view these from 7 September, with orders in by 18 September. Prices remain the same as last year ie: \$13 for calendars, \$14 for cards, \$17 for diaries, \$15 for computer mouse mats, \$13 for sketch pads.

Juicies at School

To welcome in the spring, there is a 'Juices at School' day on Friday 4 September. To 'Spring into Spring' with a juicie, order forms will come home on Monday 24 August and need to be back in to school by Friday 28 August.

Warehouse Stationery - Support Your School

Please note that you can nominate our school when you purchase items at Warehouse Stationery. These are turned into bonus points that enable us to 'purchase' items for student use. Thanks for doing this when you are shopping at Warehouse Stationery.

Yummy Apple Stickers



A reminder to please collect these stickers from apples and the voucher from bags of 'Yummy Apples' for our school.



Thank you for thinking of us each time that you save these stickers and vouchers for PE equipment.

Board of Trustees Meet-

The next Board meeting is on Thursday 10 September at 7:00pm in the staffroom. A newsletter from the Board is included in the mail out today.

Emergency Evacuation

National Shake Out Practise

New Zealand Emergency Services promotes a National Shake Out Practise every year. This year it is taking place at 9:30am on Thursday 15 October. Wherever you are during New Zealand Shake Out, you can take part in the drill. Just Drop, Cover and Hold for up to one minute, and if you are in a coastal area they suggest also practising your tsunami hīkoi.

Bellevue Annual Whole School Evacuation + Reunification practice

This year this practice will take place on **Tuesday 10 November**. On this day there is an 'emergency scenario' which is announced through a text message to you during the day. You will be alerted so that you or one of your Emergency Release Adults comes to collect your child/ren from school. Please look out for further details about this important annual Health and Safety drill in future newsletters.

Rail Safety Week

10-16 August is Rail Safety Week - Cross with Care/Kia tūpato te whakawhiti. This message is from Kirsty Barr, the Travel Choice Co-ordinator Greater Wellington Te Pane Matua Taiao.

Rail Safety Week aims to reduce near miss collisions on level crossings. Every near miss is a traumatic event and has a very real impact on the locomotive engineers, the witnesses involved and on those who nearly lost their lives. Never cross when bells or lights are activated and always look carefully in both directions before crossing. Be especially careful to look for a second train. If one train has stopped at a station another one could be coming. For those families interested, have a look at this Rail Safety Virtual Field trip at <http://www.learnz.org.nz/railsafety193/videos> information that was shared with participating schools in 2019. Visit this website <https://www.tracksafe.co.nz/> for more information.



Library News

If you haven't already had the chance to see the new signs for 'Fiction' and 'Non-Fiction' in the library pop on in and have a look.

A big thank you to our crafty parent Kris for making these.

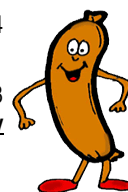


Sausage Sizzle

Please note that the Term 3 sausage sizzle is on Friday 14 August.

Order forms for the Sausage Sizzle came home on Monday (3 August) and need to be **back at school by 9:00am this Friday 7 August** so that orders can be processed in time.

Orders can be paid for online (please label with 'sausage sizzle' and return the order form to school) or with correct cash accompanying the order form (placed in a named envelope with your child's whānau class number and clearly labelled 'sausage sizzle').



Dental Van Visit - postponed until 2021

Due to the power issues that we have been experiencing at school this year, the Dental Van visit to school that was due to happen this month is now postponed until next year. The school has been advised to reduce any extra draw on our power until the remediation work can be actioned.

If you have any concerns about your child/ren's dental health or want to make an appointment with the dental therapists please ring the Dental Hub at Raroa Intermediate - 0800 825583.

We apologise for having to take this course of action at this time.

Sports News

Northern Zone Cross Country

Congratulations to all the students who participated in the Northern Zone Cross Country event last Friday. Thank you for being such great ambassadors for the school. We were very proud of your 'sportsmanship', the way that you supported others and your ability to demonstrate such wonderful behaviour at an event outside our school. Congratulations also to our three students who made it into the Wellington Cross Country event. Well done Lucy Foster, Pippa Holden and Sam Stratton who will compete at this higher level event.



Netball

The results from Saturday:-

Bellevue Storm won against Cashmere Magic 10 - 6 POD Luka

Bellevue Tsunami lost against Redwood Royals POD Tilomai

Bellevue Thunder lost against St Brigids Bunnies 0 - 4 POD Naizak

Bellevue Hurricanes lost against Crofton Downs 2 - 8 POD Isla

Bellevue Cyclones won against Redwood Stars 19 - 1 POD Olivia



Thank you to the coaches who have given up their time this year. We apologise that some of your names were missed in last week's newsletter. Thank you -

Lightning: Erin Bellhouse, Toni Mitchell, Adrian Landymore

Thunder: Mary Sleep, Amy Harris

Tsunami: Teresa Kennedy, Hayleigh Pere and Chris Bai

Storm: Peter Holden, Tracy Steel

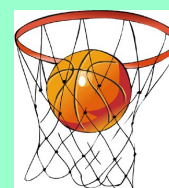
Hurricanes: Kate Ritch, Zana Betty

Cyclones: Maria Church, Heather Lange

Miniball

We are looking for parents to manage the Bellevue miniball teams for Term 4. The role will include signing the team up, collecting fees from players, informing players of game changes and emailing the school the results of the game each week.

If you are interested please email Miss George (jenny@bellevue-newlands.school.nz).



Community Notices

Community notices are included as space allows, and are limited to no more than 100 words. Every effort is made to present accurate information, however the Board does not accept responsibility for any inaccuracies. The Board is unable to accept responsibility for goods or services advertised.

Paparāangi Kindergarten:

Paparāangi Kindergarten is turning 50 years old and to celebrate are holding an open afternoon on Sunday 30 August from 1pm. There will be an afternoon tea at 2.30pm. They would love to see past families, committee members and teachers join them.

Please RSVP to paparangi@wmkindergartens.org.nz



Home-based Educator Available:

Spaces for before and after school care. 20+ years experience. References available. Call Heidi on 021 02444750.

Newlands Pasifika Festival:

Fakaalofa lahi atu, Bula Vinaka, Fakatalofa atu, Kia orana, Mālō e lelei, Mālō nī, Talofa lava, Tēnā koutou katoa and warm Pacific greetings!

If you are interested in attending the Pasifika festival you are invited to the annual Newlands/Paparangi Pasifika Festival on Thursday 10 September.

Key information:

- Doors open at 6:30pm with a 7:00pm start.
- The classroom next to the hall and the whare nui are used as changing rooms.
- This is a shared kai event, so please bring some food to share if you are attending so that there is plenty of kai to feed the troops. Trestle tables will be set up at the back of the hall for this.
- Pasifika leaders at Newlands College will MC the evening.

Performance order starting at 7:00pm:

1. Newlands Primary
2. Newlands Intermediate
3. Newlands College/Onslow College