



Weekly Newsletter

19 August 2020

Me whakamātua = We work hard to achieve together.

Term 3 - Issue 5

Important Dates

POSTPONED until 2021	Mobile Dental Van visit
Wed 26 August	ICAS English
Wed 2 September	ICAS Maths
10 September	Board of Trustees Meeting - 7pm
19 September	Nominations close at noon for BOT By-election
26 Sept - 11 Oct	Term Break
Monday 12 Oct	First day of Term 4
Tuesday 15 Oct	NZ 'Shake Out' drill/practise
Friday 23 October	Teacher Only day
Tuesday 10 Nov	Whole School Evacuation/ Reunification practise

Please do not come to school before this time.



From The Principal's Desk



Kia ora, Nameste, Talofa, Kia orana, Konnichiwa, Guten Tag, Gidday, Vannakkam, ni Hao, Kia orana, Hola, Salam, Sa wat dee kha, Dia Dhuit, Goeie Dag, Bonjour, Hello, (please let us know the greeting in your language if this is not here)

Thank you to all our students, families/whanau and staff for continuing to adhere to the Level 2 Alert protocols. We understand that it is not what any of us would like to be part of our usual daily practice, but we do need to continue to follow the advice of the Ministry of Health, the Ministry of Education and government so that we are all safe in the current COVID climate. Thank you for continuing to drop your child at the gate each morning or encouraging them to walk to school, and for the reverse procedure at the end of the day. A special thanks to those parents/caregivers who came along to see your child's Passion Projects yesterday and understood the need to walk through the school in a specific area, sanitize, sign in and comply to the social distancing guidelines as much as possible. Unfortunately this week's assembly has been postponed. As we can not maintain sufficient distance between students so that they are not touching or breathing directly on each other, or limit the number of people outside the students/staff who would be gathering together, there will be no assemblies taking place during Level 2.

Also a very big well done to all our Year 5 and Year 6 students who worked to make their Passion Projects such a huge success. It was wonderful to see the students talking so articulately and animatedly about their learning. Thank you also to their teachers and the 'experts' who they interviewed or spent time with to assist them with their learning. Kia ora koutou.

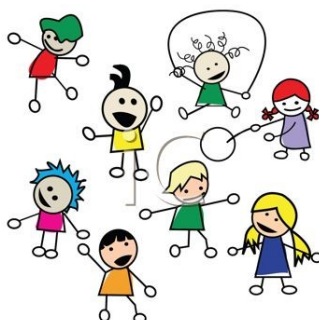
Ngā mihi nui
Karen



Character Education

Assembly Dates

Friday 21 August	Postponed at Level 2 Alert Level
Friday 4 Sept	To be advised
Friday 18 Sept	To be advised



With the current focus on manaakitanga, aroha or empathy we appreciate that this value is about thinking of others to take care about how our words and actions may affect them. It is not about judging or blaming others, but looking for ways of caring for them and helping them.

This analogy with growing lettuce may help when talking with your child to promote empathy, rather than a 'blame or shame' approach.

Please continue to talk with your child/ren about examples of manaakitanga and empathy to help them build an understanding of what this is. Also by acknowledging them when they demonstrate this value, it helps them appreciate what they can do to show it.

5

EMPATHY

When you plant lettuce, if it does not grow well, you don't blame the lettuce. You look for reasons it is not doing well. It may need fertilizer, or more water, or less sun. You never blame the lettuce. Yet, if we have problems with our friends or family, we blame the other person. But if we know how to take care of them, they will grow well, like the lettuce. Blaming has no positive effect at all, nor does trying to persuade using reason and argument. That is my experience. No blame, no reasoning, no argument, just understanding. If you understand, and you show that you understand, you can love, and the situation will change.

THICH NHAT HANH

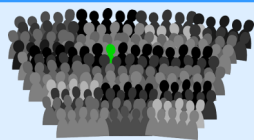
Kupu Hou (new word)

Hui = to gather, assemble, a meeting
pronunciation = who-ee

E haere ana tātou ki te **hui** raranga.
We are going to the weaving *meeting*.

Mā te rangatira o te iwi te **hui** e tīmata ki te karakia.
The chief of the tribe will begin the meeting with the prayer.

Kei te papa tuatoru te **hui** ā te ahiahi nei.
The *meeting* will be held on the third floor this afternoon.



Thank you

Special thanks to...

Alby Frampton, Vicky Sime, Neil Sime, Meredith Street, Lorraine Laulau, Feta Laulau, Roger Weaver, Peter Wood, Matthew Fraser, Jeff Tatum and Neil Arnold for supporting Hub 5 students with their Passion Projects.

Those wonderful parents helping with road crossing during Alert Level 2. We appreciate your help with this as we do not ask students to do Road Patrol duty during Level 2 and our senior staff are at the gates to limit non-essential adults in the school. Thank you Jennifer, Nita, Hannah, Debi, Nik, Wes, Heather, Rachael, Tracy, Tim, Mel, Harriet, Jane, Nerys and Kris.



Enrolment Information - Zoning

Important information about the adoption of the enrolment scheme (zone)

If you have pre-schoolers at home that you are planning to enrol at Bellevue School in the future, here are a few important things to know and put into action:

If you are living outside of the Bellevue School enrolment zone, then your pre-schooler(s) will need to be processed as an out of zone application. Please let us know, if you haven't already, of any future enrolments at Bellevue School from your family. It helps greatly with our planning to know well in advance. And if we know then we can also prompt you as to when you need to get your out of zone application in.

It is very important that out of zone applications are received by the application deadline. The next round deadline is **9:00am Friday 30 October 2020**, for enrolment from **Wednesday 16 December 2020 to Friday 9 July 2021**. We cannot accept any out of zone applications if they are not received by the deadline advertised for the enrolment period your child is due to start school in. The deadline can sometimes be up to six months prior to your child actually starting school.

Even if your pre-schooler(s) are in zone, please get your paperwork in to us as soon as possible to enable us to plan ahead. We need this information to be able to work out how many out of zone applications we can accept in each enrolment period.

If you have any questions or are unsure about anything, please call or come into the school office and talk to Amanda.

Phone 478 7037

Newlands Intermediate News

All enrolments for 2021 should be made online by 31 August 2020 at www.newlandsint.school.nz.

The Board of Trustees determines how many out-of-zone places they will have for 2021 after 1 September. Please check the website for this announcement.

Orientation Morning - Friday 13 November

Students who are enrolled, or planning on attending Newlands Intermediate in 2021 are invited to take part in this Orientation morning.

All students are collected from their schools by bus for this morning.

Arrival at School Time

A reminder - please do not bring your child to school or allow them to arrive at school before 8:30am in the morning.

We expect all students to arrive between 8:30 and 9:00am, so that they can greet their whānau teacher in class as they arrive and talk with their classmates/friends before the bell goes at 9:00am.

Please help us do the best for your child/ all our children as you **MAKE SURE THAT YOUR CHILD arrives BETWEEN 8:30am and 9:00am** so that their teachers have the time to get ready for their arrival at the start of each day

Thanks
Bellevue Staff

No child should be at school before 8:30am unless they attend Kapai Kids 'Before School Programme'.

Many thanks from all the staff.



COVID-19 Test and Treatment

The Ministry of Health and Ministry of Education have asked us to share the following information with our staff and parents/whānau.

COVID-19 related care – including diagnosis, testing and treatment – is provided and free of charge to anyone who requires it, who has symptoms.

This is irrespective of citizenship, visa status, nationality or level of medical insurance coverage. The **only time a person should be charged** is when they ask for a test in order to enter another country.

Covid Information - Parent Website

The Ministry of Education has a [parent website](#) which has further information about COVID-19 alert levels for parents and whānau. It will be regularly updated as they get new information.

Board of Trustees Meeting

The next Board meeting is on Thursday 10 September at 7:00pm in the staffroom.

Health & Physical Education Survey

Every two years schools connect with their community to ask for their guidance on the focus of Health and Physical Education programmes. Next week there is a survey coming to you to help us review programmes to check that they meet the needs of our current children. There will be a link for you to do this directly on line, and a hard copy will come home for those who wish to respond this way or we are happy if you wish to respond kanohi ki te kanohi (face to face) with a staff member.

Fundraisers Update

Book Fair

Postponed until 2021. Please start putting any surplus 'as new' books that are in good condition aside at your home. The Fundraisers will call for these to be donated/brought to the school early next year.

Entertainment Book Memberships

Available throughout the year. You can purchase at entertainmentbook.co.nz/orderbooks/1g04109. The school receives at least \$14 for each book sold.

Calendars and Cards

Your child/ren's artworks are on these products. Parents can view these from 7 September, with orders in by 18 September. Prices remain the same as last year ie: \$13 for calendars, \$14 for cards, \$17 for diaries, \$15 for computer mouse mats, \$13 for sketch pads.

Juicies at School

To welcome in the spring, there is a 'Juicies at School' day on Friday 4 September. To 'Spring into Spring' with a juicie, order forms will come home on Monday 24 August and need to back in to school by Friday 28 August.

Warehouse Stationery - Support Your School

Please nominate our school when you purchase items at Warehouse Stationery. This gives the school bonus points that enable us to 'purchase' items for student use.

Board of Trustees' By-Election 2020

Nominations are invited for the election of one parent representative to the Board of Trustees.

A nomination form and a notice calling for nominations will be posted to all eligible voters this week. You can nominate another person to stand as a candidate, or you can nominate yourself. Both parts of the form must be signed. Additional nomination forms can be obtained from the school office.

Nominations close **at noon on Friday 18 September 2020** and may be accompanied by a signed candidate statement and photograph. The voting roll is open for inspection at the school and can be viewed during normal school hours. There will also be a list of candidates' names, as they come to hand, for inspection at the school office. Voting closes at **noon on Friday 9 October 2020**.

**Signed Amanda Beauchamp,
Returning Officer**



Daffodil Day - Friday 28 August

On Friday 28th of August we will be celebrating daffodil day. This event will raise money for the Cancer Society.



The Cancer Society provides free support and information, funds lifesaving cancer research and advocates health promotion initiatives to reduce the risk of cancer for future generations. The Cancer Society relies on schools like ours to continue to support them to provide free accommodation, nursing and psychology services for patients and their families.

On Friday 28th August please come to school with a gold coin donation and wear yellow or orange (to imitate a daffodil!).

We look forward to getting all 'Daffodilly' with you!
From your Student Council

Emergency Evacuation

National Shake Out Practise

New Zealand National Emergency Management Agency promotes a National Shake Out Practise every year. This year it is taking place at 9:30am on Thursday 15 October. Wherever you are during New Zealand Shake Out, you can take part in the drill. Just Drop, Cover and Hold for up to one minute, and if you are in a coastal area they suggest also practising your tsunami hīkoi.



**National Emergency
Management Agency**
Te Rākau Whakamarumaru

Bellevue Annual Whole School Evacuation + Reunification practice

This year this practice will take place on **Tuesday 10 November**. On this day there is an 'emergency scenario' which is announced through a text message to you during the day. You will be alerted so that you or one of your Emergency Release Adults comes to collect your child/ren from school.

Hub 5 - Celebrating our Passion Projects

Since the middle of Term 2, Hub 5 students have been busy wondering, researching, connecting with experts, gathering information and putting together presentations of their learning for their Passion Projects.

On Tuesday they were VERY excited to share these with our entire school community and then, after school with Hub 5 families. We had an excellent turnout and the students really appreciated the interest all our 'audience' members showed not just in the projects themselves but in the valuable learning process that sits behind these.

It was a fantastic celebration and Hub 5 students and teachers would like to thank everyone involved in both the preparation process and the wonderful celebration yesterday!



Sports News

2020 Wellington and Kapi Mana Primary and Intermediate Schools tournament (Tennis):

Tuesday 15 September for girls

Wednesday 16/Thursday 17 September for boys.

Venue: Renouf Tennis Centre, 60 Brooklyn Road, Wellington.

As this is an outside event parents/whānau are responsible for transporting their child to and from the tournament and for covering the registration costs. Registration fees are \$20 which will need to be made into the school account as part of the registration process.

If you are interested in entering your child please email Miss George (jenny@bellevue-newlands.school.nz) by Friday 21 August.



Miniball:

We are looking for parents to manage the Bellevue miniball teams for Term 4. The role includes signing the team up, collecting fees from players, informing players of game changes and emailing the school the results of the game each week.

If you are interested please email Miss George (jenny@bellevue-newlands.school.nz).



Sport Practices at Level 2:

Currently in Level 2 the main priority for the school and myself as the sport coordinator is keeping our students, families and whanau safe and in line with Level 2 guidelines.

I have been in touch with the Ministry of Health and they have advised that if we can not guarantee the students will at all times be 1m apart (to avoid the moist breath zone) that we should not go ahead with sport practices. Also as the guidelines indicate we should avoid having non essential adults on site. The Ministry also advised the information on the COVID-19 website on sport and recreation is for mass gatherings and not for school practice programmes.

With all the information and advice given to me directly from the Ministry of Health, Bellevue at Level 2 will not be holding after school sport practices on site.

Warm regards,

Jenny George

Community Notices

Community notices are included as space allows, and are limited to no more than 100 words. Every effort is made to present accurate information, however the Board does not accept responsibility for any inaccuracies. The Board is unable to accept responsibility for goods or services advertised.

Newlands Pasifika Festival:

Fakaalofa lahi atu, Bula Vinaka, Fakatalofa atu, Kia orana, Mālō e lelei, Mālō nī, Talofa lava, Tēnā koutou katoa and warm Pacific greetings!

If you are interested in attending the Pasifika festival you are invited to the annual Newlands/Paparangi Pasifika Festival on Thursday 10 September.

Key information:

- Doors open at 6:30pm with a 7:00pm start.
- The classroom next to the hall and the whare nui are used as changing rooms.
- This is a shared kai event, so please bring some food to share if you are attending so that there is plenty of kai to feed the troops. Trestle tables will be set up at the back of the hall for this.
- Pasifika leaders at Newlands College will MC the evening.

Performance order starting at 7:00pm:

1. Newlands Primary
2. Newlands Intermediate
3. Newlands College/Onslow College

Please be in touch directly with Lucia if you have any questions - lwaiker@newlands.school.nz.

Wellington Phoenix Holiday Programme is back for October!

The Wellington Phoenix FC are hosting a 2-day training programme during the upcoming October school holidays. This is your child's opportunity to play their favourite sport, show off all the skills they have been working on during the season and make new friends!

Monday 5 – Tuesday 6 October 2020, 9am – 3pm Fraser Park Sportville, Lower Hutt

Suitable for ages 7-12 and all physical impairments & abilities

Prices (for a 2-day programme)

Full Members \$120

Complementary Members & Non-Members \$150

What's Included in the two day programme:

Coaching from New Zealand Licenced Coaches

Official Phoenix branded apparel

Skills, drills and loads of fun!



Register now on our website - <https://www.wellingtonphoenix.com/holiday-programmes-1>

COVID-19 Update

The Alert Level for our Greater Wellington Region continues to be **Level 2**.

Level 2 messages are:

- Stay home if sick
- Wash hands
- Cough and Sneeze into arm or tissue
- Record who is on site
- Stay home if awaiting Covid testing results
- Use the Government Covid Tracker App to record your own personal movements
- Wash hands

The Ministry of Education has also sent through the following information:

All of New Zealand excluding Auckland region – At Alert Level 2

- It is safe for all students, children and staff to attend school and early learning. There will be appropriate precautions in place.
- Children and staff who are at higher-risk of severe illness are encouraged to take additional precautions when leaving home.
- Please be alert to illness and ask anyone who is presenting as unwell to go home, or ask parents and caregivers to come and pick the child up.
- Messaging about good hand hygiene and cough and sneeze etiquette to be reinforced.
- Soap and water is very appropriate for washing hands, particularly if hand sanitiser stocks are low.
- For schools, children, young people and staff should be far enough away from each other so that they are not breathing on or touching each other, coupled with good hygiene practices and regular cleaning of commonly touched surfaces. There does not need to be a specific measurement but where practicable and reasonable 1 metre can be used as a guide, particularly between adults.
- Physical distancing of 2 metres is recommended for parents and caregivers, from people they don't know (to align with public health measures outside the school grounds).
- Please use the QR code posters for the NZ COVID Tracer App.

Masks

Masks are not required at schools and early learning services at Alert levels 2 and 3.

For our school this means from tomorrow

- Only essential visitors will be admitted to the school grounds. These visitors will need to ring the school office from the school gate and sign the contact register if they come on to the school grounds.
- Parents and caregivers are asked to adhere to the 2m social distancing when dropping off or picking up students outside the school gates.
- Drop off/students walk to school between 8:30am – 9:00am. **No children to arrive on the school grounds before 8:30am.**
- Students need to walk to or from school (they may be dropped a short distance from the school to walk into the gates) or be dropped at the school gates. Pickups need to be from the school carpark area (as per when we returned to school at Level 2 in May).
- We ask that no non-essential people come through the school gates onto the school site, and that you adhere to the 2 m distancing advice from the Ministry of Health and Ministry of Education as much as possible outside the school grounds.
- There will be staff members available to meet and greet your child at the gate to accompany them to class if required.
- **At the end of the day** your child will need to walk directly home or be collected from the school carpark area (as per Level 2 when they returned to school after Level 3 last time).
- **Students Staggered pick up/leaving times are:**
 - Hub 1 - 2:45pm
 - Hub 2 - 2:45pm
 - Hub 3 - 2:50pm
 - Hub 4 - 3:00pm
 - Hub 5 – 3: 00pm
- Please wait in the carpark area until your child is released to you. They will meet you in the school carpark.
- If you need to enter the school grounds at any time you will need to ring the school from the carpark gate, and sign the Contact Tracing Register as you enter the school site.
- Please note that there will be no parent help/volunteers at Level 2.

