



# Weekly Newsletter

2 December 2020

He taonga rongonui te aroha ki te tangata = Goodwill towards others is a precious treasure

Term 4 - Issue 8

## Important Dates

Friday 4 December	Pack the Bus collects donated goods
Friday 4 December	Road Patrollers trip to Tawa Pool (morning)
Friday 4 December	FUNdraiser's Pizza Lunch
Wednesday 9 December	End of Year written reports come home
Friday 11 December	Helpers Morning Tea - 10:30 - 11:30am
Friday 11 December	Presentations Assembly - 2:15pm
Friday 11 December	Bake Sale and Sausage Sizzle - 3:00 - 4:00pm
Monday 14 December	Year 6 Leavers Dinner and Disco
Tuesday 15 December	Final assembly - 11:15am Last Day of School - 12:30pm finish

## From The Principal's Desk



Kia ora, Nameste, Talofa, Konnichiwa, Guten Tag, Gidday, Vannakkam, ni Hao, Kia orana, Hola, Salam, As-salaamu 'alaykum Sa wat dee kha, Dia Dhuit, Goeie Dag, Bonjour, Hello, (please let us know the greeting in your language if it is not here)

What an amazing group of students and adults who worked so collaboratively and had a great time together at Brookfield Camp last week. It was wonderful to see students and adults rising to the challenges of activities, the weather, cohabitating and having fun in an outdoor, digital-free environment. Thank you to our Year 5 and Year 6 students, their teachers and a truly amazing group of parent helpers who proved that the Bellevue School values of manaakitanga/empathy, whakaute/respect, māia/confidence, takohanga/responsibility and manawaroa/resilience are alive and well in our learning community. There were so many examples of students and adults on camp demonstrating these values. Tino pai rawa koutou - what a great highlight to 2020!

Please note that the 2020 Community Survey closes at 8:00pm this Friday. Although it is a busy time of year, we are keen to hear from as many of our families/whānau as possible. We hope that you can make some time to let us know your thoughts through this survey to assist us with Strategic Planning for 2021—2023. Please note that there is a prize draw at the final assembly for those who participate.

A big thank you to those who have already donated to Pack the Bus or Newlands Community house to support families less fortunate this Christmas. There are two more days until the bus arrives to collect these donated goods/presents, so if you would like to contribute there is still time.

Have a great week,

Nga mihi nui  
Karen and the Bellevue School team



### Final Assembly

Please join us to sing some festive songs - also to farewell our Year 6 students and staff that are leaving.

Please start collecting books for the 2021 Bellevue School Book Fair. These can be dropped into the school next year.

Please do not send them along now, as the storage area is not available until next year.



## Term 4 Assembly Dates

Friday 11 December	Presentations - 2:10pm
Tues 15 December	Final Assembly - 11:30am



Umbrella can't stop the rain but can make us stand in rain.  
Confidence may not bring success but gives us power to face any challenge in life.

Māia/Confidence is about having faith that we can do what is required. When we practice confidence, we are not held back by fears or doubts.

This umbrella quote encourages us to accept that (like the rain) we cannot stop anxieties and challenges. However māia (like an umbrella) helps empower us to face these (stand in the rain), to give things our best try, to put in the mahi and persist to learn how to do new things.

Practising māia, even if we are anxious, scared or nervous, helps us to nurture our confidence. 'Fake it until you make it' is quite apt when considering how best to develop the skills to build confidence.

Having faith that we can do it (even though we can not quite do it yet) helps us to tackle situations or things that we find more challenging. As we practice being confident we are also growing confidence in ourselves and our abilities.

Thank you for affirming child/ren when they demonstrate māia. With encouragement and practise, our young learners will become stronger at working through challenges to do their best in any situation.



## Kupu Hou (new word)

As you practise this weeks word, remember that each time we use te reo we contribute to its revival.

**whakamārama(tia)** = to explain  
pronunciation = far-car-mar-ra-ma (teh-ah)



E *whakamārama* ana te kaiako i te mahi ki ngā tamariki.  
The teacher is *explaining* the work to the children.

Kua *whakamāramatia* te mahi e te kaiako ki ngā tamariki.  
The work has been *explained* to the children by the teacher.

## Library Donations

In previous years, some families of Year 6 leavers, and others leaving Bellevue School, have wished to mark their time here by donating a book to the library.



We are holding a number of fiction, non-fiction and picture books suitable for a wide range of ages and interests. We make these available for donation at about half the retail price. The cost to donors ranges from about \$5.00 - \$20.00.

A library donation plate showing the name(s) of the donor will be placed in front of the book which will be available for borrowing by the donor after cataloguing and covering.

If you wish to make a donation to the library in this way, the books may be viewed at the school office from Tuesday 17 November.

## Summer Borrowing

### WANT TO READ IN THE HOLIDAYS?

**TAKE HOME A BAG OF UP TO 10 BOOKS TO READ OVER SUMMER!**

Visit Sarah in the library and collect a permission form to take a bag of books home for the summer.

To qualify you must be returning to Bellevue School in 2021, and have no outstanding books on issue.



## Library Open

The library will be open for families to collect their books for Summer reading at these times:

**Thursday 10 December 3pm - 4pm**

**Friday 11 December 3pm - 4pm**

**Monday 14 December 3pm - 4pm**

Mere Kirihiemete. Happy holidaying.

Sarah



## Library Books due back

Reminder that **ALL library books are due back by Wednesday 9 December.**

This is particularly important for Year 6 students who are not returning next year.



## Thank you

### Special thanks to...

Niamh O, Leon D, Jennifer N, Nick M and Karen H for covering Road Patrol duties while Year 5 and Year 6 students were at camp last week.

The amazing Hub 5 teachers for organising and holding such a successful camp, also to the parent helpers who worked so hard at camp and the students who did lots of learning and growing in confidence. Kia ora koutou.

THANKYOU!

## Pizza Lunch

The fundraising Pizza lunch is on **this Friday** (4 December).

Please note: no late orders can be accepted as all the processing has been completed.



## BELL Home Learning Challenge

Successful Bell Challenge students will receive their awards at the presentation assembly on Friday (11 December).



## Term Dates 2021

### Term Dates 2021:

(coordinated with four local Newlands Primary Schools)

### Before Term Starts:

*Includes:-*

Thurs/Friday 28 and 29 January - Teacher Only Days

**Tuesday 2 February** - Strengthening Families/Whānau meetings

### Term 1:

**Wednesday 3 February – Friday 16 April**

*Includes:-*

Waitangi Day Observance - Monday 8 February

Easter Friday 2 - Tuesday 6 April

### Term 2:

**Monday 3 May – Friday 9 July**

*Includes:-*

Teacher Only Day – Friday 4 June

Queens Birthday – Monday 7 June

### Term 3:

**Monday 26 July – Friday 1 October**

### Term 4:

**Monday 18 October – Wednesday 15 December**

*Includes:-*

Teacher Only Day – Friday 22 October

Labour Day – Monday 25 October



## Community Survey

The Bellevue community survey is now available. This is designed to get feedback from you to assist the Board in preparing the Strategic Plan for the next three years. Please follow this link to complete it and follow the link within the survey to record your child's details to go into the prize draw for a \$50 Prezzy Card.

<https://forms.gle/rH1kxQPpRpaapFsb9> or [https://docs.google.com/forms/d/e/1FAIpQLScBuAnFk7kcooXCLJQTTqgSp5F4401pJfremr1ar15eGNSGQQ/viewform?usp=sf\\_link](https://docs.google.com/forms/d/e/1FAIpQLScBuAnFk7kcooXCLJQTTqgSp5F4401pJfremr1ar15eGNSGQQ/viewform?usp=sf_link)

Please note this survey **closes at 8:00pm this Friday (4 December)**. **Please also note that the word limit for the written responses has been increased — thank you to the kind parent who let us know about this error. You are able to return to the survey to edit your responses should you wish to.**

The survey is designed to explore how well our school is doing in the following areas:-

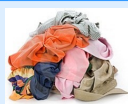
- School Life/Well-being
- Teaching and Learning/Curriculum
- Communication/Reporting to Parents
- General

We encourage all of you to complete the survey and we look forward to all the great feedback you provide to help us with setting the strategic direction for Bellevue.

Ka kite ano

Bellevue Board

## Lost Property



At the end of each term we endeavour to reunite families with items that collect in our 'Lost Property'.

If you are missing items, they may well have ended up in this collection.

We are hoping to have the items on display in an outside area following the presentation assembly and while the Bake Sale is on. Also the remaining items will be on display on the last day of term.

Please note that following this any unclaimed items are donated to a charity.

## School Website

Keeping a school website current is a major undertaking so the Website Management Team is beginning to modernise and improve the functionality of the school website.

Please send any suggestions and recommendations for modernising our website and making it more user friendly to the following address for the Website Management Team to consider - [webadmin@bellevue-newlands.school.nz](mailto:webadmin@bellevue-newlands.school.nz)



## Wellington North Primary School Citizenship



On Friday representatives from all Northern Zone schools attended a unique celebration where a student from each school was presented with a Citizenship Award by the Mayor Andy Foster on behalf of the Wellington City Council. It was a special event where students were acknowledged for the amazing things they have done within their schools and communities. Leo Sargeant was the worthy recipient of this Citizenship Award from Bellevue School because of what he brings to our school community.

This award acknowledges Leo as a confident, conscientious young man with an excellent sense of humour and a willingness to get things done. He consistently demonstrates a positive, problem solving approach; along with enthusiasm, curiosity and a passion for learning. Leo loves a challenge, gives everything a try, shows initiative and works to extend himself. He is considerate, polite, respectful of others and supports other students in their learning.

Leo participates to improve our learning community by 'giving back' in roles such as Road Patrol, Student Councillor (for the past two years) and confidently delivering whaikorero as part of our Kapa Haka group. He is a living example of kaitiakitanga and the Bellevue School values of

empathy, respect, reliability, resilience and confidence. Congratulations Leo.

Look out for the billboard around the Newlands area with the Community Award winners featured on this, also the Bellevue School Community shield which is in the office foyer.



## Helpers Morning Tea

The staff and school welcome all our helpers in 2020 to a special morning tea to say thank you. An invite has been emailed to parents/whanau, agencies and outside community members who have supported our students, staff and school during the year.

If you have helped out in any way and not received this personal invite, please accept this as your invite and RSVP to the school office to let us know if you are attending the Helpers' Morning Tea on Friday 11 December 10:30 - 11:30 am in the school hall. Kia ora koutou.





## Celebration Heroes

Congratulations to the following students who were acknowledged in last week's assembly for demonstrating **Māia or Confidence** at Bellevue School:

**Hub 1:** Joel Ahmu, Amy Wang and Camilla Daza

**Hub 2:** Nithika Madhan and Ishika Ratnam

**Hub 3:** Vivaan Chaturvedi, Aurora McClelland, Sebastian Barrett, Zachary Bartram, Liberty Puepue and Ananya Kamisetty

**All Hub 3** for a confident presentation at their assembly this week

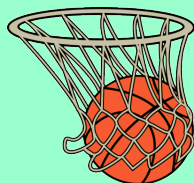
**Hub 4:** Leo Riedger, Matteo Daniels, Shiv Chauhan, Pippa Holden, Savana Santosh and Lily-Mai Bai



## Sports News

### Miniball Results:

Hurricanes won 50-27, POD: Nicola  
Lightning lost 27-31, POD: Mason  
Thunder lost 18-22, POD: Danielle  
Storm won 40-28, POD: Lilian



## Enrolment Information - Zoning

### Important information about the adoption of the enrolment scheme (zone)

If you have pre-schoolers at home that you are planning to enrol at Bellevue School in the future, here are a few important things to know and put into action:

**If you are living outside of the Bellevue School enrolment zone, then your pre-schooler(s) will need to be processed as an out of zone application.** Please let us know, if you haven't already, of any future enrolments at Bellevue School from your family. It helps greatly with our planning to know well in advance. And if we know then we can also prompt you as to when you need to get your out of zone application in.

**It is very important that out of zone applications are received by the application deadline. The next round deadline is 9:00am Friday 29 May 2021, for enrolment from Saturday 10 July 2021 to 15 December 2021.** We cannot accept any out of zone applications if they are not received by the deadline advertised for the enrolment period your child is due to start school in. The deadline can sometimes be up to six months prior to your child actually starting school.

**Even if your pre-schooler(s) are in zone, please get your paperwork in to us as soon as possible to enable us to plan ahead.** We need this information to be able to work out how many out of zone applications we can accept in each enrolment period.

If you have any questions or are unsure about anything, please call on (04) 478 7037 or come into the school office and talk to Amanda.

## Pack the Bus *and* Newlands Community House

Our Student Council invites you to think of others less fortunate at Christmas by joining with **Wellington City Mission OR Newlands Community House** to provide gifts. **Please note that any gifts without labels will be distributed between the two.**

The bus is coming to Bellevue this Friday (4 December) which means only a few days left to organise a little something for another child/family at Christmas. Newlands Community House gifts will also be passed to them at the end of this week.



Both charities have asked for new toys, games, books, board games, art equipment, vouchers, cans of food, non-perishable or festive food. If you wish your child to place the item your family/they have donated on the bus, please put their name and class number on this gift but please do not wrap the gift (a request from the organisers).

**The Christmas tree is in the foyer so please place any gifts you are donating or non-perishable food and festive food under the tree with a label as to which community group you would like to donate to, and your child's name if they wish to place their own gift onto the bus.**

Thank you in advance from the School Council, The Breeze and The City Mission, also Newlands Community House for thinking of others and practising empathy, aroha and compassion for those less fortunate.



## Road Patrols for 2021

For 2021, we require support for the new Road Patrol teams in the mornings from 8.25 - 9.00 am, and/or afternoons from 2.50pm - 3.15pm.

If you are available any day of the week at these times and would be willing to help our student leaders keep our tamariki safe as they journey to and from school next year, please get in touch in Term 4.

Please contact Deeann Daniels by giving the office a call or at:

[deeann@bellevue-newlands.school.nz](mailto:deeann@bellevue-newlands.school.nz)

We are also putting together a list of parents who can cover if a parent/adult is unable to do their duty due to illness or unexpected circumstances next year. Please let Deeann know if you can be one of these emergency back up people to cover now and again should the situation arise.



## Community Notices

*Community notices are included as space allows, and are limited to no more than 100 words. Every effort is made to present accurate information, however the Board does not accept responsibility for any inaccuracies. The Board is unable to accept responsibility for goods or services advertised.*

### Y6 Leavers - Y7-9 Students - Ka Pai Klub

We have been operating Kapa Kidz for 18 years at Bellevue School. As the demand from the community for an after school programme for Intermediate students was required, we opened Ka Pai Klub in 2019. The venue is 5 minutes walk from the Intermediate (Christadelphian Church, Helston Rd). If you require after school care for your child/ren from Term 1 2021, we are able to help. All enquiries to Linda Robinson 021 409641 or [linda@ka-pai-klub.co.nz](mailto:linda@ka-pai-klub.co.nz)



### Kapai Kidz - Tuesday 15 November

We will be open from 12.30pm due to the early closure of the school term. Call Linda 021 409641 or email [linda@kapaikidz.co.nz](mailto:linda@kapaikidz.co.nz)

### Kapai Kidz - HOLIDAY PROGRAMME

We will be open from 16-18 December, then 18 January - 02 February 2021. Enrol via our website [www.kapaikidz.co.nz](http://www.kapaikidz.co.nz) or call Linda Robinson 021 409641.

**Johnsonville  
Charitable Trust Lions  
Christmas Parade**

**Saturday  
5 December 11.00am**

DEPARTS FROM DR TAYLOR TERRACE

THEN JOIN US FOR A MEET AND GREET  
of all your favourite parade characters  
and further entertainment at nearby  
Johnsonville Memorial Park.

Kindly supported by





BELLEVUE SCHOOL'S FAMOUS

## *Festive Bake Sale and Sasage Sizzle*

*11 Dec 3-4pm*

Dig out your favourite recipe and  
donate a wee plate.

Want to run a stall or help?  
Contact us at [fundraisers@bellevue-  
newlands.school.nz](mailto:fundraisers@bellevue-newlands.school.nz)

**PIZZA LUNCH  
4 DEC**

Order forms  
due 20 Nov.

## 2021 Mega Book Sale

BY BELLEVUE FUNDRAISERS

**HAVING A CLEAN OUT?**

**SAVE YOUR BOOKS FOR OUR  
BOOK FAIR IN JUNE!**

**SUMMER ADVENTURES?  
SUPPORT BELLEVUE AND  
SAVE MONEY WITH AN  
ENTERTAINMENT  
MEMBERSHIP.**

[ENTERTAINMENTBOOK.CO.NZ/](http://ENTERTAINMENTBOOK.CO.NZ/)  
[ORDERBOOKS/1G04109](http://ORDERBOOKS/1G04109)